

Datasheet for ABIN5518823
anti-CYP2D6 antibody (C-Term)

5 Images

[Go to Product page](#)

Overview

Quantity:	100 µg
Target:	CYP2D6
Binding Specificity:	AA 315-347, C-Term
Reactivity:	Human, Mouse, Rat
Host:	Rabbit
Clonality:	Polyclonal
Application:	Western Blotting (WB), Immunohistochemistry (Paraffin-embedded Sections) (IHC (p))

Product Details

Purpose:	Rabbit IgG polyclonal antibody for Cytochrome P450 2D6(CYP2D6) detection. Tested with WB, IHC-P in Human,Mouse,Rat.
Immunogen:	A synthetic peptide corresponding to a sequence at the C-terminus of human Cytochrome P450 2D6 (315-347aa AWGLLLMLHPDVQRRVQQEIDDVIGQVRRPEM).
Sequence:	AWGLLLMLH PDVQRRVQQE IDDVIGQVRR PEM
Isotype:	IgG
Cross-Reactivity (Details):	No cross reactivity with other proteins.
Characteristics:	<p>Rabbit IgG polyclonal antibody for Cytochrome P450 2D6(CYP2D6) detection. Tested with WB, IHC-P in Human,Mouse,Rat.</p> <p>Gene Name: cytochrome P450, family 2, subfamily D, polypeptide 6</p> <p>Protein Name: Cytochrome P450 2D6</p>
Purification:	Immunogen affinity purified.

Target Details

Target:	CYP2D6
Alternative Name:	CYP2D6 (CYP2D6 Products)
Background:	<p>Cytochrome P450 2D6 (CYP2D6) is one of the most important enzymes involved in the metabolism of xenobiotics in the body. It is a member of Cytochrome P450, family 2, subfamily D, polypeptide 6. This gene is mapped to chromosome 22q13.1. It has got 497 amino acid proteins which shares 73 % sequence identity with the rat protein. CYP2D6 is highly expressed in human liver and it is the major isozyme involved in the formation of N-hydroxyprocainamide, a metabolite potentially involved in the drug-induced lupus syndrome observed with procainamide.</p> <p>Synonyms: Cytochrome P450 2D6 1.14.14.1 CYP11D6 Cytochrome P450-DB1 Debrisoquine 4-hydroxylase CYP2D6 CYP2DL1 P10635</p>
Gene ID:	1565
UniProt:	P10635

Application Details

Application Notes:	<p>WB: Concentration: 0.1-0.5 µg/mL, Tested Species: Mouse, Rat, Predicted Species: Human</p> <p>IHC-P: Concentration: 0.5-1 µg/mL, Tested Species: Human, Mouse, Rat, Epitope Retrieval by Heat: Boiling the paraffin sections in 10 mM citrate buffer, pH 6.0, for 20 mins is required for the staining of formalin/paraffin sections.</p> <p>Notes: Tested Species: Species with positive results. Predicted Species: Species predicted to be fit for the product based on sequence similarities. Other applications have not been tested.</p> <p>Optimal dilutions should be determined by end users.</p>
Comment:	Antibody can be supported by chemiluminescence kit ABIN921124 in WB, supported by ABIN921231 in IHC(P).
Restrictions:	For Research Use only

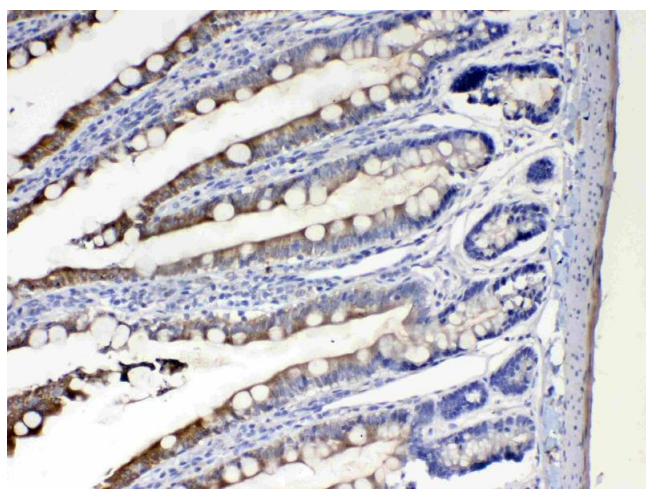
Handling

Format:	Lyophilized
Reconstitution:	Add 0.2 mL of distilled water will yield a concentration of 500 µg/mL.
Concentration:	500 µg/mL
Buffer:	Each vial contains 5 mg BSA, 0.9 mg NaCl, 0.2 mg Na2HPO4, 0.05 mg Sodium azide.

Handling

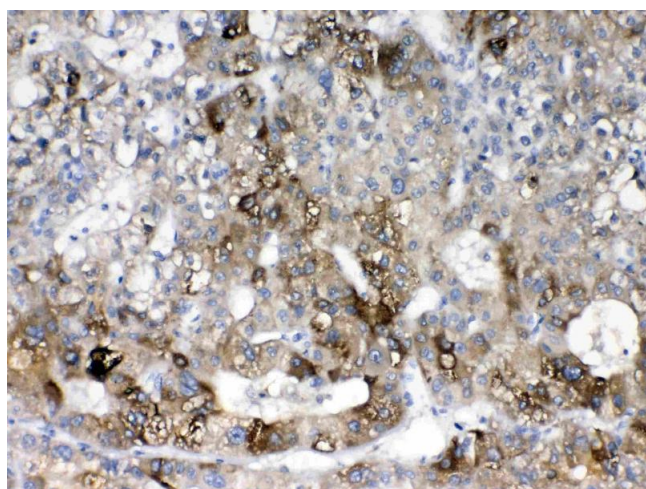
Preservative:	Sodium azide
Precaution of Use:	This product contains Sodium azide: a POISONOUS AND HAZARDOUS SUBSTANCE which should be handled by trained staff only.
Storage:	4 °C,-20 °C
Storage Comment:	At -20°C for one year. After reconstitution, at 4°C for one month. It can also be aliquotted and stored frozen at -20 °C for a longer time. Avoid repeated freezing and thawing.

Images



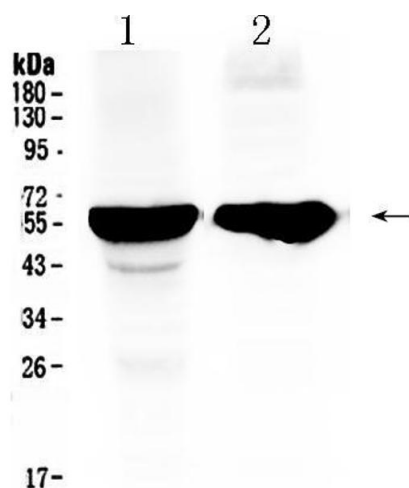
Immunohistochemistry

Image 1. IHC analysis of Cytochrome P450 2D6 using anti-Cytochrome P450 2D6 antibody . Cytochrome P450 2D6 was detected in paraffin-embedded section of rat intestine tissues. Heat mediated antigen retrieval was performed in citrate buffer (pH6, epitope retrieval solution) for 20 mins. The tissue section was blocked with 10% goat serum. The tissue section was then incubated with 1µg/ml rabbit anti-Cytochrome P450 2D6 Antibody overnight at 4°C. Biotinylated goat anti-rabbit IgG was used as secondary antibody and incubated for 30 minutes at 37°C. The tissue section was developed using Streptavidin-Biotin-Complex (SABC)(Catalog # SA1022) with DAB as the chromogen.



Immunohistochemistry

Image 2. IHC analysis of Cytochrome P450 2D6 using anti-Cytochrome P450 2D6 antibody . Cytochrome P450 2D6 was detected in paraffin-embedded section of human liver cancer tissues. Heat mediated antigen retrieval was performed in citrate buffer (pH6, epitope retrieval solution) for 20 mins. The tissue section was blocked with 10% goat serum. The tissue section was then incubated with 1µg/ml rabbit anti- Cytochrome P450 2D6 Antibody overnight at 4°C. Biotinylated goat anti-rabbit IgG was used as



secondary antibody and incubated for 30 minutes at 37°C. The tissue section was developed using Streptavidin-Biotin-Complex (SABC)(Catalog # SA1022) with DAB as the chromogen.

Western Blotting

Image 3. Western blot analysis of Cytochrome P450 2D6 using anti- Cytochrome P450 2D6 antibody . Electrophoresis was performed on a 5-20% SDS-PAGE gel at 70V (Stacking gel) / 90V (Resolving gel) for 2-3 hours. The sample well of each Lane was loaded with 50ug of sample under reducing conditions. Lane 1: rat liver tissue lysates, Lane 2: mouse liver tissue lysates. After Electrophoresis, proteins were transferred to a Nitrocellulose membrane at 150mA for 50-90 minutes. Blocked the membrane with 5% Non-fat Milk/TBS for 1.5 hour at RT. The membrane was incubated with rabbit anti- Cytochrome P450 2D6 antigen affinity purified polyclonal antibody (Catalog #) at 0.5 µg/mL overnight at 4°C, then washed with TBS-0.1%Tween 3 times with 5 minutes each and probed with a goat anti-rabbit IgG-HRP secondary antibody at a dilution of 1:10000 for 1.5 hour at RT. The signal is developed using an Enhanced Chemiluminescent detection (ECL) kit (Catalog # EK1002) with Tanon 5200 system. A specific band was detected for Cytochrome P450 2D6 at approximately 56KD. The expected band size for Cytochrome P450 2D6 is at 56KD.

Please check the [product details page](#) for more images. Overall 5 images are available for ABIN5518823.