

Datasheet for ABIN5518831  
**anti-ETS1 antibody (N-Term)**



[Go to Product page](#)

1 Image

1 Publication

## Overview

Quantity:	100 µg
Target:	ETS1
Binding Specificity:	AA 67-98, N-Term
Reactivity:	Human, Mouse
Host:	Rabbit
Clonality:	Polyclonal
Conjugate:	This ETS1 antibody is un-conjugated
Application:	Western Blotting (WB)

## Product Details

Purpose:	Anti-ETS1 Antibody Picoband®
Immunogen:	A synthetic peptide corresponding to a sequence at the N-terminus of human ETS1, identical to the related mouse and rat sequences.
Sequence:	KDPRQWTETH VRDWVMWAVN EFSLKGVDFQ KF
Isotype:	IgG
Cross-Reactivity (Details):	No cross-reactivity with other proteins.
Characteristics:	Anti-ETS1 Antibody Picoband® (ABIN5518831). Tested in WB applications. This antibody reacts with Human, Mouse. The brand Picoband indicates this is a premium antibody that guarantees superior quality, high affinity, and strong signals with minimal background in Western blot applications. Only our best-performing antibodies are designated as Picoband, ensuring unmatched performance.

## Product Details

Purification: Immunogen affinity purified.

## Target Details

Target: ETS1

Alternative Name: ETS1 ([ETS1 Products](#))

Background: Synonyms: Protein C-ets-1,p54,ETS1,EWSR2,  
Tissue Specificity: Highly expressed within lymphoid cells. Isoforms c-ETS-1A and Ets-1 p27 are both detected in all fetal tissues tested, but vary with tissue type in adult tissues. None is detected in brain or kidney. .  
Background: Protein C-ets-1 is a protein that in humans is encoded by the ETS1 gene. It is mapped to 11q24.3. This gene encodes a member of the ETS family of transcription factors, which are defined by the presence of a conserved ETS DNA-binding domain that recognizes the core consensus DNA sequence GGAA/T in target genes. These proteins function either as transcriptional activators or repressors of numerous genes, and are involved in stem cell development, cell senescence and death, and tumorigenesis.

Molecular Weight: 54 kDa

Gene ID: 2113

UniProt: [P14921](#)

## Application Details

Application Notes: Western blot, 0.1-0.5 µg/mL, Human, Mouse  
1. Delattre O, Zucman J, Plougastel B, Desmaze C, Melot T, Peter M, Kovar H, Joubert I, de Jong P, Rouleau G (Sep 1992). "Gene fusion with an ETS DNA-binding domain caused by chromosome translocation in human tumours". Nature. 359 (6391): 162-5. 2. Dwyer J, Li H, Xu D, Liu JP (Oct 2007). "Transcriptional regulation of telomerase activity: roles of the Ets transcription factor family". Annals of the New York Academy of Sciences. 1114 (1): 36-47.

Comment: Antibody can be supported by chemiluminescence kit ABIN921124 in WB.

Restrictions: For Research Use only

## Handling

Format: Lyophilized

Reconstitution: Add 0.2 mL of distilled water will yield a concentration of 500 µg/mL.

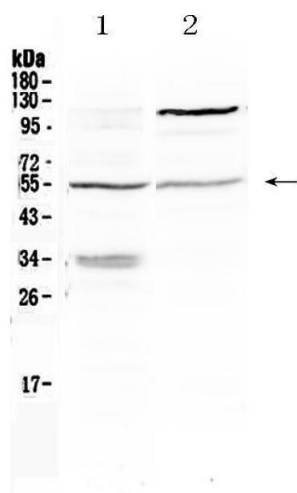
Handling

Concentration:	500 µg/mL
Buffer:	Each vial contains 4 mg Trehalose, 0.9 mg NaCl, 0.2 mg Na2HPO4, 0.05 mg Sodium azide.
Preservative:	Sodium azide
Precaution of Use:	This product contains Sodium azide: a POISONOUS AND HAZARDOUS SUBSTANCE which should be handled by trained staff only.
Storage:	4 °C,-20 °C
Storage Comment:	Store at -20°C for one year from date of receipt. After reconstitution, at 4°C for one month. It can also be aliquotted and stored frozen at -20°C for six months. Avoid repeated freeze-thaw cycles.

Publications

Product cited in:	Bian, Xu, Zhu, Pan, Liu, Luo, Wu, Li: "Luteolin Inhibits Ischemia/Reperfusion-Induced Myocardial Injury in Rats via Downregulation of microRNA-208b-3p." in: <b>PLoS ONE</b> , Vol. 10, Issue 12, pp. e0144877, (2016) ( <a href="#">PubMed</a> ).
-------------------	--

Images



**Western Blotting**

**Image 1.** Western blot analysis of ETS1 using anti- ETS1 antibody . Electrophoresis was performed on a 5-20% SDS- PAGE gel at 70V (Stacking gel) / 90V (Resolving gel) for 2-3 hours. The sample well of each Lane was loaded with 50ug of sample under reducing conditions. Lane 1: NIH3T3 whole Cell lysates, Lane 2: A375 whole cell lysates. After Electrophoresis, proteins were transferred to a Nitrocellulose membrane at 150mA for 50-90 minutes. Blocked the membrane with 5% Non-fat Milk/ TBS for 1.5 hour at RT. The membrane was incubated with rabbit anti-ETS1 antigen affinity purified polyclonal antibody (Catalog # ) at 0.5 µg/mL overnight at 4°C, then washed with TBS- 0.1%Tween 3 times with 5 minutes each and probed with a goat anti-rabbit IgG-HRP secondary antibody at a dilution of

1:10000 for 1.5 hour at RT. The signal is developed using an Enhanced Chemiluminescent detection (ECL) kit (Catalog # EK1002) with Tanon 5200 system. A specific band was detected for ETS1 at approximately 54KD. The expected band size for ETS1 is at 54KD.