

Datasheet for ABIN5518874
anti-TFPI2 antibody (N-Term)



[Go to Product page](#)

2 Images

Overview

Quantity:	100 µg
Target:	TFPI2
Binding Specificity:	AA 70-105, N-Term
Reactivity:	Human, Mouse
Host:	Rabbit
Clonality:	Polyclonal
Conjugate:	This TFPI2 antibody is un-conjugated
Application:	Western Blotting (WB), Immunohistochemistry (Paraffin-embedded Sections) (IHC (p))

Product Details

Purpose:	Rabbit IgG polyclonal antibody for Tissue factor pathway inhibitor 2(TFPI2) detection. Tested with WB, IHC-P in Human,Mouse.
Immunogen:	A synthetic peptide corresponding to a sequence at the N-terminus of human TFPI2 (70-105aa EGNANNFYTW EACDDACWRIEKVPKVCRLQVSVDDQ).
Sequence:	EGNANNFYTW EACDDACWRI EKVPKVCRLQ VSVDDQ
Isotype:	IgG
Cross-Reactivity (Details):	No cross reactivity with other proteins.
Characteristics:	<p>Rabbit IgG polyclonal antibody for Tissue factor pathway inhibitor 2(TFPI2) detection. Tested with WB, IHC-P in Human,Mouse.</p> <p>Gene Name: tissue factor pathway inhibitor 2</p> <p>Protein Name: Tissue factor pathway inhibitor 2</p>

Product Details

Purification: Immunogen affinity purified.

Target Details

Target: TFPI2

Alternative Name: TFPI2 ([TFPI2 Products](#))

Background: Tissue factor pathway inhibitor 2, also known as TFPI2, is a human gene which is located at 7q22. It is an important regulator of the extrinsic pathway of blood coagulation through its ability to inhibit factor Xa and factor VIIa-tissue factor activity. After a 22-residue signal peptide, the mature TFPI2 protein contains 213 amino acids with 18 cysteines and 2 canonical N-linked glycosylation sites. The purified recombinant TFPI2 strongly inhibited the amidolytic activities of trypsin and the factor VIIa-tissue factor complex. The latter inhibition was markedly enhanced in the presence of heparin. Mouse TFPI2 mRNA is highly expressed in developing mouse placenta, as in human. And there are also high transcript levels in adult mouse liver and kidney.

Synonyms: Tissue factor pathway inhibitor 2 | TFPI-2 | Placental protein 5 | PP5 | TFPI2 | TFPI 2 | P48307

Gene ID: 7980

UniProt: [P48307](#)

Application Details

Application Notes: WB: Concentration: 0.1-0.5 µg/mL, Tested Species: Human, Mouse
IHC-P: Concentration: 0.5-1 µg/mL, Tested Species: Human, Epitope Retrieval by Heat: Boiling the paraffin sections in 10 mM citrate buffer, pH 6.0, for 20 mins is required for the staining of formalin/paraffin sections.
Notes: Tested Species: Species with positive results. Other applications have not been tested. Optimal dilutions should be determined by end users.

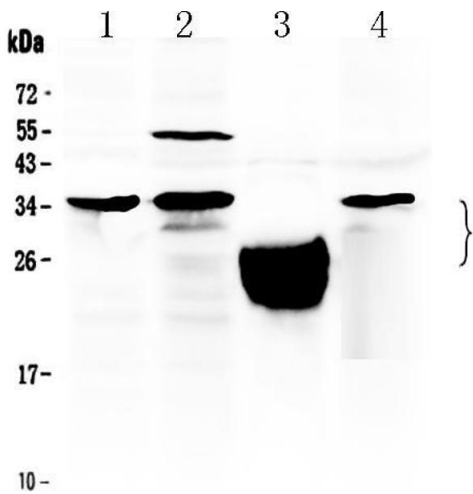
Comment: Antibody can be supported by chemiluminescence kit ABIN921124 in WB, supported by ABIN921231 in IHC(P).

Restrictions: For Research Use only

Handling

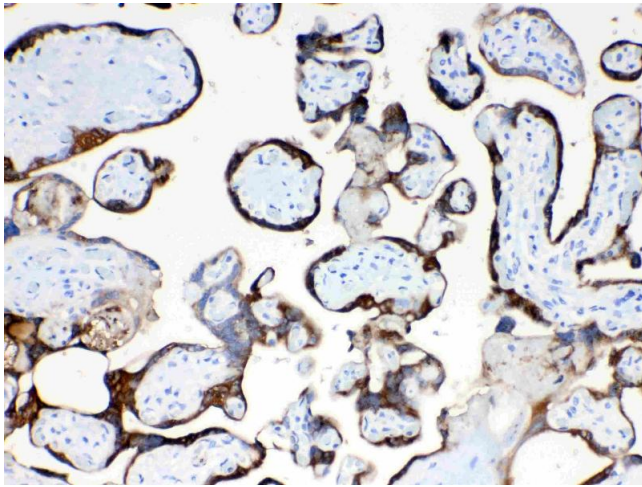
Format:	Lyophilized
Reconstitution:	Add 0.2 mL of distilled water will yield a concentration of 500 µg/mL.
Concentration:	500 µg/mL
Buffer:	Each vial contains 5 mg BSA, 0.9 mg NaCl, 0.2 mg Na2HPO4, 0.05 mg Sodium azide.
Preservative:	Sodium azide
Precaution of Use:	This product contains Sodium azide: a POISONOUS AND HAZARDOUS SUBSTANCE which should be handled by trained staff only.
Storage:	4 °C,-20 °C
Storage Comment:	At -20°C for one year. After reconstitution, at 4°C for one month. It can also be aliquotted and stored frozen at -20 °C for a longer time. Avoid repeated freezing and thawing.

Images



Western Blotting

Image 1. Western blot analysis of TFPI2 using anti- TFPI2 antibody . Electrophoresis was performed on a 5-20% SDS- PAGE gel at 70V (Stacking gel) / 90V (Resolving gel) for 2-3 hours. The sample well of each Lane was loaded with 50ug of sample under reducing conditions. Lane 1: mouse spleen tissue lysates, Lane 2: HELA whole Cell lysates, Lane 3: human placenta tissue lysates, Lane 4: MCF-7 whole cell lysates. After Electrophoresis, proteins were transferred to a Nitrocellulose membrane at 150mA for 50-90 minutes. Blocked the membrane with 5% Non-fat Milk/ TBS for 1.5 hour at RT. The membrane was incubated with rabbit anti- TFPI2 antigen affinity purified polyclonal antibody (Catalog #) at 0.5 µg/mL overnight at 4°C, then washed with TBS- 0.1%Tween 3 times with 5 minutes each and probed with a goat anti-rabbit IgG-HRP secondary antibody at a dilution of 1:10000 for 1.5 hour at RT. The signal is developed using an Enhanced Chemiluminescent detection (ECL) kit (Catalog # EK1002) with Tanon 5200 system. A specific band was



detected for TFPI2 at approximately 27KD, 35KD. The expected band size for TFPI2 is at 27KD.

Immunohistochemistry

Image 2. IHC analysis of TFPI2 using anti- TFPI2 antibody . TFPI2 was detected in paraffin-embedded section of human placenta tissues. Heat mediated antigen retrieval was performed in citrate buffer (pH6, epitope retrieval solution) for 20 mins. The tissue section was blocked with 10% goat serum. The tissue section was then incubated with 1µg/ml rabbit anti- TFPI2 Antibody overnight at 4°C. Biotinylated goat anti-rabbit IgG was used as secondary antibody and incubated for 30 minutes at 37°C. The tissue section was developed using Streptavidin-Biotin-Complex (SABC)(Catalog # SA1022) with DAB as the chromogen.