

Datasheet for ABIN5518882  
**anti-TMEM240 antibody (AA 1-173)**[Go to Product page](#)

## 1 Image

## Overview

Quantity:	100 µg
Target:	TMEM240
Binding Specificity:	AA 1-173
Reactivity:	Mouse, Rat, Human
Host:	Rabbit
Clonality:	Polyclonal
Conjugate:	This TMEM240 antibody is un-conjugated
Application:	Western Blotting (WB)

## Product Details

Purpose:	Rabbit IgG polyclonal antibody for Transmembrane protein 240(TMEM240) detection. Tested with WB in Human,Mouse,Rat.
Immunogen:	E.coli-derived human TMEM240 recombinant protein (Position: M1-L173). Human TMEM240 shares 97.7% amino acid (aa) sequence identity with mouse TMEM240.
Isotype:	IgG
Cross-Reactivity (Details):	No cross reactivity with other proteins.
Characteristics:	<p>Rabbit IgG polyclonal antibody for Transmembrane protein 240(TMEM240) detection. Tested with WB in Human,Mouse,Rat.</p> <p>Gene Name: transmembrane protein 240</p> <p>Protein Name: Transmembrane protein 240</p>
Purification:	Immunogen affinity purified.

## Target Details

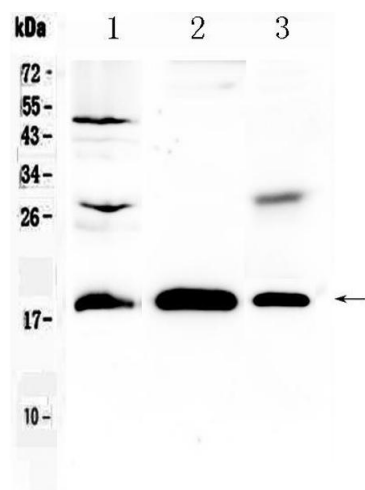
Target:	TMEM240
Alternative Name:	TMEM240 ( <a href="#">TMEM240 Products</a> )
Background:	<p>TMEM240 is a small, highly conserved transmembrane protein expressed in brain. The TMEM240 gene maps to chromosome 1p36.33. This gene encodes a transmembrane-domain containing protein found in the brain and cerebellum. Mutations in this gene result in spinocerebellar ataxia 21.</p> <p>Synonyms: C1orf70   SCA21   Q5SV17</p>
Gene ID:	339453

## Application Details

Application Notes:	<p>WB: Concentration: 0.1-0.5 µg/mL, Tested Species: Human, Mouse, Rat</p> <p>Notes: Tested Species: Species with positive results.</p> <p>Other applications have not been tested. Optimal dilutions should be determined by end users.</p>
Comment:	Antibody can be supported by chemiluminescence kit ABIN921124 in WB.
Restrictions:	For Research Use only

## Handling

Format:	Lyophilized
Reconstitution:	Add 0.2 mL of distilled water will yield a concentration of 500 µg/mL.
Concentration:	500 µg/mL
Buffer:	Each vial contains 5 mg BSA, 0.9 mg NaCl, 0.2 mg Na2HPO4, 0.05 mg Sodium azide.
Preservative:	Sodium azide
Precaution of Use:	This product contains Sodium azide: a POISONOUS AND HAZARDOUS SUBSTANCE which should be handled by trained staff only.
Storage:	4 °C,-20 °C
Storage Comment:	<p>At -20°C for one year. After reconstitution, at 4°C for one month.</p> <p>It can also be aliquotted and stored frozen at -20 °C for a longer time. Avoid repeated freezing and thawing.</p>



### Western Blotting

**Image 1.** Western blot analysis of TMEM240 using anti-TMEM240 antibody . Electrophoresis was performed on a 5-20% SDS-PAGE gel at 70V (Stacking gel) / 90V (Resolving gel) for 2-3 hours. The sample well of each Lane was loaded with 50ug of sample under reducing conditions. Lane 1: rat brain tissue lysates, Lane 2: NIH3T3 whole Cell lysates, Lane 3: COLO320 whole cell lysates. After Electrophoresis, proteins were transferred to a Nitrocellulose membrane at 150mA for 50-90 minutes. Blocked the membrane with 5% Non-fat Milk/ TBS for 1.5 hour at RT. The membrane was incubated with rabbit anti-TMEM240 antigen affinity purified polyclonal antibody (Catalog # ) at 0.5 µg/mL overnight at 4°C, then washed with TBS-0.1%Tween 3 times with 5 minutes each and probed with a goat anti-rabbit IgG-HRP secondary antibody at a dilution of 1:10000 for 1.5 hour at RT. The signal is developed using an Enhanced Chemiluminescent detection (ECL) kit (Catalog # EK1002) with Tanon 5200 system. A specific band was detected for TMEM240 at approximately 19KD. The expected band size for TMEM240 is at 19KD.