

Datasheet for ABIN5518903
anti-CTLA4 antibody (AA 36-161)[Go to Product page](#)

4 Images

Overview

Quantity:	100 µg
Target:	CTLA4
Binding Specificity:	AA 36-161
Reactivity:	Mouse, Rat
Host:	Rabbit
Clonality:	Polyclonal
Conjugate:	This CTLA4 antibody is un-conjugated
Application:	Western Blotting (WB), ELISA, Immunohistochemistry (Paraffin-embedded Sections) (IHC (p))

Product Details

Purpose:	Rabbit IgG polyclonal antibody for Cytotoxic T-lymphocyte protein 4(Ctla4) detection. Tested with WB, IHC-P, ELISA in Mouse,Rat.
Immunogen:	E. coli-derived mouse CTLA4 recombinant protein (Position: E36-D161). Mouse CTLA4 shares 67.5% amino acid (aa) sequence identity with human CTLA4.
Isotype:	IgG
Cross-Reactivity (Details):	No cross reactivity with other proteins.
Characteristics:	<p>Rabbit IgG polyclonal antibody for Cytotoxic T-lymphocyte protein 4(Ctla4) detection. Tested with WB, IHC-P, ELISA in Mouse,Rat.</p> <p>Gene Name: cytotoxic T-lymphocyte-associated protein 4</p> <p>Protein Name: Cytotoxic T-lymphocyte protein 4</p>
Purification:	Immunogen affinity purified.

Target Details

Target:	CTLA4
Alternative Name:	Ctla4 (CTLA4 Products)
Background:	<p>CTLA-4(Cytotoxic T-Lymphocyte Antigen 4), also known as CD152, is a protein receptor that down regulates the immune system. It is a member of the immunoglobulin superfamily, which is expressed on the surface of Helper T cells and transmits an inhibitory signal to T cells.</p> <p>CTLA4 is similar to the T-cell co-stimulatory protein, CD28, and both molecules bind to CD80 and CD86, also called B7-1 and B7-2 respectively, on antigen-presenting cells. CTLA4 transmits an inhibitory signal to T cells, whereas CD28 transmits a stimulatory signal. Blockade of CTLA4 expression in vitro augmented HIV-specific CD4-positive T-cell function.</p> <p>Synonyms: Cytotoxic T-lymphocyte protein 4, Cytotoxic T-lymphocyte-associated antigen 4, CTLA-4, CD152, Ctla4, Cd152</p>
Gene ID:	12477
UniProt:	P09793
Pathways:	Cancer Immune Checkpoints

Application Details

Application Notes:	<p>WB: Concentration: 0.1-0.5 µg/mL, Tested Species: Mouse</p> <p>IHC-P: Concentration: 0.5-1 µg/mL, Tested Species: Mouse, Rat, Epitope Retrieval by Heat: Boiling the paraffin sections in 10 mM citrate buffer, pH 6.0, for 20 mins is required for the staining of formalin/paraffin sections.</p> <p>ELISA: Concentration: 0.1-0.5 µg/mL, Tested Species: Mouse</p> <p>Notes: Tested Species: Species with positive results. Other applications have not been tested. Optimal dilutions should be determined by end users.</p>
Comment:	Boster recommends Enhanced Chemiluminescent Kit with anti-Rabbit IgG (ABIN921124) for Western blot, and HRP Conjugated anti-Rabbit IgG Super Vision Assay Kit (SV0002-1) for IHC(P).
Restrictions:	For Research Use only

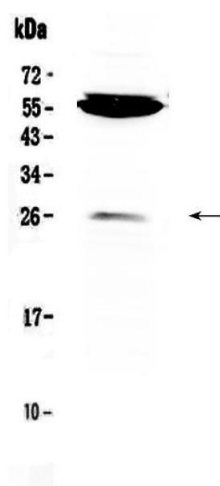
Handling

Format:	Lyophilized
---------	-------------

Handling

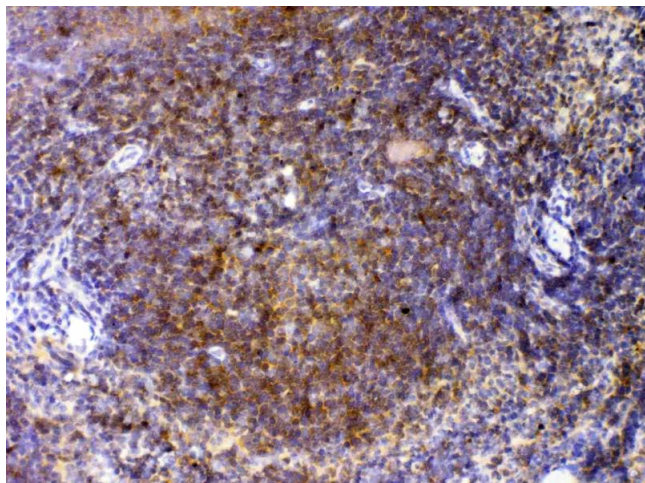
Reconstitution:	Add 0.2 mL of distilled water will yield a concentration of 500 µg/mL.
Concentration:	500 µg/mL
Buffer:	Each vial contains 5 mg BSA, 0.9 mg NaCl, 0.2 mg Na ₂ HPO ₄ , 0.05 mg Sodium azide.
Preservative:	Sodium azide
Precaution of Use:	This product contains Sodium azide: a POISONOUS AND HAZARDOUS SUBSTANCE which should be handled by trained staff only.
Storage:	4 °C,-20 °C
Storage Comment:	At -20°C for one year. After reconstitution, at 4°C for one month. It can also be aliquotted and stored frozen at -20 °C for a longer time. Avoid repeated freezing and thawing.

Images



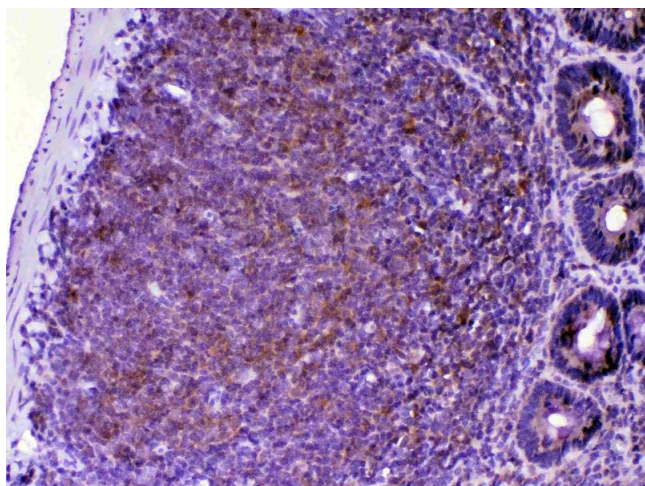
Western Blotting

Image 1. Western blot analysis of CTLA4 using anti-CTLA4 antibody . Electrophoresis was performed on a 5-20% SDS-PAGE gel at 70V (Stacking gel) / 90V (Resolving gel) for 2-3 hours. The sample well of each Lane was loaded with 50µg of sample under reducing conditions. Lane 1: mouse NIH3T3 whole Cell lysate. After Electrophoresis, proteins were transferred to a Nitrocellulose membrane at 150mA for 50-90 minutes. Blocked the membrane with 5% Non-fat Milk/ TBS for 1.5 hour at RT. The membrane was incubated with rabbit anti-CTLA4 antigen affinity purified polyclonal antibody (Catalog #) at 0.5 µg/mL overnight at 4°C, then washed with TBS-0.1%Tween 3 times with 5 minutes each and probed with a goat anti-rabbit IgG-HRP secondary antibody at a dilution of 1:10000 for 1.5 hour at RT. The signal is developed using an Enhanced Chemiluminescent detection (ECL) kit (Catalog # EK1002) with Tanon 5200 system. A specific band was detected for CTLA4 at approximately 25KD. The expected band size for CTLA4 is at 25KD.



Immunohistochemistry

Image 2. IHC analysis of CTLA4 using anti-CTLA4 antibody . CTLA4 was detected in paraffin-embedded section of mouse spleen tissue . Heat mediated antigen retrieval was performed in citrate buffer (pH6, epitope retrieval solution) for 20 mins. The tissue section was blocked with 10% goat serum. The tissue section was then incubated with 1µg/ml rabbit anti-CTLA4 Antibody overnight at 4°C. Biotinylated goat anti-rabbit IgG was used as secondary antibody and incubated for 30 minutes at 37°C. The tissue section was developed using Streptavidin-Biotin-Complex (SABC)(Catalog # SA1022) with DAB as the chromogen.



Immunohistochemistry

Image 3. IHC analysis of CTLA4 using anti-CTLA4 antibody . CTLA4 was detected in paraffin-embedded section of rat lymphaden tissue. Heat mediated antigen retrieval was performed in citrate buffer (pH6, epitope retrieval solution) for 20 mins. The tissue section was blocked with 10% goat serum. The tissue section was then incubated with 1µg/ml rabbit anti-CTLA4 Antibody overnight at 4°C. Biotinylated goat anti-rabbit IgG was used as secondary antibody and incubated for 30 minutes at 37°C. The tissue section was developed using Streptavidin-Biotin-Complex (SABC)(Catalog # SA1022) with DAB as the chromogen.

Please check the [product details page](#) for more images. Overall 4 images are available for ABIN5518903.