



[Go to Product page](#)

Datasheet for ABIN5518904

anti-Cytochrome C antibody (AA 2-105)

5 Images

11 Publications

Overview

Quantity:	100 µg
Target:	Cytochrome C (CYCS)
Binding Specificity:	AA 2-105
Reactivity:	Human, Rat, Mouse
Host:	Rabbit
Clonality:	Polyclonal
Application:	Western Blotting (WB), Immunohistochemistry (Paraffin-embedded Sections) (IHC (p))

Product Details

Purpose:	Rabbit IgG polyclonal antibody for Cytochrome c, somatic(CyCS) detection. Tested with WB, IHC-P in Human,Mouse,Rat.
Immunogen:	E. coli-derived mouse Cytochrome C recombinant protein (Position: G2-E105). Mouse Cytochrome C shares 91.3% and 100% amino acid (aa) sequence identity with human and rat Cytochrome C, respectively.
Isotype:	IgG
Cross-Reactivity (Details):	No cross reactivity with other proteins.
Characteristics:	Rabbit IgG polyclonal antibody for Cytochrome c, somatic(CyCS) detection. Tested with WB, IHC-P in Human,Mouse,Rat. Gene Name: cytochrome c, somatic Protein Name: Cytochrome c, somatic
Purification:	Immunogen affinity purified.

Target Details

Target:	Cytochrome C (CYCS)
Alternative Name:	Cycs (CYCS Products)
Background:	<p>CYCS is also known as CYC, HCS or THC4. This gene encodes a small heme protein that functions as a central component of the electron transport chain in mitochondria. The encoded protein associates with the inner membrane of the mitochondrion where it accepts electrons from cytochrome b and transfers them to the cytochrome oxidase complex. This protein is also involved in initiation of apoptosis. Mutations in this gene are associated with autosomal dominant nonsyndromic thrombocytopenia. Numerous processed pseudogenes of this gene are found throughout the human genome.</p> <p>Synonyms: Cytochrome c, somatic, Cycs</p>
Gene ID:	13063
UniProt:	P62897
Pathways:	Apoptosis , Caspase Cascade in Apoptosis , Positive Regulation of Endopeptidase Activity

Application Details

Application Notes:	<p>WB: Concentration: 0.1-0.5 µg/mL, Tested Species: Human, Mouse, Rat</p> <p>IHC-P: Concentration: 0.5-1 µg/mL, Tested Species: Mouse, Rat, Epitope Retrieval by Heat: Boiling the paraffin sections in 10 mM citrate buffer, pH 6.0, for 20 mins is required for the staining of formalin/paraffin sections.</p> <p>Notes: Tested Species: Species with positive results. Other applications have not been tested. Optimal dilutions should be determined by end users.</p>
Comment:	Boster recommends Enhanced Chemiluminescent Kit with anti-Rabbit IgG (ABIN921124) for Western blot, and HRP Conjugated anti-Rabbit IgG Super Vision Assay Kit (SV0002-1) for IHC(P).
Restrictions:	For Research Use only

Handling

Format:	Lyophilized
Reconstitution:	Add 0.2 mL of distilled water will yield a concentration of 500 µg/mL.
Concentration:	500 µg/mL

Handling

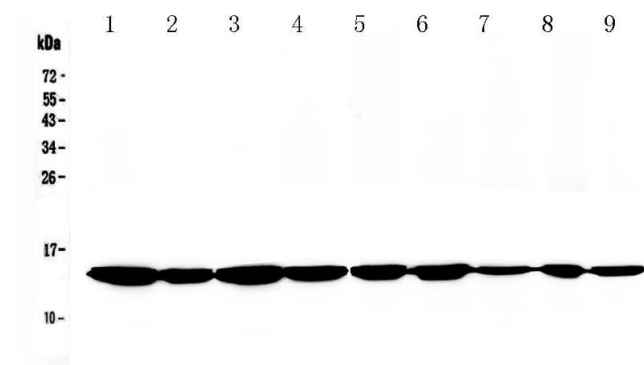
Buffer:	Each vial contains 5 mg BSA, 0.9 mg NaCl, 0.2 mg Na ₂ HPO ₄ , 0.05 mg Sodium azide.
Preservative:	Sodium azide
Precaution of Use:	This product contains Sodium azide: a POISONOUS AND HAZARDOUS SUBSTANCE which should be handled by trained staff only.
Storage:	4 °C,-20 °C
Storage Comment:	At -20°C for one year. After reconstitution, at 4°C for one month. It can also be aliquotted and stored frozen at -20 °C for a longer time. Avoid repeated freezing and thawing.

Publications

Product cited in: Hsu, Katz, Ix, de Boer, Kestenbaum, Shlipak: "Association of fibroblast growth factor-23 with arterial stiffness in the Multi-Ethnic Study of Atherosclerosis." in: **Nephrology, dialysis, transplantation : official publication of the European Dialysis and Transplant Association - European Renal Association**, Vol. 29, Issue 11, pp. 2099-105, (2015) ([PubMed](#)).

There are more publications referencing this product on: [Product page](#)

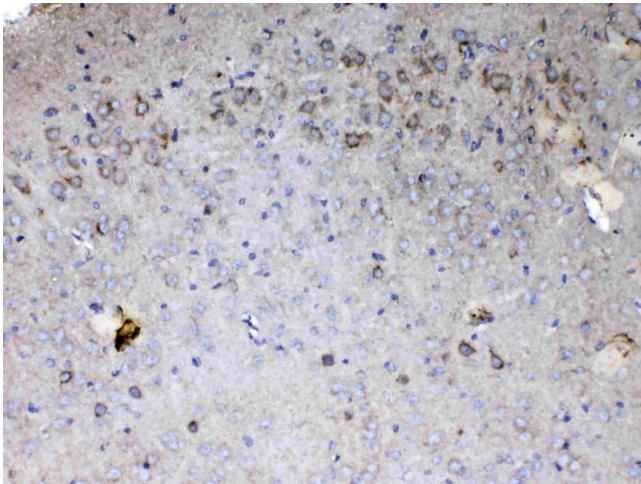
Images



Western Blotting

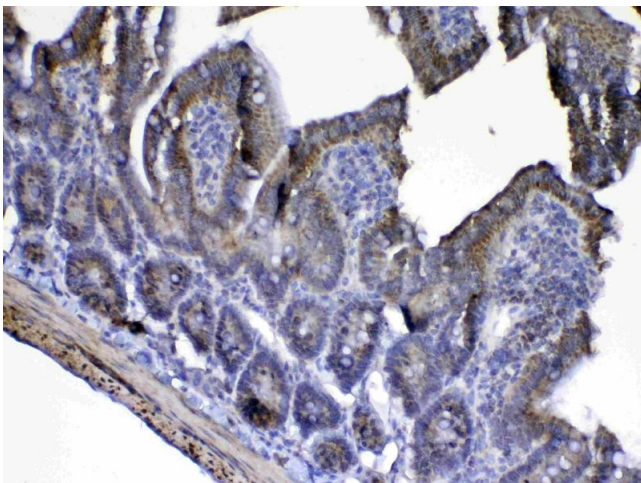
Image 1. Western blot analysis of Cytochrome C using anti-Cytochrome C antibody . Electrophoresis was performed on a 5-20% SDS-PAGE gel at 70V (Stacking gel) / 90V (Resolving gel) for 2-3 hours. The sample well of each Lane was loaded with 50ug of sample under reducing conditions. Lane 1: rat brain tissue lysate, Lane 2: rat heart tissue lysate, Lane 3: mouse brain tissue lysate, Lane 4: mouse heart tissue lysate, Lane 5: human Hela whole Cell lysate, Lane 6: human MCF-7 whole Cell lysate, Lane 7: human 293T whole Cell lysate, Lane 8: human HepG2 whole Cell lysate, Lane 9: human Jurkat whole Cell lysate. After Electrophoresis, proteins were transferred to a Nitrocellulose membrane at 150mA for 50-90 minutes. Blocked the membrane with 5%

Non-fat Milk/ TBS for 1.5 hour at RT. The membrane was incubated with rabbit anti-Cytochrome C antigen affinity purified polyclonal antibody (Catalog #) at 0.5 µg/mL overnight at 4°C, then washed with TBS-0.1%Tween 3 times with 5 minutes each and probed with a goat anti-rabbit IgG-HRP secondary antibody at a dilution of 1:10000 for 1.5 hour at RT. The signal is developed using an Enhanced Chemiluminescent detection (ECL) kit (Catalog # EK1002) with Tanon 5200 system. A specific band was detected for Cytochrome C at approximately 14KD. The expected band size for Cytochrome C is at 12KD.



Immunohistochemistry

Image 2. IHC analysis of Cytochrome C using anti-Cytochrome C antibody . Cytochrome C was detected in paraffin-embedded section of mouse brain tissue . Heat mediated antigen retrieval was performed in citrate buffer (pH6, epitope retrieval solution) for 20 mins. The tissue section was blocked with 10% goat serum. The tissue section was then incubated with 1µg/ml rabbit anti-Cytochrome C Antibody overnight at 4°C. Biotinylated goat anti-rabbit IgG was used as secondary antibody and incubated for 30 minutes at 37°C. The tissue section was developed using Streptavidin-Biotin-Complex (SABC)(Catalog # SA1022) with DAB as the chromogen.



Immunohistochemistry

Image 3. IHC analysis of Cytochrome C using anti-Cytochrome C antibody . Cytochrome C was detected in paraffin-embedded section of mouse intestine tissue . Heat mediated antigen retrieval was performed in citrate buffer (pH6, epitope retrieval solution) for 20 mins. The tissue section was blocked with 10% goat serum. The tissue section was then incubated with 1µg/ml rabbit anti-Cytochrome C Antibody overnight at 4°C. Biotinylated goat anti-rabbit IgG was used as secondary antibody and

incubated for 30 minutes at 37°C. The tissue section was developed using Streptavidin-Biotin-Complex (SABC)(Catalog # SA1022) with DAB as the chromogen.

Please check the [product details page](#) for more images. Overall 5 images are available for ABIN5518904.