

Datasheet for ABIN5518945
anti-PREB antibody (AA 42-236)



[Go to Product page](#)

1 Image

Overview

Quantity:	100 µg
Target:	PREB
Binding Specificity:	AA 42-236
Reactivity:	Human
Host:	Rabbit
Clonality:	Polyclonal
Conjugate:	This PREB antibody is un-conjugated
Application:	Western Blotting (WB)

Product Details

Purpose:	Rabbit IgG polyclonal antibody for Prolactin regulatory element-binding protein(PREB) detection. Tested with WB in Human.
Immunogen:	E. coli-derived human PREB recombinant protein (Position: K42-N236). Human PREB shares 87.7% amino acid (aa) sequence identity with both mouse and rat PREB.
Isotype:	IgG
Cross-Reactivity (Details):	No cross reactivity with other proteins.
Characteristics:	<p>Rabbit IgG polyclonal antibody for Prolactin regulatory element-binding protein(PREB) detection. Tested with WB in Human.</p> <p>Gene Name: prolactin regulatory element binding</p> <p>Protein Name: Prolactin regulatory element-binding protein</p>
Purification:	Immunogen affinity purified.

Target Details

Target:	PREB
Alternative Name:	PREB (PREB Products)
Background:	<p>Prolactin regulatory element-binding protein is a protein that in humans is encoded by the PREB gene. This gene encodes a protein that specifically binds to a Pit1-binding element of the prolactin (PRL) promoter. This protein may act as a transcriptional regulator and is thought to be involved in some of the developmental abnormalities observed in patients with partial trisomy 2p. This gene overlaps the abhydrolase domain containing 1 (ABHD1) gene on the opposite strand.</p> <p>Synonyms: Prolactin regulatory element-binding protein, Mammalian guanine nucleotide exchange factor mSec12, PREB, SEC12</p>
Gene ID:	10113
Pathways:	ER-Nucleus Signaling

Application Details

Application Notes:	<p>WB: Concentration: 0.1-0.5 µg/mL, Tested Species: Human</p> <p>Notes: Tested Species: Species with positive results.</p> <p>Other applications have not been tested. Optimal dilutions should be determined by end users.</p>
Comment:	Boster recommends Enhanced Chemiluminescent Kit with anti-Rabbit IgG (ABIN921124) for Western blot.
Restrictions:	For Research Use only

Handling

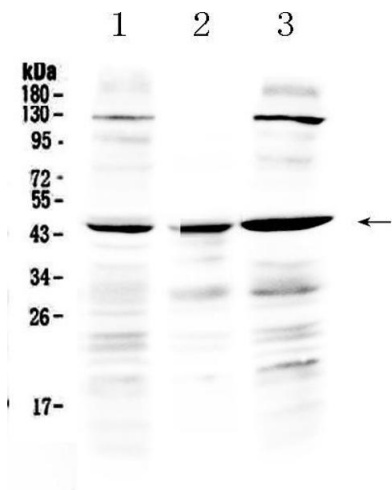
Format:	Lyophilized
Reconstitution:	Add 0.2 mL of distilled water will yield a concentration of 500 µg/mL.
Concentration:	500 µg/mL
Buffer:	Each vial contains 5 mg BSA, 0.9 mg NaCl, 0.2 mg Na2HPO4, 0.05 mg Sodium azide.
Preservative:	Sodium azide
Precaution of Use:	This product contains Sodium azide: a POISONOUS AND HAZARDOUS SUBSTANCE which should be handled by trained staff only.
Storage:	4 °C, -20 °C

Handling

Storage Comment: At -20°C for one year. After reconstitution, at 4°C for one month.

It can also be aliquotted and stored frozen at -20 °C for a longer time. Avoid repeated freezing and thawing.

Images



Western Blotting

Image 1. Western blot analysis of PREB using anti-PREB antibody . Electrophoresis was performed on a 5-20% SDS-PAGE gel at 70V (Stacking gel) / 90V (Resolving gel) for 2-3 hours. The sample well of each Lane was loaded with 50ug of sample under reducing conditions. Lane 1: human Hela whole cell lysate, Lane 2: human placenta tissue lysate, Lane 3: human A549 whole cell lysate. After Electrophoresis, proteins were transferred to a Nitrocellulose membrane at 150mA for 50-90 minutes. Blocked the membrane with 5% Non-fat Milk/ TBS for 1.5 hour at RT. The membrane was incubated with rabbit anti-PREB antigen affinity purified polyclonal antibody (Catalog #) at 0.5 µg/mL overnight at 4°C, then washed with TBS-0.1%Tween 3 times with 5 minutes each and probed with a goat anti-rabbit IgG-HRP secondary antibody at a dilution of 1:10000 for 1.5 hour at RT. The signal is developed using an Enhanced Chemiluminescent detection (ECL) kit (Catalog # EK1002) with Tanon 5200 system. A specific band was detected for PREB at approximately 45KD. The expected band size for PREB is at 45KD.