



[Go to Product page](#)

Datasheet for ABIN5518952
anti-RND1 antibody (AA 105-229)

1 Image

Overview

Quantity:	100 µg
Target:	RND1
Binding Specificity:	AA 105-229
Reactivity:	Mouse
Host:	Rabbit
Clonality:	Polyclonal
Application:	Western Blotting (WB)

Product Details

Purpose:	Rabbit IgG polyclonal antibody for Rho-related GTP-binding protein Rho6(RND1) detection. Tested with WB in Human,Mouse.
Immunogen:	E. coli-derived human RND1 recombinant protein (Position: K105-C229). Human RND1 shares 95.2% amino acid (aa) sequence identity with mouse RND1.
Isotype:	IgG
Cross-Reactivity (Details):	Predicted Cross Reactivity: human No cross reactivity with other proteins. Predicted Cross Reactivity: Species predicted to be fit for the product based on sequence similarities.
Characteristics:	Rabbit IgG polyclonal antibody for Rho-related GTP-binding protein Rho6(RND1) detection. Tested with WB in Human,Mouse. Gene Name: Rho family GTPase 1

Product Details

Protein Name: Rho-related GTP-binding protein Rho6

Purification: Immunogen affinity purified.

Target Details

Target: RND1

Alternative Name: RND1 ([RND1 Products](#))

Background: Rnd1 is a small (~21 kDa) signaling G protein (to be specific, a GTPase), and is a member of the Rndsubgroup of the Rho family of GTPases. Members of this family regulate the organization of the actin cytoskeleton in response to extracellular growth factors. A similar protein in rat interacts with a microtubule regulator to control axon extension. The RND1 gene is mapped to chromosome 12q12-q13.

Synonyms: Rho-related GTP-binding protein Rho6, Rho family GTPase 1, Rnd1, RND1, RHO6

Gene ID: 27289

UniProt: [Q92730](#)

Application Details

Application Notes: WB: Concentration: 0.1-0.5 µg/mL, Tested Species: Mouse, Predicted Species: Human
Notes: Tested Species: Species with positive results. Predicted Species: Species predicted to be fit for the product based on sequence similarities.
Other applications have not been tested. Optimal dilutions should be determined by end users.

Comment: Boster recommends Enhanced Chemiluminescent Kit with anti-Rabbit IgG (ABIN921124) for Western blot.

Restrictions: For Research Use only

Handling

Format: Lyophilized

Reconstitution: Add 0.2 mL of distilled water will yield a concentration of 500 µg/mL.

Concentration: 500 µg/mL

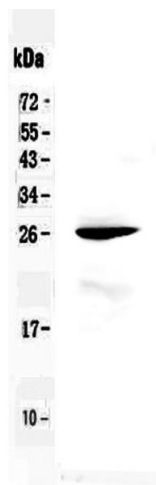
Buffer: Each vial contains 5 mg BSA, 0.9 mg NaCl, 0.2 mg Na₂HPO₄, 0.05 mg Sodium azide.

Preservative: Sodium azide

Handling

Precaution of Use:	This product contains Sodium azide: a POISONOUS AND HAZARDOUS SUBSTANCE which should be handled by trained staff only.
Storage:	4 °C,-20 °C
Storage Comment:	At -20°C for one year. After reconstitution, at 4°C for one month. It can also be aliquotted and stored frozen at -20 °C for a longer time. Avoid repeated freezing and thawing.

Images



Western Blotting

Image 1. Western blot analysis of RND1 using anti-RND1 antibody . Electrophoresis was performed on a 5-20% SDS-PAGE gel at 70V (Stacking gel) / 90V (Resolving gel) for 2-3 hours. The sample well of each Lane was loaded with 50ug of sample under reducing conditions. Lane 1: mouse liver tissue lysate. After Electrophoresis, proteins were transferred to a Nitrocellulose membrane at 150mA for 50-90 minutes. Blocked the membrane with 5% Non-fat Milk/TBS for 1.5 hour at RT. The membrane was incubated with rabbit anti-RND1 antigen affinity purified polyclonal antibody (Catalog #) at 0.5 µg/mL overnight at 4°C, then washed with TBS-0.1%Tween 3 times with 5 minutes each and probed with a goat anti-rabbit IgG-HRP secondary antibody at a dilution of 1:10000 for 1.5 hour at RT. The signal is developed using an Enhanced Chemiluminescent detection (ECL) kit (Catalog # EK1002) with Tanon 5200 system. A specific band was detected for RND1 at approximately 26KD. The expected band size for RND1 is at 26KD.