

Datasheet for ABIN5518956

anti-SIX Homeobox 6 antibody (AA 188-246)[Go to Product page](#)**1** Image

Overview

Quantity:	100 µg
Target:	SIX Homeobox 6 (SIX6)
Binding Specificity:	AA 188-246
Reactivity:	Human
Host:	Rabbit
Clonality:	Polyclonal
Conjugate:	This SIX Homeobox 6 antibody is un-conjugated
Application:	Western Blotting (WB)

Product Details

Purpose:	Rabbit IgG polyclonal antibody for Homeobox protein SIX6(SIX6) detection. Tested with WB in Human.
Immunogen:	E. coli-derived human SIX6 recombinant protein (Position: A188-I246). Human SIX6 shares 91.5% amino acid (aa) sequence identity with mouse SIX6.
Isotype:	IgG
Cross-Reactivity (Details):	No cross reactivity with other proteins.
Characteristics:	<p>Rabbit IgG polyclonal antibody for Homeobox protein SIX6(SIX6) detection. Tested with WB in Human.</p> <p>Gene Name: SIX homeobox 6</p> <p>Protein Name: Homeobox protein SIX6</p>
Purification:	Immunogen affinity purified.

Target Details

Target:	SIX Homeobox 6 (SIX6)
Alternative Name:	SIX6 (SIX6 Products)
Background:	<p>The protein encoded by this gene is a homeobox protein that is similar to the Drosophila 'sine oculis' gene product. This gene is found in a cluster of related genes on chromosome 14 and is thought to be involved in eye development. Defects in this gene are a cause of isolated microphthalmia with cataract type 2 (MCOPCT2).</p> <p>Synonyms: Homeobox protein SIX6, Homeodomain protein OPTX2, Optic homeobox 2, Sine oculis homeobox homolog 6, SIX6, OPTX2, SIX9</p>
Gene ID:	4990
UniProt:	O95475

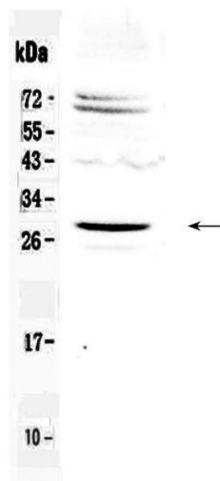
Application Details

Application Notes:	<p>WB: Concentration: 0.1-0.5 µg/mL, Tested Species: Human</p> <p>Notes: Tested Species: Species with positive results.</p> <p>Other applications have not been tested. Optimal dilutions should be determined by end users.</p>
Comment:	Boster recommends Enhanced Chemiluminescent Kit with anti-Rabbit IgG (ABIN921124) for Western blot.
Restrictions:	For Research Use only

Handling

Format:	Lyophilized
Reconstitution:	Add 0.2 mL of distilled water will yield a concentration of 500 µg/mL.
Concentration:	500 µg/mL
Buffer:	Each vial contains 5 mg BSA, 0.9 mg NaCl, 0.2 mg Na2HPO4, 0.05 mg Sodium azide.
Preservative:	Sodium azide
Precaution of Use:	This product contains Sodium azide: a POISONOUS AND HAZARDOUS SUBSTANCE which should be handled by trained staff only.
Storage:	4 °C,-20 °C
Storage Comment:	At -20°C for one year. After reconstitution, at 4°C for one month.

It can also be aliquotted and stored frozen at -20 °C for a longer time. Avoid repeated freezing and thawing.



Western Blotting

Image 1. Western blot analysis of SIX6 using anti-SIX6 antibody . Electrophoresis was performed on a 5-20% SDS-PAGE gel at 70V (Stacking gel) / 90V (Resolving gel) for 2-3 hours. The sample well of each Lane was loaded with 50ug of sample under reducing conditions. Lane 1: human Hela whole cell lysate. After Electrophoresis, proteins were transferred to a Nitrocellulose membrane at 150mA for 50-90 minutes. Blocked the membrane with 5% Non-fat Milk/TBS for 1.5 hour at RT. The membrane was incubated with rabbit anti-SIX6 antigen affinity purified polyclonal antibody (Catalog #) at 0.5 µg/mL overnight at 4°C, then washed with TBS-0.1%Tween 3 times with 5 minutes each and probed with a goat anti-rabbit IgG-HRP secondary antibody at a dilution of 1:10000 for 1.5 hour at RT. The signal is developed using an Enhanced Chemiluminescent detection (ECL) kit (Catalog # EK1002) with Tanon 5200 system. A specific band was detected for SIX6 at approximately 28KD. The expected band size for SIX6 is at 28KD.