

Datasheet for ABIN5518984  
**anti-FGF7 antibody (AA 32-194)**[Go to Product page](#)[1 Image](#)[1 Publication](#)

## Overview

Quantity:	100 µg
Target:	FGF7
Binding Specificity:	AA 32-194
Reactivity:	Mouse, Rat
Host:	Rabbit
Clonality:	Polyclonal
Conjugate:	This FGF7 antibody is un-conjugated
Application:	Western Blotting (WB), ELISA

## Product Details

Purpose:	Rabbit IgG polyclonal antibody for KGF detection. Tested with WB, Direct ELISA in Mouse,Rat.
Immunogen:	E. coli-derived mouse KGF recombinant protein (Position: C32-T194).
Isotype:	IgG
Cross-Reactivity (Details):	No cross reactivity with other proteins.
Characteristics:	Rabbit IgG polyclonal antibody for KGF detection. Tested with WB, Direct ELISA in Mouse,Rat. Gene Name: fibroblast growth factor 7 Protein Name: Fibroblast growth factor 7
Purification:	Immunogen affinity purified.

## Target Details

Target:	FGF7
Alternative Name:	Fgf7 ( <a href="#">FGF7 Products</a> )
Background:	<p>Keratinocyte growth factor is a protein that in humans is encoded by the FGF7 gene. The protein encoded by this gene is a member of the fibroblast growth factor (FGF) family. FGF family members possess broad mitogenic and cell survival activities, and are involved in a variety of biological processes, including embryonic development, cell growth, morphogenesis, tissue repair, tumor growth and invasion. This protein is a potent epithelial cell-specific growth factor, whose mitogenic activity is predominantly exhibited in keratinocytes but not in fibroblasts and endothelial cells. Studies of mouse and rat homologs of this gene implicated roles in morphogenesis of epithelium, reepithelialization of wounds, hair development and early lung organogenesis.</p> <p>Synonyms: Fibroblast growth factor 7, FGF-7, Heparin-binding growth factor 7, HBGF-7, Keratinocyte growth factor, KGF, Fgf7, Fgf-7, Kgf</p>
Gene ID:	14178
UniProt:	<a href="#">P36363</a>
Pathways:	<a href="#">RTK Signaling</a> , <a href="#">Fc-epsilon Receptor Signaling Pathway</a> , <a href="#">EGFR Signaling Pathway</a> , <a href="#">Neurotrophin Signaling Pathway</a>

## Application Details

Application Notes:	<p>Notes: Tested Species: Species with positive results.</p> <p>Other applications have not been tested. Optimal dilutions should be determined by end users.</p>
Comment:	Boster recommends Enhanced Chemiluminescent Kit with anti-Rabbit IgG (ABIN921124) for Western blot.
Restrictions:	For Research Use only

## Handling

Format:	Lyophilized
Reconstitution:	Add 0.2 mL of distilled water will yield a concentration of 500 µg/mL.
Concentration:	500 µg/mL
Buffer:	Each vial contains 5 mg BSA, 0.9 mg NaCl, 0.2 mg Na2HPO4, 0.05 mg Sodium azide.

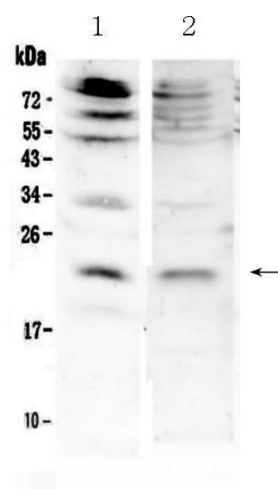
## Handling

Preservative:	Sodium azide
Precaution of Use:	This product contains Sodium azide: a POISONOUS AND HAZARDOUS SUBSTANCE which should be handled by trained staff only.
Storage:	4 °C,-20 °C
Storage Comment:	At -20°C for one year. After reconstitution, at 4°C for one month. It can also be aliquotted and stored frozen at -20 °C for a longer time. Avoid repeated freezing and thawing.

## Publications

Product cited in:	Leira, Iglesias-Rey, Gómez-Lado, Aguiar, Campos, DAiuto, Castillo, Blanco, Sobrino: " Porphyromonas gingivalis lipopolysaccharide-induced periodontitis and serum amyloid-beta peptides." in: <b>Archives of oral biology</b> , Vol. 99, pp. 120-125, (2019) ( <a href="#">PubMed</a> ).
-------------------	--

## Images



### Western Blotting

**Image 1.** Western blot analysis of KGF using anti-KGF antibody . Electrophoresis was performed on a 5-20% SDS-PAGE gel at 70V (Stacking gel) / 90V (Resolving gel) for 2-3 hours. The sample well of each Lane was loaded with 50ug of sample under reducing conditions. Lane 1: mouse brain tissue lysates, Lane 2: rat RH35 whole cell lysates. After Electrophoresis, proteins were transferred to a Nitrocellulose membrane at 150mA for 50-90 minutes. Blocked the membrane with 5% Non-fat Milk/ TBS for 1.5 hour at RT. The membrane was incubated with rabbit anti-KGF antigen affinity purified polyclonal antibody (Catalog # ) at 0.5 ug/mL overnight at 4°C, then washed with TBS-0.1%Tween 3 times with 5 minutes each and probed with a goat anti-rabbit IgG-HRP secondary antibody at a dilution of 1:10000 for 1.5 hour at RT. The signal is developed using an Enhanced Chemiluminescent detection (ECL) kit (Catalog # EK1002) with Tanon 5200 system. A specific band was

detected for KGF at approximately 22KD. The expected band size for KGF is at 22KD.