

Datasheet for ABIN5519007
anti-IL1F10 antibody (AA 1-152)

2 Images

[Go to Product page](#)

Overview

Quantity:	100 µg
Target:	IL1F10
Binding Specificity:	AA 1-152
Reactivity:	Human, Mouse, Rat
Host:	Rabbit
Clonality:	Polyclonal
Application:	ELISA, Western Blotting (WB)

Product Details

Purpose:	Rabbit IgG polyclonal antibody for IL1F10 detection. Tested with WB, Direct ELISA in Human, Mouse, Rat.
Immunogen:	E. coli-derived human IL1F10 recombinant protein (Position: M1-W152).
Isotype:	IgG
Cross-Reactivity (Details):	No cross reactivity with other proteins.
Characteristics:	<p>Rabbit IgG polyclonal antibody for IL1F10 detection. Tested with WB, Direct ELISA in Human, Mouse, Rat.</p> <p>Gene Name: interleukin 1 family member 10 (theta)</p> <p>Protein Name: Interleukin-1 family member 10</p>
Purification:	Immunogen affinity purified.

Target Details

Target:	IL1F10
Alternative Name:	IL1F10 (IL1F10 Products)
Background:	<p>Interleukin-1 family member 10 is a protein that in humans is encoded by the IL1F10 gene. The protein encoded by this gene is a member of the interleukin 1 cytokine family. This gene and eight other interleukin 1 family genes form a cytokine gene cluster on chromosome 2. This cytokine is thought to participate in a network of interleukin 1 family members to regulate adapted and innate immune responses.</p> <p>Synonyms: Interleukin-1 family member 10, IL-1F10, Family of interleukin 1-theta, FIL1 theta, Interleukin-1 HY2, IL-1HY2, Interleukin-1 theta, IL-1 theta, Interleukin-38, IL-38, IL1F10, FIL1T, IL1HY2, IL38, FKSG75, UNQ6119/PRO20041</p>
Gene ID:	84639

Application Details

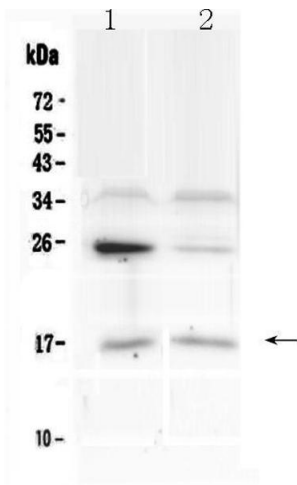
Application Notes:	<p>Notes: Tested Species: Species with positive results.</p> <p>Other applications have not been tested. Optimal dilutions should be determined by end users.</p>
Comment:	Boster recommends Enhanced Chemiluminescent Kit with anti-Rabbit IgG (ABIN921124) for Western blot.
Restrictions:	For Research Use only

Handling

Format:	Lyophilized
Reconstitution:	Add 0.2 mL of distilled water will yield a concentration of 500 µg/mL.
Concentration:	500 µg/mL
Buffer:	Each vial contains 5 mg BSA, 0.9 mg NaCl, 0.2 mg Na2HPO4, 0.05 mg Sodium azide.
Preservative:	Sodium azide
Precaution of Use:	This product contains Sodium azide: a POISONOUS AND HAZARDOUS SUBSTANCE which should be handled by trained staff only.
Storage:	4 °C,-20 °C
Storage Comment:	<p>At -20°C for one year. After reconstitution, at 4°C for one month.</p> <p>It can also be aliquotted and stored frozen at -20 °C for a longer time. Avoid repeated freezing</p>

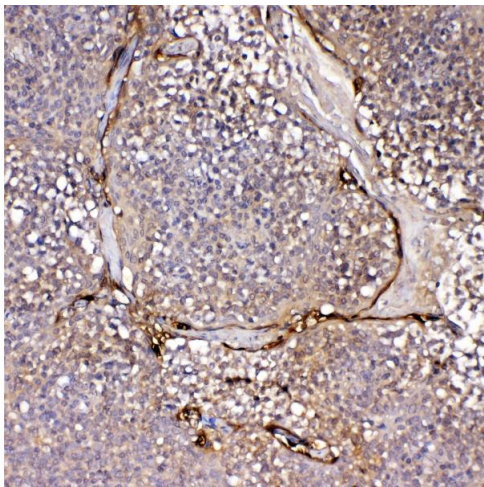
and thawing.

Images



Western Blotting

Image 1. Western blot analysis of IL1F10 using anti-IL1F10 antibody . Electrophoresis was performed on a 5-20% SDS-PAGE gel at 70V (Stacking gel) / 90V (Resolving gel) for 2-3 hours. The sample well of each Lane was loaded with 50ug of sample under reducing conditions. Lane 1: human U87MG whole cell lysates, Lane 2: human placenta tissue lysates. After Electrophoresis, proteins were transferred to a Nitrocellulose membrane at 150mA for 50-90 minutes. Blocked the membrane with 5% Non-fat Milk/ TBS for 1.5 hour at RT. The membrane was incubated with rabbit anti-IL1F10 antigen affinity purified polyclonal antibody (Catalog #) at 0.5 ug/mL overnight at 4°C, then washed with TBS-0.1%Tween 3 times with 5 minutes each and probed with a goat anti-rabbit IgG-HRP secondary antibody at a dilution of 1:10000 for 1.5 hour at RT. The signal is developed using an Enhanced Chemiluminescent detection (ECL) kit (Catalog # EK1002) with Tanon 5200 system. A specific band was detected for IL1F10 at approximately 17KD. The expected band size for IL1F10 is at 17KD.



Immunohistochemistry

Image 2. IHC analysis of IL1F10 using anti-IL1F10 antibody . IL1F10 was detected in paraffin-embedded section of human tonsil tissue . Heat mediated antigen retrieval was performed in citrate buffer (pH6, epitope retrieval solution) for 20 mins. The tissue section was blocked with 10% goat serum. The tissue section was then incubated with 1µg/ml rabbit anti-IL1F10 Antibody overnight at 4°C. Biotinylated goat anti-rabbit IgG was used as secondary antibody and incubated for 30 minutes at 37°C. The tissue section was

developed using Streptavidin-Biotin-Complex (SABC)(Catalog # SA1022) with DAB as the chromogen.