

Datasheet for ABIN5519011
anti-IL15RA antibody (AA 31-174)



[Go to Product page](#)

3 Images

Overview

Quantity:	100 µg
Target:	IL15RA
Binding Specificity:	AA 31-174
Reactivity:	Human, Rat, Mouse
Host:	Rabbit
Clonality:	Polyclonal
Conjugate:	This IL15RA antibody is un-conjugated
Application:	Western Blotting (WB), ELISA, Immunohistochemistry (Paraffin-embedded Sections) (IHC (p))

Product Details

Purpose:	Rabbit IgG polyclonal antibody for IL15RA detection. Tested with WB, IHC-P, Direct ELISA in Human, Mouse, Rat.
Immunogen:	E. coli-derived human IL15RA recombinant protein (Position: I31-T174).
Isotype:	IgG
Cross-Reactivity (Details):	No cross reactivity with other proteins.
Characteristics:	<p>Rabbit IgG polyclonal antibody for IL15RA detection. Tested with WB, IHC-P, Direct ELISA in Human, Mouse, Rat.</p> <p>Gene Name: interleukin 15 receptor subunit alpha</p> <p>Protein Name: Interleukin-15 receptor subunit alpha</p>
Purification:	Immunogen affinity purified.

Target Details

Target:	IL15RA
Alternative Name:	IL15RA (IL15RA Products)
Background:	<p>Interleukin 15 receptor, alpha subunit is a subunit of the interleukin 15 receptor that in humans is encoded by the IL15RA gene. This gene encodes a cytokine receptor that specifically binds interleukin 15 (IL15) with high affinity. The receptors of IL15 and IL2 share two subunits, IL2R beta and IL2R gamma. This forms the basis of many overlapping biological activities of IL15 and IL2. The protein encoded by this gene is structurally related to IL2R alpha, an additional IL2-specific alpha subunit necessary for high affinity IL2 binding. Unlike IL2RA, IL15RA is capable of binding IL15 with high affinity independent of other subunits, which suggests distinct roles between IL15 and IL2. This receptor is reported to enhance cell proliferation and expression of apoptosis inhibitor BCL2L1/BCL2-XL and BCL2. Multiple alternatively spliced transcript variants of this gene have been reported.</p> <p>Synonyms: Interleukin-15 receptor subunit alpha, IL-15 receptor subunit alpha, IL-15R-alpha, IL-15RA, CD215, Soluble interleukin-15 receptor subunit alpha, sIL-15 receptor subunit alpha, sIL-15R-alpha, sIL-15RA, IL15RA</p>
Gene ID:	3601
UniProt:	Q13261
Pathways:	JAK-STAT Signaling

Application Details

Application Notes:	Notes: Tested Species: Species with positive results. Other applications have not been tested. Optimal dilutions should be determined by end users.
Comment:	Booster recommends Enhanced Chemiluminescent Kit with anti-Rabbit IgG (ABIN921124) for Western blot, and HRP Conjugated anti-Rabbit IgG Super Vision Assay Kit (SV0002-1) for IHC(P).
Restrictions:	For Research Use only

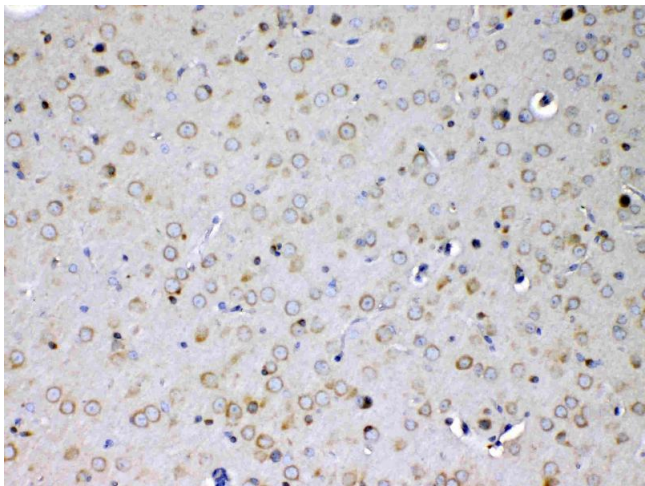
Handling

Format:	Lyophilized
Reconstitution:	Add 0.2 mL of distilled water will yield a concentration of 500 µg/mL.
Concentration:	500 µg/mL

Handling

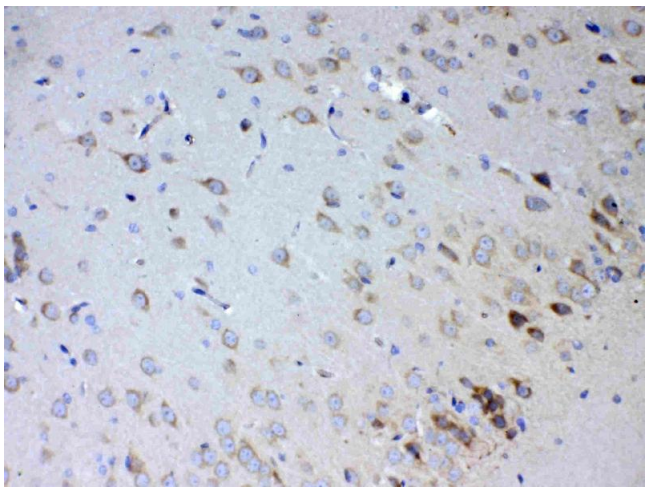
Buffer:	Each vial contains 5 mg BSA, 0.9 mg NaCl, 0.2 mg Na2HPO4, 0.05 mg Sodium azide.
Preservative:	Sodium azide
Precaution of Use:	This product contains Sodium azide: a POISONOUS AND HAZARDOUS SUBSTANCE which should be handled by trained staff only.
Storage:	4 °C,-20 °C
Storage Comment:	At -20°C for one year. After reconstitution, at 4°C for one month. It can also be aliquotted and stored frozen at -20 °C for a longer time. Avoid repeated freezing and thawing.

Images



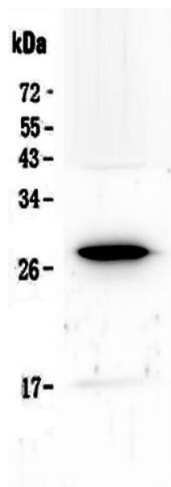
Immunohistochemistry

Image 1. IHC analysis of IL15RA using anti-IL15RA antibody .IL15RA was detected in paraffin-embedded section of mouse brain tissue. Heat mediated antigen retrieval was performed in citrate buffer (pH6, epitope retrieval solution) for 20 mins. The tissue section was blocked with 10% goat serum. The tissue section was then incubated with 1ug/ml rabbit anti-IL15RA Antibody overnight at 4°C. Biotinylated goat anti-rabbit IgG was used as secondary antibody and incubated for 30 minutes at 37°C. The tissue section was developed using Streptavidin-Biotin-Complex (SABC)(Catalog # SA1022) with DAB as the chromogen.



Immunohistochemistry

Image 2. IHC analysis of IL15RA using anti-IL15RA antibody .IL15RA was detected in paraffin-embedded section of rat brain tissue. Heat mediated antigen retrieval was performed in citrate buffer (pH6, epitope retrieval solution) for 20 mins. The tissue section was blocked with 10% goat serum. The tissue section was then incubated with 1ug/ml rabbit anti-IL15RA Antibody overnight at 4°C. Biotinylated goat anti-rabbit IgG was used as secondary antibody and incubated for 30 minutes at 37°C. The tissue section was developed



using Streptavidin-Biotin-Complex (SABC)(Catalog # SA1022) with DAB as the chromogen.

Western Blotting

Image 3. Western blot analysis of IL15RA using anti-IL15RA antibody . Electrophoresis was performed on a 5-20% SDS-PAGE gel at 70V (Stacking gel) / 90V (Resolving gel) for 2-3 hours. The sample well of each Lane was loaded with 50ug of sample under reducing conditions. Lane 1: human placenta tissue lysates. After Electrophoresis, proteins were transferred to a Nitrocellulose membrane at 150mA for 50-90 minutes. Blocked the membrane with 5% Non-fat Milk/TBS for 1.5 hour at RT. The membrane was incubated with rabbit anti-IL15RA antigen affinity purified polyclonal antibody (Catalog #) at 0.5 ug/mL overnight at 4°C, then washed with TBS-0.1%Tween 3 times with 5 minutes each and probed with a goat anti-rabbit IgG-HRP secondary antibody at a dilution of 1:10000 for 1.5 hour at RT. The signal is developed using an Enhanced Chemiluminescent detection (ECL) kit (Catalog # EK1002) with Tanon 5200 system. A specific band was detected for IL15RA at approximately 28KD. The expected band size for IL15RA is at 28KD.