

Datasheet for ABIN5519028
anti-MBL2 antibody (AA 19-244)

2 Images

[Go to Product page](#)

Overview

Quantity:	100 µg
Target:	MBL2
Binding Specificity:	AA 19-244
Reactivity:	Mouse, Rat
Host:	Rabbit
Clonality:	Polyclonal
Application:	Western Blotting (WB), ELISA, Immunohistochemistry (Paraffin-embedded Sections) (IHC (p))

Product Details

Purpose:	Rabbit IgG polyclonal antibody for MBL2 detection. Tested with WB, IHC-P, Direct ELISA in Mouse,Rat.
Immunogen:	E. coli-derived rat MBL2 recombinant protein (Position: E19-D244).
Isotype:	IgG
Cross-Reactivity (Details):	No cross reactivity with other proteins.
Characteristics:	<p>Rabbit IgG polyclonal antibody for MBL2 detection. Tested with WB, IHC-P, Direct ELISA in Mouse,Rat.</p> <p>Gene Name: mannose-binding lectin (protein C) 2</p> <p>Protein Name: Mannose-binding protein C</p>
Purification:	Immunogen affinity purified.

Target Details

Target:	MBL2
Alternative Name:	Mbl2 (MBL2 Products)
Background:	<p>MBL2, also called mannose-binding lectin (protein C) 2, soluble or Mannose-binding lectin (MBL) is a lectin that is instrumental in innate immunity. MBL2 is mapped to chromosome 10q11.2-q21. It belongs to the class of collectins in the C-type lectin superfamily, whose function appears to be pattern recognition in the first line of defense in the pre-immune host. MBL2 recognizes carbohydrate patterns, found on the surface of a large number of pathogenic micro-organisms, including bacteria, viruses, protozoa and fungi. Binding MBL2 to a micro-organism results in activation of the lectin pathway of the complement system. Another important function of MBL2 is that this molecule binds senescent and apoptotic cells and enhances engulfment of whole, intact apoptotic cells, as well as cell debris by phagocytes.</p> <p>Synonyms: Mannose-binding protein C, MBP-C, Mannan-binding protein, Ra-reactive factor polysaccharide-binding component p28A, RaRF p28A, Mbl2</p>
Gene ID:	64668
UniProt:	P08661
Pathways:	Complement System , Positive Regulation of Immune Effector Process

Application Details

Application Notes:	Notes: Tested Species: Species with positive results. Other applications have not been tested. Optimal dilutions should be determined by end users.
Comment:	Boster recommends Enhanced Chemiluminescent Kit with anti-Rabbit IgG (ABIN921124) for Western blot, and HRP Conjugated anti-Rabbit IgG Super Vision Assay Kit (SV0002-1) for IHC(P).
Restrictions:	For Research Use only

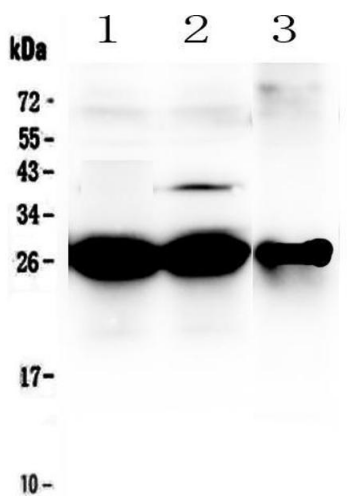
Handling

Format:	Lyophilized
Reconstitution:	Add 0.2 mL of distilled water will yield a concentration of 500 µg/mL.
Concentration:	500 µg/mL
Buffer:	Each vial contains 5 mg BSA, 0.9 mg NaCl, 0.2 mg Na2HPO4, 0.05 mg Sodium azide.

Handling

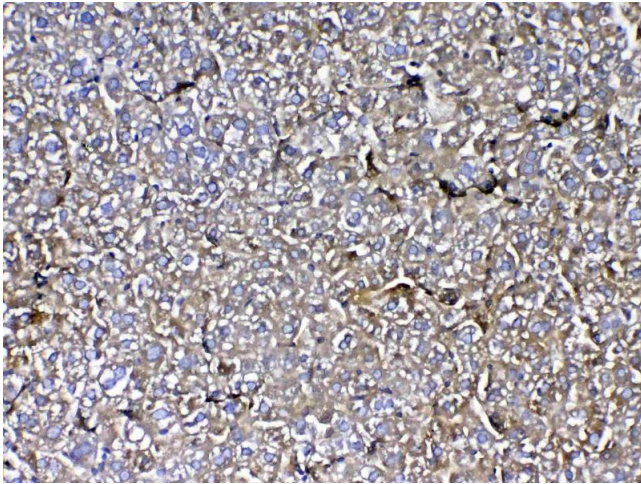
Preservative:	Sodium azide
Precaution of Use:	This product contains Sodium azide: a POISONOUS AND HAZARDOUS SUBSTANCE which should be handled by trained staff only.
Storage:	4 °C,-20 °C
Storage Comment:	At -20°C for one year. After reconstitution, at 4°C for one month. It can also be aliquotted and stored frozen at -20 °C for a longer time. Avoid repeated freezing and thawing.

Images



Western Blotting

Image 1. Western blot analysis of MBL2 using anti-MBL2 antibody . Electrophoresis was performed on a 5-20% SDS-PAGE gel at 70V (Stacking gel) / 90V (Resolving gel) for 2-3 hours. The sample well of each Lane was loaded with 50ug of sample under reducing conditions. Lane 1: rat liver tissue lysates, Lane 2: mouse liver tissue lysates, Lane 3: mouse HEPA1-6 whole cell lysates. After Electrophoresis, proteins were transferred to a Nitrocellulose membrane at 150mA for 50-90 minutes. Blocked the membrane with 5% Non-fat Milk/ TBS for 1.5 hour at RT. The membrane was incubated with rabbit anti-MBL2 antigen affinity purified polyclonal antibody (Catalog #) at 0.5 ug/mL overnight at 4°C, then washed with TBS-0.1%Tween 3 times with 5 minutes each and probed with a goat anti-rabbit IgG-HRP secondary antibody at a dilution of 1:10000 for 1.5 hour at RT. The signal is developed using an Enhanced Chemiluminescent detection (ECL) kit (Catalog # EK1002) with Tanon 5200 system. A specific band was detected for MBL2 at approximately 26KD. The expected band size for MBL2 is at 26KD.



Immunohistochemistry

Image 2. IHC analysis of MBL2 using anti-MBL2 antibody .MBL2 was detected in paraffin-embedded section of rat liver tissue. Heat mediated antigen retrieval was performed in citrate buffer (pH6, epitope retrieval solution) for 20 mins. The tissue section was blocked with 10% goat serum. The tissue section was then incubated with 1ug/ml rabbit anti-MBL2 Antibody overnight at 4°C. Biotinylated goat anti-rabbit IgG was used as secondary antibody and incubated for 30 minutes at 37°C. The tissue section was developed using Streptavidin-Biotin-Complex (SABC)(Catalog # SA1022) with DAB as the chromogen.