

Datasheet for ABIN5519035  
**anti-MED15 antibody (AA 1-285)**

## 6 Images

[Go to Product page](#)

## Overview

|                      |   |
|----------------------|---|
| Quantity:            | 100 µg  |
| Target:              | MED15   |
| Binding Specificity: | AA 1-285  |
| Reactivity:          | Human, Mouse, Rat   |
| Host:                | Rabbit  |
| Clonality:           | Polyclonal  |
| Application:         | Western Blotting (WB), ELISA, Immunohistochemistry (Paraffin-embedded Sections) (IHC (p)) |

## Product Details

|                             |  |
|-----------------------------|--|
| Purpose:                    | Rabbit IgG polyclonal antibody for MED15 detection. Tested with WB, IHC-P, Direct ELISA in Human, Mouse, Rat.  |
| Immunogen:                  | E. coli-derived human MED15 recombinant protein (Position: M1-A285).   |
| Isotype:                    | IgG  |
| Cross-Reactivity (Details): | No cross reactivity with other proteins.   |
| Characteristics:            | <p>Rabbit IgG polyclonal antibody for MED15 detection. Tested with WB, IHC-P, Direct ELISA in Human, Mouse, Rat.</p> <p>Gene Name: mediator complex subunit 15</p> <p>Protein Name: Mediator of RNA polymerase II transcription subunit 15</p> |
| Purification:               | Immunogen affinity purified.   |

## Target Details

|                   |  |
|-------------------|--|
| Target:           | MED15  |
| Alternative Name: | MED15 ( <a href="#">MED15 Products</a> )   |
| Background:       | <p>Mediator of RNA polymerase II transcription subunit 15, also known as Gal11, Spt13 in yeast and PCQAP, ARC105, or TIG-1 in humans is a protein encoded by the MED15 gene. The protein encoded by this gene is a subunit of the multiprotein complexes PC2 and ARC/DRIP and may function as a transcriptional coactivator in RNA polymerase II transcription. This gene contains stretches of trinucleotide repeats and is located in the chromosome 22 region which is deleted in DiGeorge syndrome.</p> <p>Synonyms: Mediator of RNA polymerase II transcription subunit 15, Activator-recruited cofactor 105 kDa component, ARC105, CTG repeat protein 7a, Mediator complex subunit 15, Positive cofactor 2 glutamine/Q-rich-associated protein, PC2 glutamine/Q-rich-associated protein, TPA-inducible gene 1 protein, TIG-1, Trinucleotide repeat-containing gene 7 protein, MED15, ARC105, CTG7A, PCQAP, TIG1, TNRC7</p> |
| Gene ID:          | 51586  |
| Pathways:         | <a href="#">Stem Cell Maintenance</a> , <a href="#">Regulation of Lipid Metabolism by PPARalpha</a>  |

## Application Details

|                    |  |
|--------------------|--|
| Application Notes: | Notes: Tested Species: Species with positive results. Other applications have not been tested. Optimal dilutions should be determined by end users.                                  |
| Comment:           | Boster recommends Enhanced Chemiluminescent Kit with anti-Rabbit IgG (ABIN921124) for Western blot, and HRP Conjugated anti-Rabbit IgG Super Vision Assay Kit (SV0002-1) for IHC(P). |
| Restrictions:      | For Research Use only  |

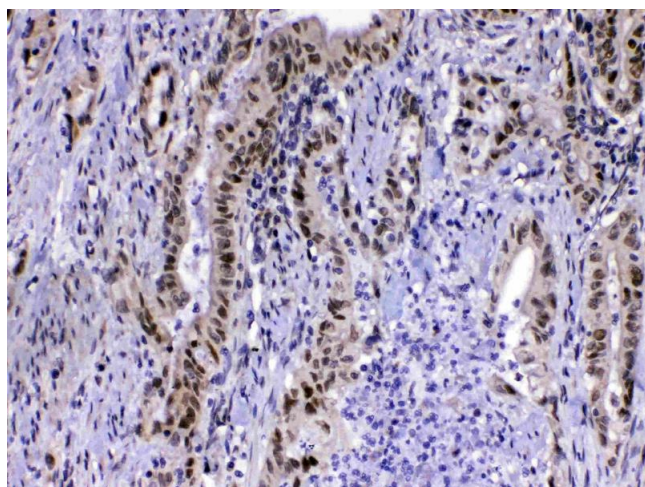
## Handling

|                 |   |
|-----------------|---|
| Format:         | Lyophilized   |
| Reconstitution: | Add 0.2 mL of distilled water will yield a concentration of 500 µg/mL.          |
| Concentration:  | 500 µg/mL   |
| Buffer:         | Each vial contains 5 mg BSA, 0.9 mg NaCl, 0.2 mg Na2HPO4, 0.05 mg Sodium azide. |
| Preservative:   | Sodium azide  |

## Handling

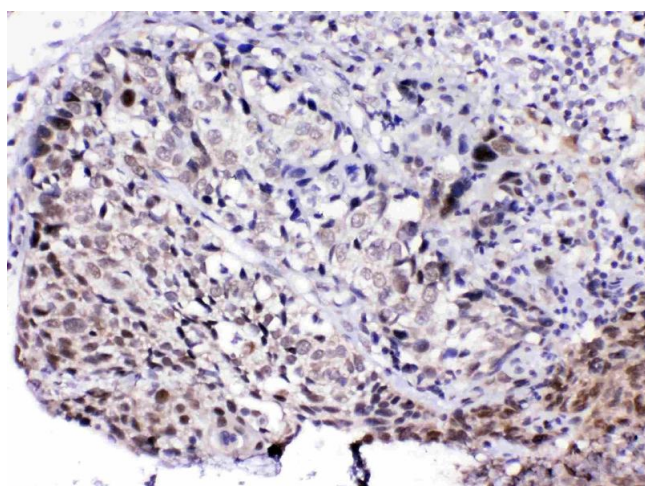
|                    |   |
|--------------------|---|
| Precaution of Use: | This product contains Sodium azide: a POISONOUS AND HAZARDOUS SUBSTANCE which should be handled by trained staff only.  |
| Storage:           | 4 °C, -20 °C  |
| Storage Comment:   | At -20°C for one year. After reconstitution, at 4°C for one month.<br>It can also be aliquotted and stored frozen at -20 °C for a longer time. Avoid repeated freezing and thawing. |

## Images



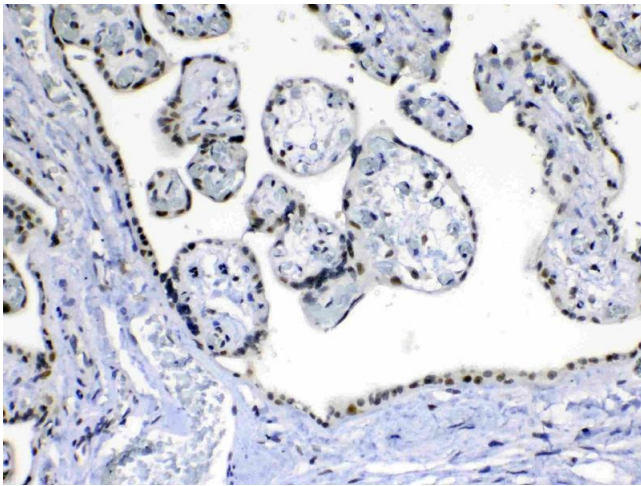
### Immunohistochemistry

**Image 1.** IHC analysis of MED15 using anti-MED15 antibody .MED15 was detected in paraffin-embedded section of human colon cancer tissue. Heat mediated antigen retrieval was performed in citrate buffer (pH6, epitope retrieval solution) for 20 mins. The tissue section was blocked with 10% goat serum. The tissue section was then incubated with 1ug/ml rabbit anti-MED15 Antibody overnight at 4â„ƒ. Biotinylated goat anti-rabbit IgG was used as secondary antibody and incubated for 30 minutes at 37â„ƒ. The tissue section was developed using Streptavidin-Biotin-Complex (SABC)(Catalog # SA1022) with DAB as the chromogen.



### Immunohistochemistry

**Image 2.** IHC analysis of MED15 using anti-MED15 antibody .MED15 was detected in paraffin-embedded section of human lung cancer tissue. Heat mediated antigen retrieval was performed in citrate buffer (pH6, epitope retrieval solution) for 20 mins. The tissue section was blocked with 10% goat serum. The tissue section was then incubated with 1ug/ml rabbit anti-MED15 Antibody overnight at 4â„ƒ. Biotinylated goat anti-rabbit IgG was used as secondary antibody and incubated for 30 minutes at 37â„ƒ. The tissue section was developed using Streptavidin-Biotin-Complex (SABC)(Catalog # SA1022) with DAB as the chromogen.



#### Immunohistochemistry

**Image 3.** IHC analysis of MED15 using anti-MED15 antibody .MED15 was detected in paraffin-embedded section of human placenta tissue. Heat mediated antigen retrieval was performed in citrate buffer (pH6, epitope retrieval solution) for 20 mins. The tissue section was blocked with 10% goat serum. The tissue section was then incubated with 1ug/ml rabbit anti-MED15 Antibody overnight at 4°C. Biotinylated goat anti-rabbit IgG was used as secondary antibody and incubated for 30 minutes at 37°C. The tissue section was developed using Streptavidin-Biotin-Complex (SABC)(Catalog # SA1022) with DAB as the chromogen.

Please check the [product details page](#) for more images. Overall 6 images are available for ABIN5519035.