

Datasheet for ABIN5519056  
**anti-RBP4 antibody (AA 19-201)**



[Go to Product page](#)

5 Images

## Overview

Quantity:	100 µg
Target:	RBP4
Binding Specificity:	AA 19-201
Reactivity:	Human, Mouse, Rat
Host:	Rabbit
Clonality:	Polyclonal
Conjugate:	This RBP4 antibody is un-conjugated
Application:	Western Blotting (WB), Immunohistochemistry (Paraffin-embedded Sections) (IHC (p))

## Product Details

Purpose:	Rabbit IgG polyclonal antibody for RBP4 detection. Tested with WB, IHC-P, ELISA(Cap) in Human,Mouse,Rat.
Immunogen:	E. coli-derived mouse RBP4 recombinant protein (Position: E19-L201).
Isotype:	IgG
Cross-Reactivity (Details):	No cross reactivity with other proteins.
Characteristics:	<p>Rabbit IgG polyclonal antibody for RBP4 detection. Tested with WB, IHC-P, ELISA(Cap) in Human,Mouse,Rat.</p> <p>Gene Name: retinol binding protein 4, plasma</p> <p>Protein Name: Retinol-binding protein 4</p>
Purification:	Immunogen affinity purified.

## Target Details

Target:	RBP4
Alternative Name:	Rbp4 ( <a href="#">RBP4 Products</a> )
Background:	<p>RBP4 is also known as RDCCAS. This protein belongs to the lipocalin family and is the specific carrier for retinol (vitamin A alcohol) in the blood. It delivers retinol from the liver stores to the peripheral tissues. In plasma, the RBP-retinol complex interacts with transthyretin which prevents its loss by filtration through the kidney glomeruli. A deficiency of vitamin A blocks secretion of the binding protein posttranslationally and results in defective delivery and supply to the epidermal cells.</p> <p>Synonyms: Retinol-binding protein 4, Plasma retinol-binding protein, PRBP, RBP, Rbp4</p>
Gene ID:	19662
UniProt:	<a href="#">Q00724</a>
Pathways:	<a href="#">Regulatory RNA Pathways</a> , <a href="#">Positive Regulation of Peptide Hormone Secretion</a> , <a href="#">Carbohydrate Homeostasis</a> , <a href="#">Production of Molecular Mediator of Immune Response</a>

## Application Details

Application Notes:	Notes: Tested Species: Species with positive results. Other applications have not been tested. Optimal dilutions should be determined by end users.
Comment:	Boster recommends Enhanced Chemiluminescent Kit with anti-Rabbit IgG (ABIN921124) for Western blot, and HRP Conjugated anti-Rabbit IgG Super Vision Assay Kit (SV0002-1) for IHC(P).
Restrictions:	For Research Use only

## Handling

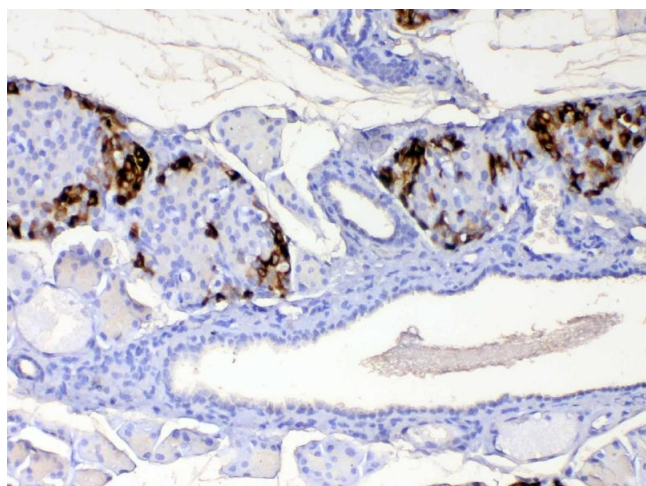
Format:	Lyophilized
Reconstitution:	Add 0.2 mL of distilled water will yield a concentration of 500 µg/mL.
Concentration:	500 µg/mL
Buffer:	Each vial contains 5 mg BSA, 0.9 mg NaCl, 0.2 mg Na2HPO4, 0.05 mg Sodium azide.
Preservative:	Sodium azide
Precaution of Use:	This product contains Sodium azide: a POISONOUS AND HAZARDOUS SUBSTANCE which should be handled by trained staff only.

## Handling

Storage: 4 °C, -20 °C

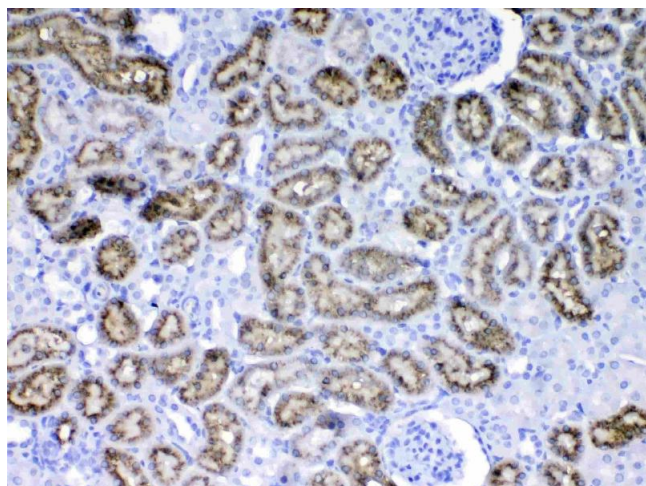
Storage Comment: At -20°C for one year. After reconstitution, at 4°C for one month.  
It can also be aliquotted and stored frozen at -20 °C for a longer time. Avoid repeated freezing and thawing.

## Images



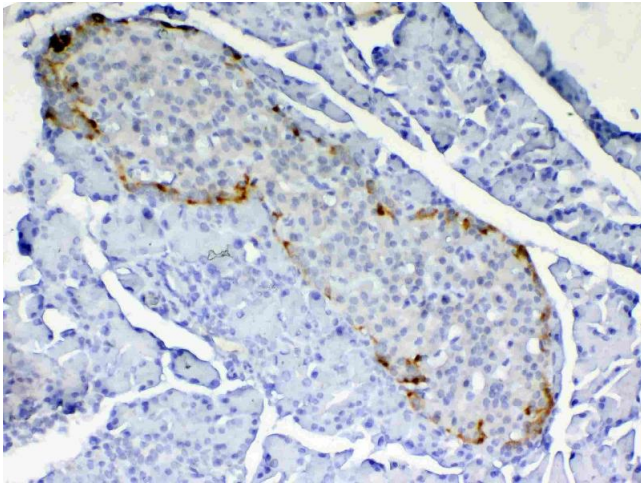
### Immunohistochemistry

**Image 1.** IHC analysis of RBP4 using anti-RBP4 antibody .RBP4 was detected in paraffin-embedded section of mouse pancreas tissue. Heat mediated antigen retrieval was performed in citrate buffer (pH6, epitope retrieval solution) for 20 mins. The tissue section was blocked with 10% goat serum. The tissue section was then incubated with 1ug/ml rabbit anti-RBP4 Antibody overnight at 4â„ƒ. Biotinylated goat anti-rabbit IgG was used as secondary antibody and incubated for 30 minutes at 37â„ƒ. The tissue section was developed using Streptavidin-Biotin-Complex (SABC)(Catalog # SA1022) with DAB as the chromogen.



### Immunohistochemistry

**Image 2.** IHC analysis of RBP4 using anti-RBP4 antibody .RBP4 was detected in paraffin-embedded section of rat kidney tissue. Heat mediated antigen retrieval was performed in citrate buffer (pH6, epitope retrieval solution) for 20 mins. The tissue section was blocked with 10% goat serum. The tissue section was then incubated with 1ug/ml rabbit anti-RBP4 Antibody overnight at 4â„ƒ. Biotinylated goat anti-rabbit IgG was used as secondary antibody and incubated for 30 minutes at 37â„ƒ. The tissue section was developed using Streptavidin-Biotin-Complex (SABC)(Catalog # SA1022) with DAB as the chromogen.



### Immunohistochemistry

**Image 3.** IHC analysis of RBP4 using anti-RBP4 antibody .RBP4 was detected in paraffin-embedded section of rat pancreas tissue. Heat mediated antigen retrieval was performed in citrate buffer (pH6, epitope retrieval solution) for 20 mins. The tissue section was blocked with 10% goat serum. The tissue section was then incubated with 1ug/ml rabbit anti-RBP4 Antibody overnight at 4°C. Biotinylated goat anti-rabbit IgG was used as secondary antibody and incubated for 30 minutes at 37°C. The tissue section was developed using Streptavidin-Biotin-Complex (SABC)(Catalog # SA1022) with DAB as the chromogen.

Please check the [product details page](#) for more images. Overall 5 images are available for ABIN5519056.