

Datasheet for ABIN5519057
anti-Relaxin 1 antibody



[Go to Product page](#)

4 Images

Overview

Quantity:	100 µg
Target:	Relaxin 1 (RLN1)
Reactivity:	Human, Rat
Host:	Rabbit
Clonality:	Polyclonal
Conjugate:	This Relaxin 1 antibody is un-conjugated
Application:	Western Blotting (WB), Immunohistochemistry (Paraffin-embedded Sections) (IHC (p))

Product Details

Purpose:	Rabbit IgG polyclonal antibody for Relaxin 1 detection. Tested with WB, IHC-P in Human,Rat.
Immunogen:	A synthetic peptide corresponding to a sequence of human Relaxin 1 (VAAKWKDDVIKLCGRELVRAQIAICGMSTWS).
Sequence:	VAAKWKDDVI KLCGRELVRA QIAICGMSTW S
Isotype:	IgG
Cross-Reactivity (Details):	No cross reactivity with other proteins.
Characteristics:	Rabbit IgG polyclonal antibody for Relaxin 1 detection. Tested with WB, IHC-P in Human,Rat. Gene Name: relaxin 1 Protein Name: Prorelaxin H1
Purification:	Immunogen affinity purified.

Target Details

Target:	Relaxin 1 (RLN1)
Alternative Name:	RLN1 (RLN1 Products)
Background:	<p>Relaxin 1 is a member of relaxin-like peptide family. Relaxin gene maps to human chromosome 19 near D19Mit23. Relaxin is a peptide hormone produced by the corpora lutea of ovaries during pregnancy in many mammalian species, including man. Relaxin widens the pubic bone and facilitates labor, it also softens the cervix (cervical ripening), and relaxes the uterine musculature. However, its significance may reach much further. Relaxin affects collagen metabolism, inhibiting collagen synthesis and enhancing its breakdown by increasing matrix metalloproteinases. It also enhances angiogenesis and is a potent renal vasodilator.</p> <p>Synonyms: Prorelaxin H1, Relaxin B chain, Relaxin A chain, RLN1</p>
Gene ID:	6013
UniProt:	P04808

Application Details

Application Notes:	Notes: Tested Species: Species with positive results. Other applications have not been tested. Optimal dilutions should be determined by end users.
Comment:	Boster recommends Enhanced Chemiluminescent Kit with anti-Rabbit IgG (ABIN921124) for Western blot, and HRP Conjugated anti-Rabbit IgG Super Vision Assay Kit (SV0002-1) for IHC(P).
Restrictions:	For Research Use only

Handling

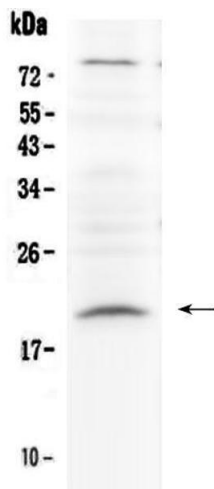
Format:	Lyophilized
Reconstitution:	Add 0.2 mL of distilled water will yield a concentration of 500 µg/mL.
Concentration:	500 µg/mL
Buffer:	Each vial contains 5 mg BSA, 0.9 mg NaCl, 0.2 mg Na2HPO4, 0.05 mg Sodium azide.
Preservative:	Sodium azide
Precaution of Use:	This product contains Sodium azide: a POISONOUS AND HAZARDOUS SUBSTANCE which should be handled by trained staff only.
Storage:	4 °C, -20 °C

Handling

Storage Comment: At -20°C for one year. After reconstitution, at 4°C for one month.

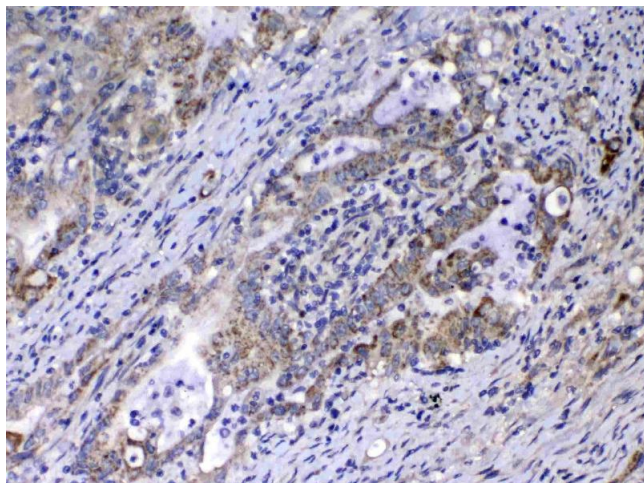
It can also be aliquotted and stored frozen at -20 °C for a longer time. Avoid repeated freezing and thawing.

Images



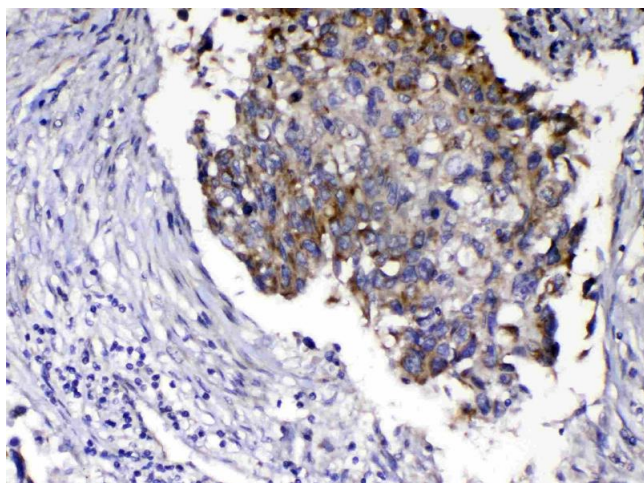
Western Blotting

Image 1. Western blot analysis of Relaxin 1 using anti-Relaxin 1 antibody . Electrophoresis was performed on a 5-20% SDS-PAGE gel at 70V (Stacking gel) / 90V (Resolving gel) for 2-3 hours. The sample well of each Lane was loaded with 50ug of sample under reducing conditions. Lane 1: rat PC-12 whole cell lysates. After Electrophoresis, proteins were transferred to a Nitrocellulose membrane at 150mA for 50-90 minutes. Blocked the membrane with 5% Non-fat Milk/ TBS for 1.5 hour at RT. The membrane was incubated with rabbit anti-Relaxin 1 antigen affinity purified polyclonal antibody (Catalog #) at 0.5 ug/mL overnight at 4°C, then washed with TBS-0.1%Tween 3 times with 5 minutes each and probed with a goat anti-rabbit IgG-HRP secondary antibody at a dilution of 1:10000 for 1.5 hour at RT. The signal is developed using an Enhanced Chemiluminescent detection (ECL) kit (Catalog # EK1002) with Tanon 5200 system. A specific band was detected for Relaxin 1 at approximately 21KD. The expected band size for Relaxin 1 is at 21KD.



Immunohistochemistry

Image 2. IHC analysis of Relaxin 1 using anti-Relaxin 1 antibody. Relaxin 1 was detected in paraffin-embedded section of human colon cancer tissue. Heat mediated antigen retrieval was performed in citrate buffer (pH6, epitope retrieval solution) for 20 mins. The tissue section was blocked with 10% goat serum. The tissue section was then incubated with 1ug/ml rabbit anti-Relaxin 1 Antibody overnight at 4°C. Biotinylated goat anti-rabbit IgG was used as secondary antibody and incubated for 30 minutes at 37°C. The tissue section was developed using Streptavidin-Biotin-Complex (SABC)(Catalog # SA1022) with DAB as the chromogen.



Western Blotting

Image 3. IHC analysis of Relaxin 1 using anti-Relaxin 1 antibody. Relaxin 1 was detected in paraffin-embedded section of human lung cancer tissue. Heat mediated antigen retrieval was performed in citrate buffer (pH6, epitope retrieval solution) for 20 mins. The tissue section was blocked with 10% goat serum. The tissue section was then incubated with 1ug/ml rabbit anti-Relaxin 1 Antibody overnight at 4°C. Biotinylated goat anti-rabbit IgG was used as secondary antibody and incubated for 30 minutes at 37°C. The tissue section was developed using Streptavidin-Biotin-Complex (SABC)(Catalog # SA1022) with DAB as the chromogen.

Please check the [product details page](#) for more images. Overall 4 images are available for ABIN5519057.