



[Go to Product page](#)

Datasheet for ABIN5519991

Histone H1 ELISA Kit

1 Image

Overview

Quantity:	96 tests
Target:	Histone H1
Reactivity:	Human
Method Type:	Sandwich ELISA
Detection Range:	78.13 pg/mL - 5000 pg/mL
Minimum Detection Limit:	78.13 pg/mL
Application:	ELISA

Product Details

Purpose:	For quantitative detection in serum, plasma, tissue homogenates and other biological fluids.
Sample Type:	Plasma, Serum, Tissue Homogenate
Analytical Method:	Quantitative
Detection Method:	Colorimetric
Sensitivity:	0.188 ng/mL
Components:	<ul style="list-style-type: none">- ELISA Microplate- Lyophilized Standard- Sample / Standard Dilution Buffer- Biotin-labeled Antibody (Concentrated)- Antibody Dilution Buffer- HRP-Streptavidin Conjugate(SABC)- SABC Dilution Buffer

Product Details

- TMB Substrate
- Stop Solution
- Wash Buffer (25X)
- Plate Sealer
- Product Description

- Material not included:
- Microplate reader (wavelength: 450nm)
 - 37 °C incubator
 - Automated plate washer
 - Precision single and multi-channel pipette and disposable tips
 - Clean tubes and Eppendorf tubes
 - Deionized or distilled water

Target Details

Target: Histone H1

Abstract: [Histone H1 Products](#)

Application Details

Application Notes: Optimal working dilution should be determined by the investigator.

Comment: Sandwich ELISA, Double Antibody

Sample Volume: 100 µL

Plate: Pre-coated

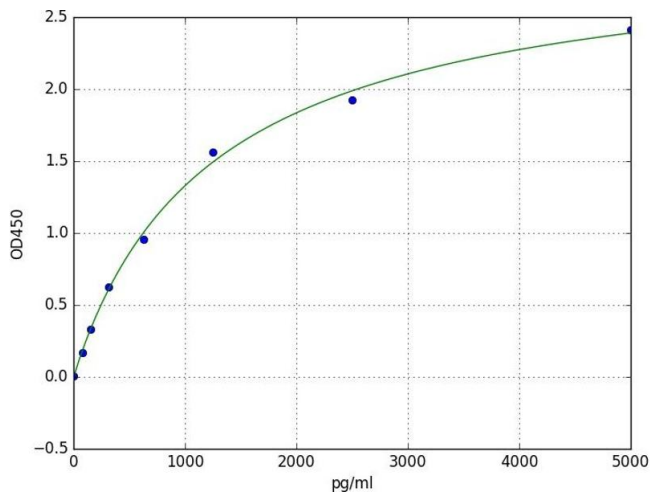
Restrictions: For Research Use only

Handling

Storage: 4 °C

Storage Comment: 4 °C for 6 months

Expiry Date: 6 months



ELISA

Image 1. A typical standard curve