

Datasheet for ABIN5520071

CREB1 ELISA Kit



[Go to Product page](#)

1 Image

Overview

Quantity:	96 tests
Target:	CREB1
Reactivity:	Human
Method Type:	Sandwich ELISA
Detection Range:	0.313 ng/mL - 20 ng/mL
Minimum Detection Limit:	0.313 ng/mL
Application:	ELISA

Product Details

Purpose:	For quantitative detection of CREB in serum, plasma, tissue homogenates.
Sample Type:	Plasma, Serum, Tissue Homogenate
Analytical Method:	Quantitative
Detection Method:	Colorimetric
Specificity:	This assay has high sensitivity and excellent specificity for detection of CREB. No significant cross-reactivity or interference between CREB and analogues was observed. Note: Limited by current skills and knowledge, it is difficult for us to complete the cross-reactivity detection between CREB and all the analogues, therefore, cross reaction may still exist.
Sensitivity:	0.188 ng/mL
Components:	<ul style="list-style-type: none"> - ELISA Microplate - Lyophilized Standard - Sample / Standard Dilution Buffer

Product Details

- Biotin-labeled Antibody (Concentrated)
- Antibody Dilution Buffer
- HRP-Streptavidin Conjugate(SABC)
- SABC Dilution Buffer
- TMB Substrate
- Stop Solution
- Wash Buffer (25X)
- Plate Sealer
- Product Description

Target Details

Target:	CREB1
Alternative Name:	CREB (CREB1 Products)
Background:	CREB/active transcription factor CREB/cAMP responsive element binding protein 1/cAMP-response element-binding protein-1/cAMP-responsive element-binding protein 1/CREB-1/cyclic AMP-responsive element-binding protein 1/MGC9284/transactivator protein
Pathways:	TLR Signaling , Fc-epsilon Receptor Signaling Pathway , EGFR Signaling Pathway , Neurotrophin Signaling Pathway , Thyroid Hormone Synthesis , Activation of Innate immune Response , Myometrial Relaxation and Contraction , Regulation of Cell Size , Toll-Like Receptors Cascades , G-protein mediated Events , Interaction of EGFR with phospholipase C-gamma , Positive Regulation of fat Cell Differentiation

Application Details

Application Notes:	Optimal working dilution should be determined by the investigator.
Comment:	Sandwich ELISA, Double Antibody
Sample Volume:	100 µL
Plate:	Pre-coated
Restrictions:	For Research Use only

Handling

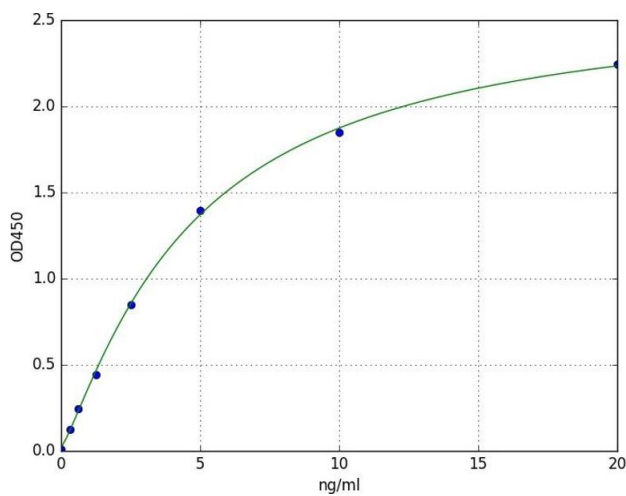
Storage:	4 °C
----------	------

Handling

- Storage Comment:
1. For unopened kit: All the reagents should be kept according to the labels on vials. The Reference Standard and the 96-well stripe plate should be stored at -20 °C upon receipt while the other reagents should be stored at 4 °C.
 2. For used kit: When the kit is used, the remaining reagents need to be stored according to the above storage condition. Besides, please return the unused wells to the foil pouch containing the desiccant pack, and zip-seal the foil pouch.

Expiry Date: 6 months

Images



ELISA

Image 1. A typical standard curve