

Datasheet for ABIN5520073
CREB1 ELISA Kit



[Go to Product page](#)

1 Image

Overview

Quantity:	96 tests
Target:	CREB1
Reactivity:	Rat
Method Type:	Sandwich ELISA
Detection Range:	0.31 pmol/mL - 20 pmol/mL
Minimum Detection Limit:	0.31 pmol/mL
Application:	ELISA

Product Details

Purpose:	For quantitative detection in serum, plasma, tissue homogenates and other biological fluids.
Sample Type:	Plasma, Serum, Tissue Homogenate
Analytical Method:	Quantitative
Detection Method:	Colorimetric
Specificity:	CREB/active transcription factor CREB/cAMP responsive element binding protein 1/cAMP-response element-binding protein-1/cAMP-responsive element-binding protein 1/CREB-1/cyclic AMP-responsive element-binding protein 1/MGC9284/transactivator protein
Sensitivity:	0.188 pM/mL
Components:	<ul style="list-style-type: none"> - ELISA Microplate - Lyophilized Standard - Sample / Standard Dilution Buffer - Biotin-labeled Antibody (Concentrated)

Product Details

- Antibody Dilution Buffer
- HRP-Streptavidin Conjugate(SABC)
- SABC Dilution Buffer
- TMB Substrate
- Stop Solution
- Wash Buffer (25X)
- Plate Sealer
- Product Description

Target Details

Target:	CREB1
Alternative Name:	CREB (CREB1 Products)
Background:	CREB/active transcription factor CREB/cAMP responsive element binding protein 1/cAMP-response element-binding protein-1/cAMP-responsive element-binding protein 1/CREB-1/cyclic AMP-responsive element-binding protein 1/MGC9284/transactivator protein
UniProt:	P15337
Pathways:	TLR Signaling , Fc-epsilon Receptor Signaling Pathway , EGFR Signaling Pathway , Neurotrophin Signaling Pathway , Thyroid Hormone Synthesis , Activation of Innate immune Response , Myometrial Relaxation and Contraction , Regulation of Cell Size , Toll-Like Receptors Cascades , G-protein mediated Events , Interaction of EGFR with phospholipase C-gamma , Positive Regulation of fat Cell Differentiation

Application Details

Application Notes:	Optimal working dilution should be determined by the investigator.
Comment:	Sandwich ELISA, Double Antibody
Sample Volume:	100 µL
Plate:	Pre-coated
Restrictions:	For Research Use only

Handling

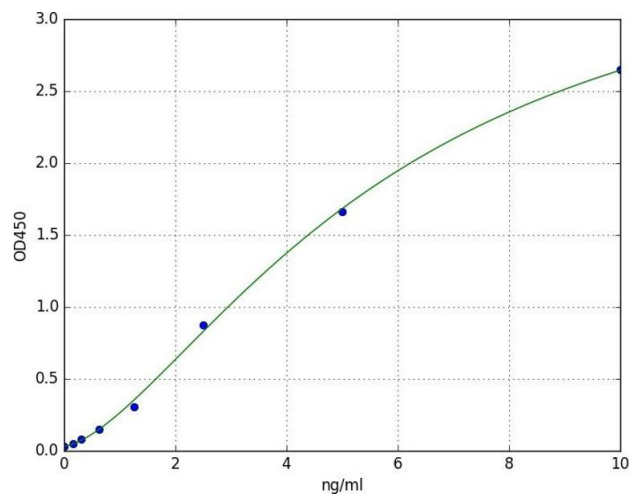
Storage:	4 °C
----------	------

Handling

Storage Comment: 4 °C for 6 months

Expiry Date: 6 months

Images



ELISA

Image 1. A typical standard curve