

Datasheet for ABIN5520752 **GDF15 ELISA Kit**

1 Image



[Go to Product page](#)

Overview

Quantity:	96 tests
Target:	GDF15
Reactivity:	Human
Method Type:	Sandwich ELISA
Detection Range:	23.438 pg/mL - 1500 pg/mL
Minimum Detection Limit:	23.438 pg/mL
Application:	ELISA

Product Details

Purpose:	For quantitative detection of GDF15 in serum, plasma, tissue homogenates.
Sample Type:	Plasma, Serum, Tissue Homogenate
Analytical Method:	Quantitative
Detection Method:	Colorimetric
Specificity:	This assay has high sensitivity and excellent specificity for detection of GDF15. No significant cross-reactivity or interference between GDF15 and analogues was observed. Note: Limited by current skills and knowledge, it is difficult for us to complete the cross-reactivity detection between GDF15 and all the analogues, therefore, cross reaction may still exist.
Sensitivity:	14.063 pg/mL
Components:	<ul style="list-style-type: none">- ELISA Microplate- Lyophilized Standard- Sample / Standard Dilution Buffer

Product Details

- Biotin-labeled Antibody (Concentrated)
- Antibody Dilution Buffer
- HRP-Streptavidin Conjugate(SABC)
- SABC Dilution Buffer
- TMB Substrate
- Stop Solution
- Wash Buffer (25X)
- Plate Sealer
- Product Description

Target Details

Target:	GDF15
Alternative Name:	GDF15 (GDF15 Products)
Background:	GDF15/GDF-15/MIC-1/MIC1/NAG-1/PDF/PLAB/PTGFB/TGF-PL
UniProt:	Q99988
Pathways:	SARS-CoV-2 Protein Interactome

Application Details

Application Notes:	Optimal working dilution should be determined by the investigator.
Comment:	Sandwich ELISA, Double Antibody
Sample Volume:	100 µL
Plate:	Pre-coated
Restrictions:	For Research Use only

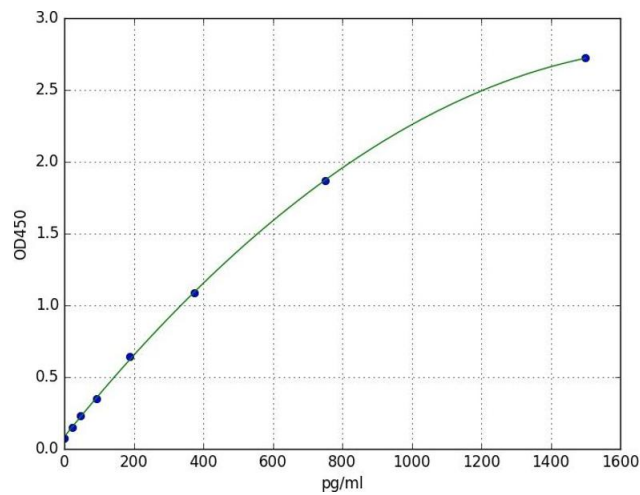
Handling

Storage:	4 °C
Storage Comment:	<ol style="list-style-type: none">1. For unopened kit: All the reagents should be kept according to the labels on vials. The Reference Standard and the 96-well stripe plate should be stored at -20 °C upon receipt while the other reagents should be stored at 4 °C.2. For used kit: When the kit is used, the remaining reagents need to be stored according to the above storage condition. Besides, please return the unused wells to the foil pouch containing the desiccant pack, and zip-seal the foil pouch.

Handling

Expiry Date: 6 months

Images



ELISA

Image 1. A typical standard curve