

Datasheet for ABIN5521040

**Klotho ELISA Kit****1** Image[Go to Product page](#)

## Overview

|                          |                         |
|--------------------------|-------------------------|
| Quantity:                | 96 tests                |
| Target:                  | Klotho (KL)             |
| Reactivity:              | Human                   |
| Method Type:             | Sandwich ELISA          |
| Detection Range:         | 7.813 pg/mL - 500 pg/mL |
| Minimum Detection Limit: | 7.813 pg/mL             |
| Application:             | ELISA                   |

## Product Details

|                    |   |
|--------------------|---|
| Purpose:           | For quantitative detection of KL in serum, plasma, tissue homogenates.  |
| Sample Type:       | Plasma, Serum, Tissue Homogenate  |
| Analytical Method: | Quantitative  |
| Detection Method:  | Colorimetric  |
| Specificity:       | This assay has high sensitivity and excellent specificity for detection of KL. No significant cross-reactivity or interference between KL and analogues was observed. Note: Limited by current skills and knowledge, it is difficult for us to complete the cross-reactivity detection between KL and all the analogues, therefore, cross reaction may still exist. |
| Sensitivity:       | 4.688 pg/mL   |
| Components:        | <ul style="list-style-type: none"><li>- ELISA Microplate</li><li>- Lyophilized Standard</li><li>- Sample / Standard Dilution Buffer</li></ul>   |

## Product Details

- Biotin-labeled Antibody (Concentrated)
- Antibody Dilution Buffer
- HRP-Streptavidin Conjugate(SABC)
- SABC Dilution Buffer
- TMB Substrate
- Stop Solution
- Wash Buffer (25X)
- Plate Sealer
- Product Description

## Target Details

|                   |  |
|-------------------|--|
| Target:           | Klotho (KL)  |
| Alternative Name: | Klotho ( <a href="#">KL Products</a> )   |
| Background:       | KL/klotho/KLOTHO   |
| UniProt:          | <a href="#">Q9UEF7</a>   |
| Pathways:         | <a href="#">Fc-epsilon Receptor Signaling Pathway</a> , <a href="#">EGFR Signaling Pathway</a> , <a href="#">Neurotrophin Signaling Pathway</a> , <a href="#">Hormone Activity</a> , <a href="#">Growth Factor Binding</a> |

## Application Details

|                    |  |
|--------------------|--|
| Application Notes: | Optimal working dilution should be determined by the investigator. |
| Comment:           | Sandwich ELISA, Double Antibody                                    |
| Sample Volume:     | 100 µL   |
| Plate:             | Pre-coated   |
| Restrictions:      | For Research Use only  |

## Handling

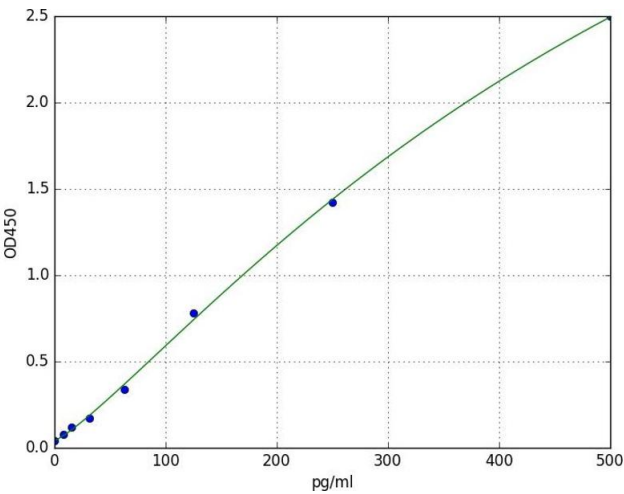
|                  |  |
|------------------|--|
| Storage:         | 4 °C   |
| Storage Comment: | <ol style="list-style-type: none"><li>1. For unopened kit: All the reagents should be kept according to the labels on vials. The Reference Standard and the 96-well stripe plate should be stored at -20 °C upon receipt while the other reagents should be stored at 4 °C.</li><li>2. For used kit: When the kit is used, the remaining reagents need to be stored according to the above storage condition. Besides, please return the unused wells to the foil pouch containing</li></ol> |

Handling

the desiccant pack, and zip-seal the foil pouch.

Expiry Date: 6 months

Images



**ELISA**

**Image 1.** A typical standard curve