

Datasheet for ABIN5522087 hCG ELISA Kit



[Go to Product page](#)

1 Image

Overview

Quantity:	96 tests
Target:	hCG
Reactivity:	Human
Method Type:	Sandwich ELISA
Detection Range:	7.813 mIU/mL - 500 mIU/mL
Minimum Detection Limit:	7.813 mIU/mL
Application:	ELISA

Product Details

Purpose:	For quantitative detection of HCG in serum, plasma, tissue homogenates.
Sample Type:	Plasma, Serum, Tissue Homogenate
Analytical Method:	Quantitative
Detection Method:	Colorimetric
Specificity:	This assay has high sensitivity and excellent specificity for detection of HCG. No significant cross-reactivity or interference between HCG and analogues was observed. Note: Limited by current skills and knowledge, it is difficult for us to complete the cross-reactivity detection between HCG and all the analogues, therefore, cross reaction may still exist.
Sensitivity:	4.688 mIU/mL
Components:	<ul style="list-style-type: none">- ELISA Microplate- Lyophilized Standard- Sample / Standard Dilution Buffer

Product Details

- Biotin-labeled Antibody (Concentrated)
- Antibody Dilution Buffer
- HRP-Streptavidin Conjugate(SABC)
- SABC Dilution Buffer
- TMB Substrate
- Stop Solution
- Wash Buffer (25X)
- Plate Sealer
- Product Description

Target Details

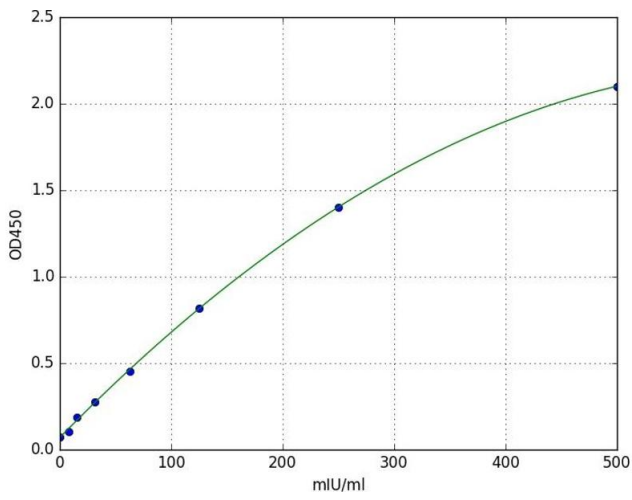
Target:	hCG
Alternative Name:	HCG (hCG Products)
Target Type:	Hormone
Background:	HCG-H(Hyperglycosylated Chorionic Gonadotropin)

Application Details

Application Notes:	Optimal working dilution should be determined by the investigator.
Comment:	Sandwich ELISA, Double Antibody
Sample Volume:	100 µL
Plate:	Pre-coated
Restrictions:	For Research Use only

Handling

Storage:	4 °C
Storage Comment:	<ol style="list-style-type: none">1. For unopened kit: All the reagents should be kept according to the labels on vials. The Reference Standard and the 96-well stripe plate should be stored at -20 °C upon receipt while the other reagents should be stored at 4 °C.2. For used kit: When the kit is used, the remaining reagents need to be stored according to the above storage condition. Besides, please return the unused wells to the foil pouch containing the desiccant pack, and zip-seal the foil pouch.
Expiry Date:	6 months



ELISA

Image 1. A typical standard curve