



[Go to Product page](#)

Datasheet for ABIN5522139

## Indole 3 Acetic Acid ELISA Kit

### 1 Image

#### Overview

Quantity:	96 tests
Target:	Indole 3 Acetic Acid (IAA)
Reactivity:	Mouse
Method Type:	Sandwich ELISA
Detection Range:	0.78 ng/mL - 50 ng/mL
Minimum Detection Limit:	0.78 ng/mL
Application:	ELISA

#### Product Details

Purpose:	For quantitative detection in serum, plasma, tissue homogenates and other biological fluids.
Sample Type:	Plasma, Serum, Tissue Homogenate
Analytical Method:	Quantitative
Detection Method:	Colorimetric
Specificity:	IAA(Insulin Autoantibodies)
Sensitivity:	0.469 ng/mL
Components:	<ul style="list-style-type: none"><li>- ELISA Microplate</li><li>- Lyophilized Standard</li><li>- Sample / Standard Dilution Buffer</li><li>- Biotin-labeled Antibody (Concentrated)</li><li>- Antibody Dilution Buffer</li><li>- HRP-Streptavidin Conjugate(SABC)</li></ul>

## Product Details

---

- SABC Dilution Buffer
- TMB Substrate
- Stop Solution
- Wash Buffer (25X)
- Plate Sealer
- Product Description

Material not included:	- Microplate reader (wavelength: 450nm)
	- 37 °C incubator
	- Automated plate washer
	- Precision single and multi-channel pipette and disposable tips
	- Clean tubes and Eppendorf tubes
	- Deionized or distilled water

## Target Details

---

Target:	Indole 3 Acetic Acid (IAA)
Alternative Name:	IAA ( <a href="#">IAA Products</a> )
Target Type:	Chemical
Background:	IAA(Insulin Autoantibodies)

## Application Details

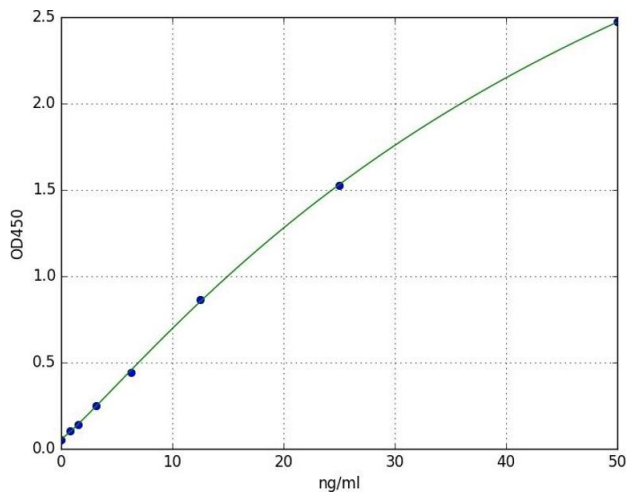
---

Application Notes:	Optimal working dilution should be determined by the investigator.
Comment:	Sandwich ELISA, Double Antigen
Sample Volume:	100 µL
Plate:	Pre-coated
Restrictions:	For Research Use only

## Handling

---

Storage:	4 °C
Storage Comment:	4 °C for 6 months
Expiry Date:	6 months



## ELISA

**Image 1.** A typical standard curve