

Datasheet for ABIN5522594
MECP2 ELISA Kit



[Go to Product page](#)

1 Image

Overview

Quantity:	96 tests
Target:	MECP2
Reactivity:	Mouse
Method Type:	Sandwich ELISA
Detection Range:	78.13 pg/mL - 5000 pg/mL
Minimum Detection Limit:	78.13 pg/mL
Application:	ELISA

Product Details

Purpose:	For quantitative detection in serum, plasma, tissue homogenates and other biological fluids.
Sample Type:	Plasma, Serum, Tissue Homogenate
Analytical Method:	Quantitative
Detection Method:	Colorimetric
Sensitivity:	46.875 pg/mL
Components:	<ul style="list-style-type: none">- ELISA Microplate- Lyophilized Standard- Sample / Standard Dilution Buffer- Biotin-labeled Antibody (Concentrated)- Antibody Dilution Buffer- HRP-Streptavidin Conjugate(SABC)- SABC Dilution Buffer

Product Details

- TMB Substrate
- Stop Solution
- Wash Buffer (25X)
- Plate Sealer
- Product Description

Target Details

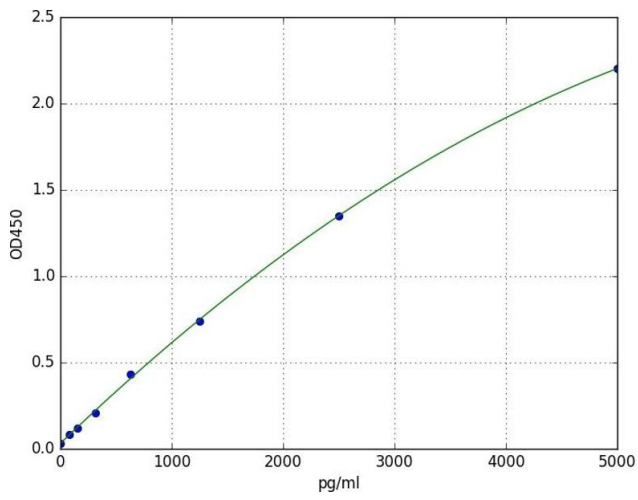
Target:	MECP2
Alternative Name:	Mecp2 (MECP2 Products)
UniProt:	Q9Z2D6
Pathways:	Inositol Metabolic Process , Chromatin Binding , Synaptic Membrane

Application Details

Application Notes:	Optimal working dilution should be determined by the investigator.
Comment:	Sandwich ELISA, Double Antibody
Sample Volume:	100 µL
Plate:	Pre-coated
Restrictions:	For Research Use only

Handling

Storage:	4 °C
Storage Comment:	4 °C for 6 months
Expiry Date:	6 months



ELISA

Image 1. A typical standard curve