



[Go to Product page](#)

Datasheet for ABIN5524043

Anti-Nuclear Antibody (ANA) ELISA Kit

1 Image

Overview

Quantity:	96 tests
Target:	Anti-Nuclear Antibody (ANA)
Reactivity:	Human
Method Type:	Sandwich ELISA
Detection Range:	1.56 ng/mL - 100 ng/mL
Minimum Detection Limit:	1.56 ng/mL
Application:	ELISA

Product Details

Purpose:	For quantitative detection in serum, plasma, tissue homogenates and other biological fluids.
Sample Type:	Plasma, Serum, Tissue Homogenate
Analytical Method:	Quantitative
Detection Method:	Colorimetric
Sensitivity:	0.938 ng/mL
Components:	<ul style="list-style-type: none">- ELISA Microplate- Lyophilized Standard- Sample / Standard Dilution Buffer- Biotin-labeled Antibody (Concentrated)- Antibody Dilution Buffer- HRP-Streptavidin Conjugate(SABC)- SABC Dilution Buffer

Product Details

- TMB Substrate
- Stop Solution
- Wash Buffer (25X)
- Plate Sealer
- Product Description

- Material not included:
- Microplate reader (wavelength: 450nm)
 - 37 °C incubator
 - Automated plate washer
 - Precision single and multi-channel pipette and disposable tips
 - Clean tubes and Eppendorf tubes
 - Deionized or distilled water

Target Details

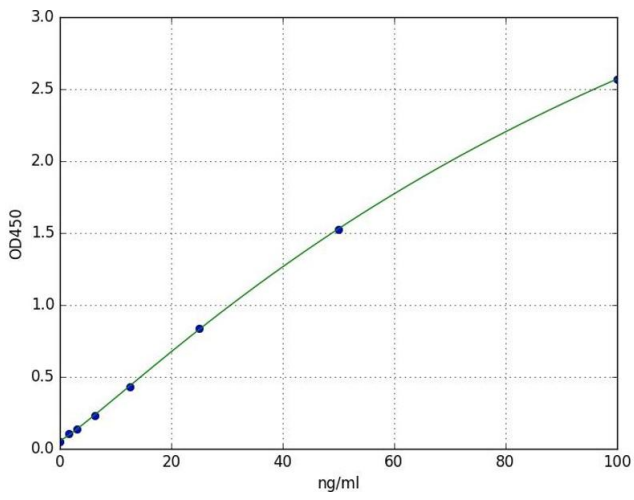
- Target: Anti-Nuclear Antibody (ANA)
- Alternative Name: anti-nuclear antibody ([ANA Products](#))
- Target Type: Antibody, Antibody

Application Details

- Application Notes: Optimal working dilution should be determined by the investigator.
- Comment: Sandwich ELISA, Double Antigen
- Sample Volume: 100 µL
- Plate: Pre-coated
- Restrictions: For Research Use only

Handling

- Storage: 4 °C
- Storage Comment: 4 °C for 6 months
- Expiry Date: 6 months



ELISA

Image 1. A typical standard curve