



[Go to Product page](#)

Datasheet for ABIN5524255

Very Low Density Lipoprotein (VLDL) ELISA Kit

1 Image

Overview

Quantity:	96 tests
Target:	Very Low Density Lipoprotein (VLDL)
Reactivity:	Chicken
Method Type:	Sandwich ELISA
Detection Range:	0.78 ng/mL - 50 ng/mL
Minimum Detection Limit:	0.78 ng/mL
Application:	ELISA

Product Details

Purpose:	For quantitative detection in serum, plasma, tissue homogenates and other biological fluids.
Sample Type:	Plasma, Serum, Tissue Homogenate
Analytical Method:	Quantitative
Detection Method:	Colorimetric
Specificity:	Very Low Density Lipoprotein
Sensitivity:	0.469 ng/mL
Components:	<ul style="list-style-type: none">- ELISA Microplate- Lyophilized Standard- Sample / Standard Dilution Buffer- Biotin-labeled Antibody (Concentrated)- Antibody Dilution Buffer- HRP-Streptavidin Conjugate(SABC)

Product Details

- SABC Dilution Buffer
- TMB Substrate
- Stop Solution
- Wash Buffer (25X)
- Plate Sealer
- Product Description

Material not included:	- Microplate reader (wavelength: 450nm)
	- 37 °C incubator
	- Automated plate washer
	- Precision single and multi-channel pipette and disposable tips
	- Clean tubes and Eppendorf tubes
	- Deionized or distilled water

Target Details

Target:	Very Low Density Lipoprotein (VLDL)
---------	-------------------------------------

Alternative Name:	VLDL (VLDL Products)
-------------------	--

Background:	Very Low Density Lipoprotein
-------------	------------------------------

Application Details

Application Notes:	Optimal working dilution should be determined by the investigator.
--------------------	--

Comment:	Sandwich ELISA, Double Antibody
----------	---------------------------------

Sample Volume:	100 µL
----------------	--------

Plate:	Pre-coated
--------	------------

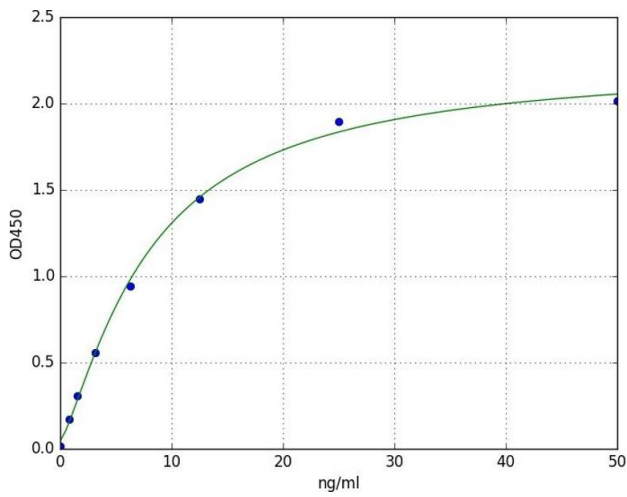
Restrictions:	For Research Use only
---------------	-----------------------

Handling

Storage:	4 °C
----------	------

Storage Comment:	4 °C for 6 months
------------------	-------------------

Expiry Date:	6 months
--------------	----------



ELISA

Image 1. A typical standard curve