

Datasheet for ABIN5524286

ENHO ELISA Kit**1** Image[Go to Product page](#)

Overview

Quantity:	96 tests
Target:	ENHO
Reactivity:	Human
Method Type:	Sandwich ELISA
Detection Range:	15.625 pg/mL - 1000 pg/mL
Minimum Detection Limit:	15.625 pg/mL
Application:	ELISA

Product Details

Purpose:	For quantitative detection of ENHO in serum, plasma, tissue homogenates.
Sample Type:	Plasma, Serum, Tissue Homogenate
Analytical Method:	Quantitative
Detection Method:	Colorimetric
Specificity:	This assay has high sensitivity and excellent specificity for detection of ENHO. No significant cross-reactivity or interference between ENHO and analogues was observed. Note: Limited by current skills and knowledge, it is difficult for us to complete the cross-reactivity detection between ENHO and all the analogues, therefore, cross reaction may still exist.
Sensitivity:	9.375 pg/mL
Components:	<ul style="list-style-type: none">- ELISA Microplate- Lyophilized Standard- Sample / Standard Dilution Buffer

Product Details

- Biotin-labeled Antibody (Concentrated)
- Antibody Dilution Buffer
- HRP-Streptavidin Conjugate(SABC)
- SABC Dilution Buffer
- TMB Substrate
- Stop Solution
- Wash Buffer (25X)
- Plate Sealer
- Product Description

Target Details

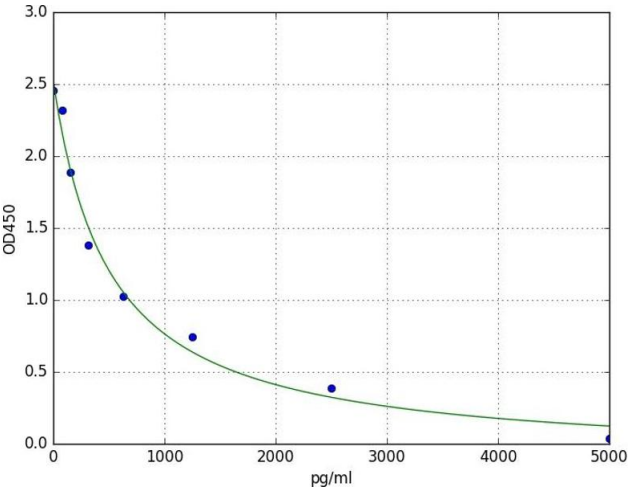
Target:	ENHO
Alternative Name:	ENHO (ENHO Products)
Background:	ENHO/Energy homeostasis-associated protein/Adropin
UniProt:	Q6UWT2

Application Details

Application Notes:	Optimal working dilution should be determined by the investigator.
Comment:	Competitive ELISA, Coated with Antigen
Sample Volume:	50 µL
Plate:	Pre-coated
Restrictions:	For Research Use only

Handling

Storage:	4 °C
Storage Comment:	<ol style="list-style-type: none">1. For unopened kit: All the reagents should be kept according to the labels on vials. The Reference Standard and the 96-well stripe plate should be stored at -20 °C upon receipt while the other reagents should be stored at 4 °C.2. For used kit: When the kit is used, the remaining reagents need to be stored according to the above storage condition. Besides, please return the unused wells to the foil pouch containing the desiccant pack, and zip-seal the foil pouch.
Expiry Date:	6 months



ELISA

Image 1. A typical standard curve