

Datasheet for ABIN5524661  
**LHB ELISA Kit**



[Go to Product page](#)

1 Image

## Overview

Quantity: 96 tests

Target: LHB

Reactivity: Rat

Method Type: Competition ELISA

Detection Range: 0.15 ng/mL - 10 ng/mL

Minimum Detection Limit: 0.15 ng/mL

Application: ELISA

## Product Details

Purpose: For quantitative detection in serum, plasma, tissue homogenates and other biological fluids.

Sample Type: Plasma, Serum, Tissue Homogenate

Analytical Method: Quantitative

Detection Method: Colorimetric

Specificity: Lhb/CGB4/LSH-B/Lutropin beta/CGB4/hLHB/interstitial cell stimulating hormone, beta chain/LSH-B/LSH-beta/luteinizing hormone beta polypeptide/luteinizing hormone beta subunit/lutropin beta chain/lutropin subunit beta

Sensitivity: 0.094 ng/mL

Components:

- ELISA Microplate
- Lyophilized Standard
- Sample / Standard Dilution Buffer
- Biotin-labeled Antibody (Concentrated)

## Product Details

---

- Antibody Dilution Buffer
- HRP-Streptavidin Conjugate(SABC)
- SABC Dilution Buffer
- TMB Substrate
- Stop Solution
- Wash Buffer (25X)
- Plate Sealer
- Product Description

## Target Details

---

Target:	LHB
Alternative Name:	Lhb ( <a href="#">LHB Products</a> )
Target Type:	Hormone
Background:	Lhb/CGB4/LSH-B/Lutropin beta/CGB4/hLHB/interstitial cell stimulating hormone, beta chain/LSH-B/LSH-beta/luteinizing hormone beta polypeptide/luteinizing hormone beta subunit/lutropin beta chain/lutropin subunit beta
UniProt:	<a href="#">P01230</a>
Pathways:	<a href="#">Metabolism of Steroid Hormones and Vitamin D</a> , <a href="#">Peptide Hormone Metabolism</a> , <a href="#">Hormone Activity</a> , <a href="#">C21-Steroid Hormone Metabolic Process</a>

## Application Details

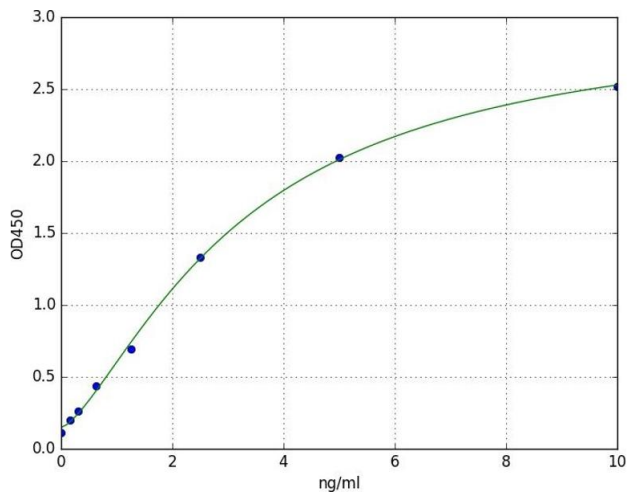
---

Application Notes:	Optimal working dilution should be determined by the investigator.
Comment:	Sandwich ELISA, Double Antibody
Sample Volume:	100 µL
Plate:	Pre-coated
Restrictions:	For Research Use only

## Handling

---

Storage:	4 °C
Storage Comment:	4 °C for 6 months
Expiry Date:	6 months



## ELISA

**Image 1.** A typical standard curve