

Datasheet for ABIN5524878

**EIF6 ELISA Kit****1** Image[Go to Product page](#)

## Overview

Quantity: 96 tests

Target: EIF6

Reactivity: Human

Method Type: Sandwich ELISA

Detection Range: 0.31 ng/mL - 20 ng/mL

Minimum Detection Limit: 0.31 ng/mL

Application: ELISA

## Product Details

Purpose: For quantitative detection in serum, plasma, tissue homogenates and other biological fluids.

Sample Type: Plasma, Serum, Tissue Homogenate

Analytical Method: Quantitative

Detection Method: Colorimetric

Sensitivity: 0.188 ng/mL

Components:

- ELISA Microplate
- Lyophilized Standard
- Sample / Standard Dilution Buffer
- Biotin-labeled Antibody (Concentrated)
- Antibody Dilution Buffer
- HRP-Streptavidin Conjugate(SABC)
- SABC Dilution Buffer

## Product Details

---

- TMB Substrate
- Stop Solution
- Wash Buffer (25X)
- Plate Sealer
- Product Description

## Target Details

---

Target:	EIF6
Alternative Name:	EIF6 ( <a href="#">EIF6 Products</a> )
UniProt:	<a href="#">O55135</a>
Pathways:	<a href="#">Ribonucleoprotein Complex Subunit Organization, Ribosome Assembly</a>

## Application Details

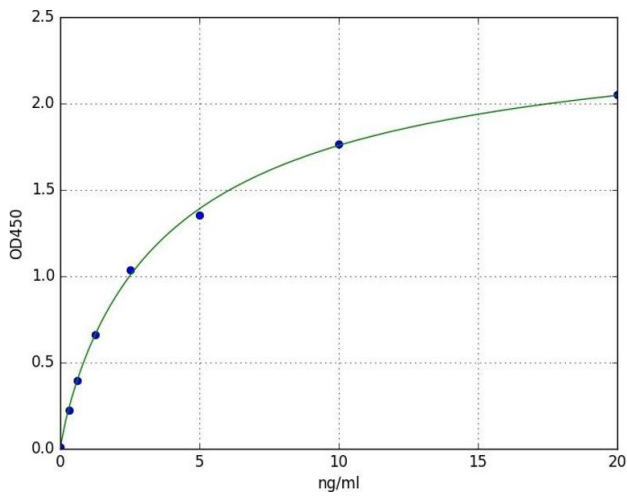
---

Application Notes:	Optimal working dilution should be determined by the investigator.
Comment:	Sandwich ELISA, Double Antibody
Sample Volume:	100 µL
Plate:	Pre-coated
Restrictions:	For Research Use only

## Handling

---

Storage:	4 °C
Storage Comment:	4 °C for 6 months
Expiry Date:	6 months



## ELISA

**Image 1.** A typical standard curve