

Datasheet for ABIN5525223

PCK1 ELISA Kit**1** Image[Go to Product page](#)

Overview

Quantity: 96 tests

Target: PCK1

Reactivity: Rat

Method Type: Sandwich ELISA

Detection Range: 0.15 ng/mL - 10 ng/mL

Minimum Detection Limit: 0.15 ng/mL

Application: ELISA

Product Details

Purpose: For quantitative detection in serum, plasma, tissue homogenates and other biological fluids.

Sample Type: Plasma, Serum, Tissue Homogenate

Analytical Method: Quantitative

Detection Method: Colorimetric

Specificity: PEPCK/PEPCK1/PEPCK-C/EC 4.1.1.32/MGC22652/PEPCK1/PEPCKC/PEPCK-CPEP
carboxykinase/phosphoenolpyruvate carboxykinase 1(soluble)/phosphoenolpyruvate
carboxykinase, cytosolic/phosphoenolpyruvate carboxykinase, cytosolic [GTP]/Phosphoenolpyruvate
carboxylase/p

Sensitivity: 0.094 ng/mL

Components:

- ELISA Microplate
- Lyophilized Standard
- Sample / Standard Dilution Buffer

Product Details

- Biotin-labeled Antibody (Concentrated)
- Antibody Dilution Buffer
- HRP-Streptavidin Conjugate(SABC)
- SABC Dilution Buffer
- TMB Substrate
- Stop Solution
- Wash Buffer (25X)
- Plate Sealer
- Product Description

Target Details

Target: PCK1

Alternative Name: [PEPCK \(PCK1 Products\)](#)

Background: PEPCK/PEPCK1/PEPCK-C/EC 4.1.1.32/MGC22652/PEPCK1/PEPCKC/PEPCK-CPEP carboxykinase/phosphoenolpyruvate carboxykinase 1(soluble)/phosphoenolpyruvate carboxykinase, cytosolic/phosphoenolpyruvate carboxykinase, cytosolic [GTP]/Phosphoenolpyruvate carboxylase/p

Pathways: [Positive Regulation of Peptide Hormone Secretion, Carbohydrate Homeostasis](#)

Application Details

Application Notes: Optimal working dilution should be determined by the investigator.

Comment: Sandwich ELISA, Double Antibody

Sample Volume: 100 µL

Plate: Pre-coated

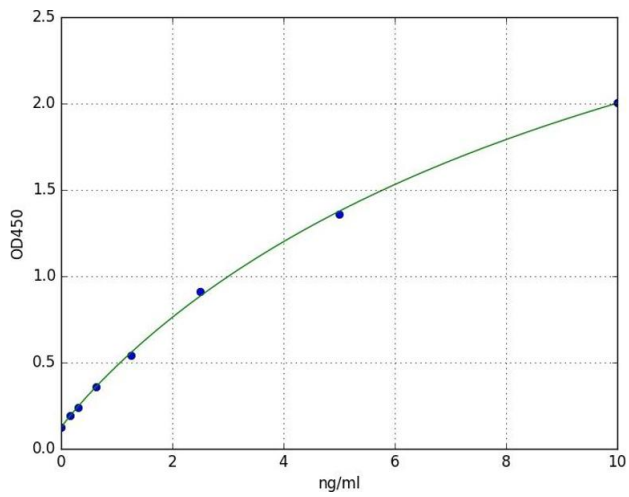
Restrictions: For Research Use only

Handling

Storage: 4 °C

Storage Comment: 4 °C for 6 months

Expiry Date: 6 months



ELISA

Image 1. A typical standard curve