

Datasheet for ABIN5525793

**COA6 ELISA Kit**[Go to Product page](#)**1** Image

## Overview

Quantity:	96 tests
Target:	COA6
Reactivity:	Human
Method Type:	Sandwich ELISA
Detection Range:	0.31 ng/mL - 20 ng/mL
Minimum Detection Limit:	0.31 ng/mL
Application:	ELISA

## Product Details

Purpose:	For quantitative detection in serum, plasma, tissue homogenates and other biological fluids.
Sample Type:	Plasma, Serum, Tissue Homogenate
Analytical Method:	Quantitative
Detection Method:	Colorimetric
Sensitivity:	0.188 ng/mL
Components:	<ul style="list-style-type: none"><li>- ELISA Microplate</li><li>- Lyophilized Standard</li><li>- Sample / Standard Dilution Buffer</li><li>- Biotin-labeled Antibody (Concentrated)</li><li>- Antibody Dilution Buffer</li><li>- HRP-Streptavidin Conjugate(SABC)</li><li>- SABC Dilution Buffer</li></ul>

## Product Details

---

- TMB Substrate
- Stop Solution
- Wash Buffer (25X)
- Plate Sealer
- Product Description

## Target Details

---

Target:	COA6
Alternative Name:	C1orf31 ( <a href="#">COA6 Products</a> )
UniProt:	<a href="#">Q5JTJ3</a>

## Application Details

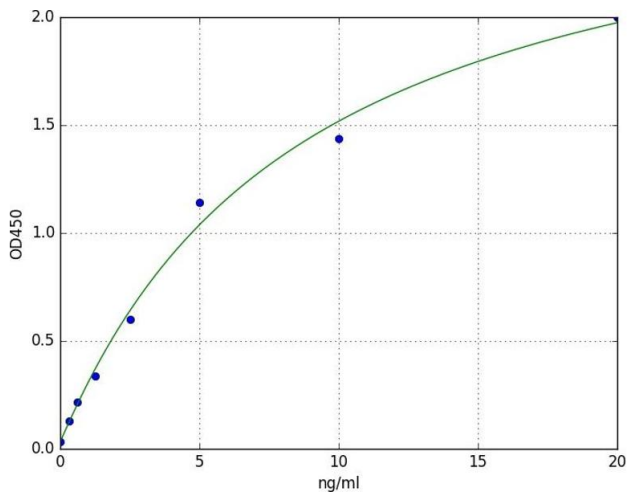
---

Application Notes:	Optimal working dilution should be determined by the investigator.
Comment:	Sandwich ELISA, Double Antibody
Sample Volume:	100 µL
Plate:	Pre-coated
Restrictions:	For Research Use only

## Handling

---

Storage:	4 °C
Storage Comment:	4 °C for 6 months
Expiry Date:	6 months



## ELISA

**Image 1.** A typical standard curve