

Datasheet for ABIN5526592

Glypican 3 Protein (GPC3) (AA 25-559) (His tag)[Go to Product page](#)**2** Images

Overview

Quantity:	100 µg
Target:	Glypican 3 (GPC3)
Protein Characteristics:	AA 25-559
Origin:	Cynomolgus
Source:	HEK-293 Cells
Protein Type:	Recombinant
Biological Activity:	Active
Purification tag / Conjugate:	This Glypican 3 protein is labelled with His tag.

Product Details

Sequence:	AA 25-559
Characteristics:	This protein carries a polyhistidine tag at the C-terminus. The protein has a calculated MW of 62.7 kDa. The protein migrates as 66-150 kDa, 40 kDa under reducing (R) condition (SDS-PAGE) due to Glycosylation.
Purity:	>85 % as determined by SDS-PAGE.
Endotoxin Level:	Less than 1.0 EU per µg by the LAL method.

Target Details

Target:	Glypican 3 (GPC3)
Alternative Name:	Glypican 3 (GPC3 Products)

Target Details

Background:	Glypican-3 (GPC3) is also known as Intestinal protein OCI-5, GTR2-2, MXR7, which belongs to the glypican family. Glypican 3 / GPC-3 is highly expressed in lung, liver and kidney. Glypican-3 inhibits the dipeptidyl peptidase activity of DPP4. Glypican-3 may be involved in the suppression/modulation of growth in the predominantly mesodermal tissues and organs, and also may play a role in the modulation of IGF2 interactions with its receptor and thereby modulate its function.
Molecular Weight:	38.1 kDa and 24.6 kDa
NCBI Accession:	XP_005594665
Pathways:	Glycosaminoglycan Metabolic Process

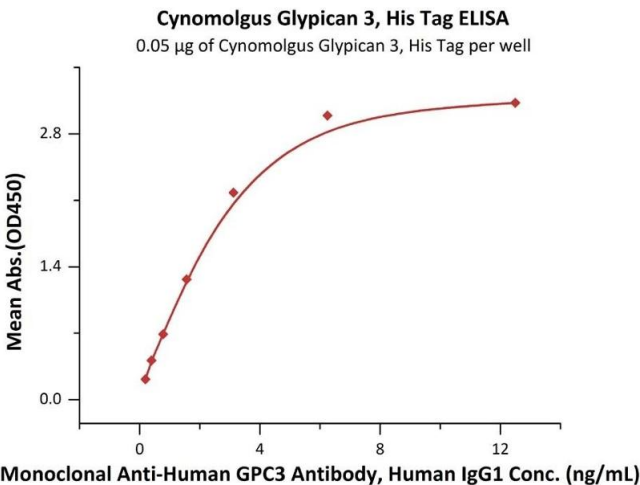
Application Details

Restrictions:	For Research Use only
---------------	-----------------------

Handling

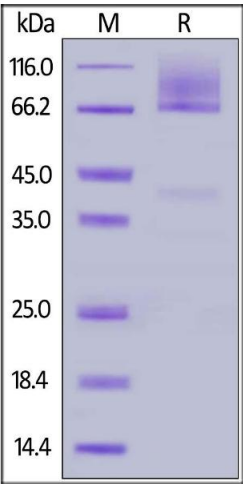
Format:	Lyophilized
Buffer:	PBS, pH 7.4
Handling Advice:	Please avoid repeated freeze-thaw cycles.
Storage:	-20 °C

Images



ELISA

Image 1. Immobilized Cynomolgus Glypican 3, His Tag (ABIN5526592,ABIN5526593) at 0.5 µg/mL (100 µL/well) can bind Monoclonal A GPC3 Antibody, Human IgG1 with a linear range of 0.2-3 ng/mL (QC tested).



SDS-PAGE

Image 2. Cynomolgus Glypican 3, His Tag on under reducing (R) condition. The gel was stained overnight with Coomassie Blue. The purity of the protein is greater than 85 % .