



[Go to Product page](#)

Datasheet for ABIN5526624

## LAG3 Protein (AA 23-450) (Fc Tag)

### 2 Images

#### Overview

Quantity:	100 µg
Target:	LAG3
Protein Characteristics:	AA 23-450
Origin:	Human
Source:	HEK-293 Cells
Protein Type:	Recombinant
Biological Activity:	Active
Purification tag / Conjugate:	This LAG3 protein is labelled with Fc Tag.

#### Product Details

Sequence:	AA 23-450
Characteristics:	This protein carries a human IgG1 Fc tag at the C-terminus. The protein has a calculated MW of 72.3 kDa. The protein migrates as 90-100 kDa under reducing (R) condition (SDS-PAGE) due to glycosylation.
Purity:	>95 % as determined by SDS-PAGE.
Endotoxin Level:	Less than 1.0 EU per µg by the LAL method.

#### Target Details

Target:	LAG3
Alternative Name:	LAG-3 ( <a href="#">LAG3 Products</a> )

## Target Details

**Background:** Lymphocyte activation gene 3 protein (LAG3) is also known as CD antigen CD223 and protein FDC, which belongs to immunoglobulin (Ig) superfamily and contains 4 extracellular Ig-like domains. The LAG3 gene contains 8 exons. The sequence data, exon/intron organization, and chromosomal localization all indicate a close relationship of LAG3 to CD4. LAG3 /CD223 involved in lymphocyte activation. LAG3 /CD223 binds to HLA class-II antigens.

**Molecular Weight:** 72.8 kDa

**NCBI Accession:** [NP\\_002277](#)

**Pathways:** [Regulation of Leukocyte Mediated Immunity](#), [Positive Regulation of Immune Effector Process](#), [Cancer Immune Checkpoints](#)

## Application Details

**Restrictions:** For Research Use only

## Handling

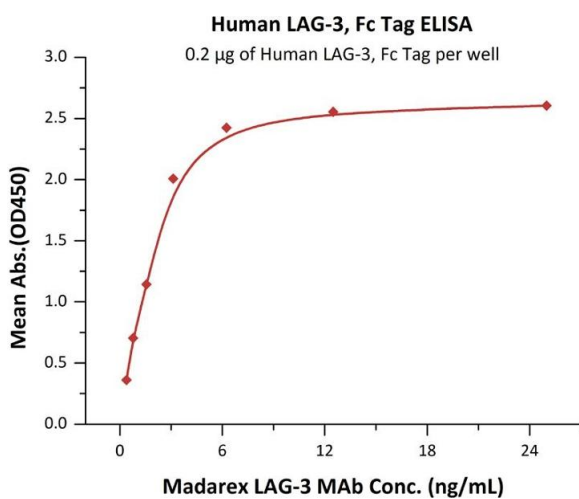
**Format:** Lyophilized

**Buffer:** Tris with Glycine, Arginine and NaCl, pH 7.5

**Handling Advice:** Please avoid repeated freeze-thaw cycles.

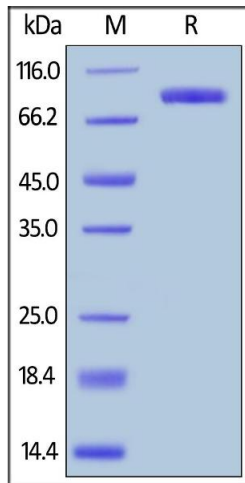
**Storage:** -20 °C

## Images



### ELISA

**Image 1.** Immobilized Human LAG-3, Fc Tag (ABIN5526624, ABIN5526625) at 2 µg/mL (100 µL/well) can bind Madarex LAG-3 MAb with a linear range of 0.4-3 ng/mL (QC tested).



### SDS-PAGE

**Image 2.** Human LAG-3, Fc Tag on under reducing (R) condition. The gel was stained overnight with Coomassie Blue. The purity of the protein is greater than 95 % .