

Datasheet for ABIN5526670

LILRB5 Protein (AA 24-458) (His tag)[Go to Product page](#)**1** Image

Overview

Quantity:	100 µg
Target:	LILRB5
Protein Characteristics:	AA 24-458
Origin:	Human
Source:	HEK-293 Cells
Protein Type:	Recombinant
Purification tag / Conjugate:	This LILRB5 protein is labelled with His tag.

Product Details

Sequence:	AA 24-458
Characteristics:	This protein carries a polyhistidine tag at the C-terminus. The protein has a calculated MW of 49.2 kDa. The protein migrates as 66-68 kDa under reducing (R) condition (SDS-PAGE) due to glycosylation.
Purity:	>95 % as determined by SDS-PAGE.
Endotoxin Level:	Less than 1.0 EU per µg by the LAL method.

Target Details

Target:	LILRB5
Alternative Name:	LILRB5 (LILRB5 Products)
Background:	Leukocyte immunoglobulin-like receptor subfamily B member 5 (LILRB5), also known as CD85c and LIR-8, belongs to the leukocyte immunoglobulin-like receptor (LIR) family of

Target Details

transmembrane glycoproteins that negatively regulate immune cell activation. Several other LIR subfamily B receptors are expressed on immune cells where they bind to MHC class I molecules on antigen-presenting cells and inhibit stimulation of an immune response.

Molecular Weight: 49.2 kDa

NCBI Accession: [NP_006831](#)

Application Details

Restrictions: For Research Use only

Handling

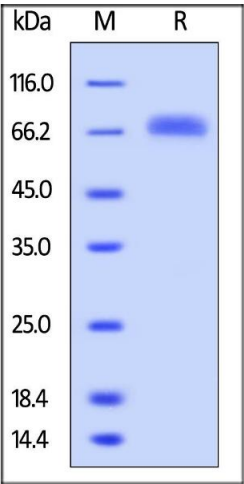
Format: Lyophilized

Buffer: PBS, pH 7.4

Handling Advice: Please avoid repeated freeze-thaw cycles.

Storage: -20 °C

Images



SDS-PAGE

Image 1. Human LILRB5, His Tag on under reducing (R) condition. The gel was stained overnight with Coomassie Blue. The purity of the protein is greater than 95 % .