



[Go to Product page](#)

Datasheet for ABIN5526685  
**Pro-Cathepsin B ELISA Kit**

1 Image

### Overview

Quantity:	96 tests
Target:	Pro-Cathepsin B
Reactivity:	Human
Method Type:	Sandwich ELISA
Detection Range:	61 pg/mL-15 ng/mL
Minimum Detection Limit:	61 ng/mL
Application:	ELISA

### Product Details

Purpose:	Human Pro-Cathepsin B ELISA Kit for Serum, Plasma, and Cell Culture Supernatants.
Sample Type:	Plasma, Cell Culture Supernatant, Serum
Analytical Method:	Quantitative
Detection Method:	Colorimetric
Specificity:	This ELISA antibody pair recognizes Human Pro-Cathepsin B.
Sensitivity:	61 pg/mL
Characteristics:	<ul style="list-style-type: none"><li>• Strip plates and additional reagents allow for use in multiple experiments</li><li>• Quantitative protein detection</li><li>• Establishes normal range</li><li>• The best products for confirmation of antibody array data</li></ul>
Components:	<ul style="list-style-type: none"><li>• Pre-Coated 96-well Strip Microplate</li></ul>

## Product Details

---

- Wash Buffer
- Stop Solution
- Assay Diluent(s)
- Lyophilized Standard
- Biotinylated Detection Antibody
- Streptavidin-Conjugated HRP
- TMB One-Step Substrate

---

### Material not included:

- Distilled or deionized water
- Precision pipettes to deliver 2 µL to 1 µL volumes
- Adjustable 1-25 µL pipettes for reagent preparation
- 100 µL and 1 liter graduated cylinders
- Tubes to prepare standard and sample dilutions
- Absorbent paper
- Microplate reader capable of measuring absorbance at 450nm
- Log-log graph paper or computer and software for ELISA data analysis

## Target Details

---

Target:	Pro-Cathepsin B
Abstract:	<a href="#">Pro-Cathepsin B Products</a>
Gene ID:	1508
UniProt:	<a href="#">P07858</a>

## Application Details

---

Application Notes:	Optimal working dilution should be determined by the investigator.
Plate:	Pre-coated
Protocol:	<ol style="list-style-type: none"><li>1. Prepare all reagents, samples and standards as instructed in the manual.</li><li>2. Add 100 µL of standard or sample to each well.</li><li>3. Incubate 2.5 h at RT or O/N at 4 °C.</li><li>4. Add 100 µL of prepared biotin antibody to each well.</li><li>5. Incubate 1 h at RT.</li><li>6. Add 100 µL of prepared Streptavidin solution to each well.</li><li>7. Incubate 45 min at RT.</li><li>8. Add 100 µL of TMB One-Step Substrate Reagent to each well.</li><li>9. Incubate 30 min at RT.</li><li>10. Add 50 µL of Stop Solution to each well.</li><li>11. Read at 450 nm immediately.</li></ol>

## Application Details

Reagent Preparation: Recommended Dilution for serum and plasma samples 4 fold

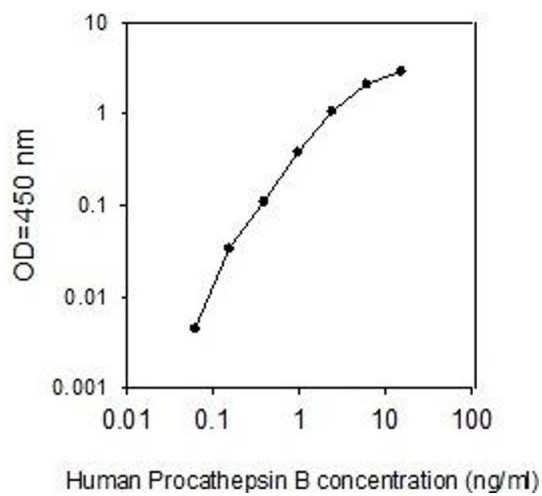
Restrictions: For Research Use only

## Handling

Storage: -20 °C

Expiry Date: 6 months

## Images



### ELISA

**Image 1.** Standard Curve