



[Go to Product page](#)

Datasheet for ABIN5526814

## TYRO3 ELISA Kit

### 1 Image

#### Overview

Quantity:	96 tests
Target:	TYRO3
Reactivity:	Mouse
Method Type:	Sandwich ELISA
Detection Range:	125-8000 pg/mL
Minimum Detection Limit:	125 pg/mL
Application:	ELISA

#### Product Details

Purpose:	Sandwich ELISA for quantitative detection of Mouse TYRO3 concentrations.
Sample Type:	Plasma, Cell Lysate, Cell Culture Supernatant, Serum, Tissue Homogenate
Analytical Method:	Quantitative
Detection Method:	Colorimetric
Sensitivity:	60 pg/mL

#### Target Details

Target:	TYRO3
Alternative Name:	TYRO3 ( <a href="#">TYRO3 Products</a> )
Background:	BYK, DTK, RSE, SKY, TIF, Tyrosine-protein kinase receptor TYRO3, Tyrosine-protein kinase BYK, Tyrosine-protein kinase DTK, Tyrosine-protein kinase RSE, Tyrosine-protein kinase SKY,

## Target Details

Tyrosine-protein kinase TIF

Gene ID: 22174

UniProt: [P55144](#)

Pathways: [RTK Signaling](#)

## Application Details

Plate: Pre-coated

Restrictions: For Research Use only

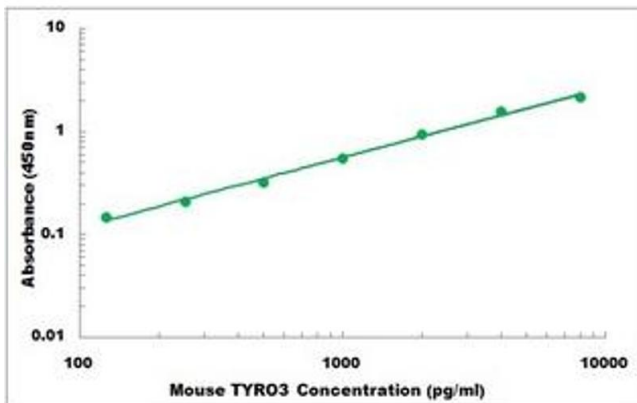
## Handling

Storage: 4 °C,-20 °C

Storage Comment: Shipped and store at 4°C for 6 months, store at -20°C for one year.  
Avoid freeze/thaw cycles.

Expiry Date: 12 months

## Images



### ELISA

**Image 1.** Representative Standard Curve