



[Go to Product page](#)

Datasheet for ABIN5526818

Sclerostin ELISA Kit

1 Image

Overview

Quantity:	96 tests
Target:	Sclerostin (SOST)
Reactivity:	Human
Method Type:	Sandwich ELISA
Detection Range:	31.2-2000 pg/mL
Minimum Detection Limit:	31.2 pg/mL
Application:	ELISA

Product Details

Purpose:	Sandwich ELISA for quantitative detection of Human Sclerostin concentrations.
Sample Type:	Plasma, Cell Lysate, Cell Culture Supernatant, Serum, Tissue Homogenate
Analytical Method:	Quantitative
Detection Method:	Colorimetric
Sensitivity:	15 pg/mL

Target Details

Target:	Sclerostin (SOST)
Alternative Name:	Sclerostin (SOST Products)
Background:	Sclerostin
Gene ID:	50964

Target Details

UniProt: [Q9BQB4](#)

Application Details

Plate: Pre-coated

Restrictions: For Research Use only

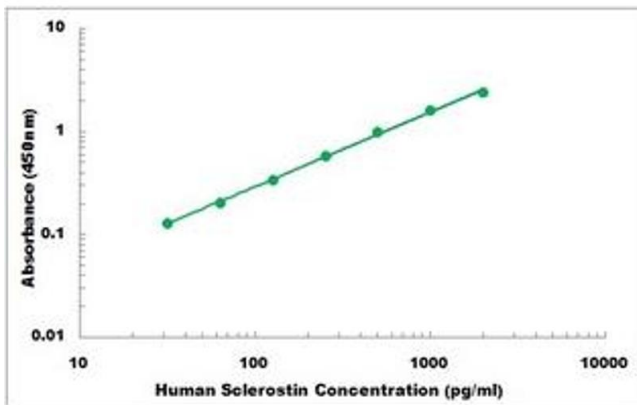
Handling

Storage: 4 °C,-20 °C

Storage Comment: Shipped and store at 4°C for 6 months, store at -20°C for one year.
Avoid freeze/thaw cycles.

Expiry Date: 12 months

Images



ELISA

Image 1. Representative Standard Curve