



[Go to Product page](#)

Datasheet for ABIN5526859

beta Catenin ELISA Kit

1 Image

Overview

Quantity:	96 tests
Target:	beta Catenin (CATNB)
Reactivity:	Human
Method Type:	Sandwich ELISA
Detection Range:	312-20000 pg/mL
Minimum Detection Limit:	312 pg/mL
Application:	ELISA

Product Details

Purpose:	Sandwich ELISA for quantitative detection of Human Beta-catenin concentrations.
Sample Type:	Plasma, Cell Culture Supernatant, Serum, Tissue Homogenate
Analytical Method:	Quantitative
Detection Method:	Colorimetric
Sensitivity:	156 pg/mL

Target Details

Target:	beta Catenin (CATNB)
Alternative Name:	Beta-catenin (CATNB Products)
Background:	CTNNB, Catenin beta-1, Beta-catenin
Gene ID:	1499

Target Details

UniProt: [P35222](#)

Pathways: [Peptide Hormone Metabolism](#)

Application Details

Plate: Pre-coated

Restrictions: For Research Use only

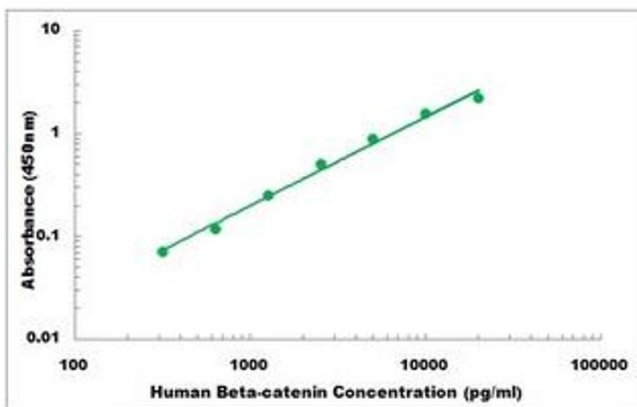
Handling

Storage: 4 °C, -20 °C

Storage Comment: Shipped and store at 4°C for 6 months, store at -20°C for one year.
Avoid freeze/thaw cycles.

Expiry Date: 12 months

Images



ELISA

Image 1. Representative Standard Curve