



Datasheet for ABIN5526860

Ki-67 ELISA Kit



[Go to Product page](#)

1 Image

Overview

Quantity:	96 tests
Target:	Ki-67 (MKI67)
Reactivity:	Human
Method Type:	Sandwich ELISA
Detection Range:	6.25-400 pg/mL
Minimum Detection Limit:	6.25 pg/mL
Application:	ELISA

Product Details

Purpose:	Sandwich ELISA for quantitative detection of Human Ki67 concentrations.
Sample Type:	Plasma, Cell Lysate, Cell Culture Supernatant, Serum, Tissue Homogenate
Analytical Method:	Quantitative
Detection Method:	Colorimetric
Sensitivity:	3 pg/mL

Target Details

Target:	Ki-67 (MKI67)
Alternative Name:	Ki67 (MKI67 Products)
Background:	Antigen KI-67
Gene ID:	4288

Target Details

UniProt: [P46013](#)

Pathways: [Glycosaminoglycan Metabolic Process](#)

Application Details

Plate: Pre-coated

Restrictions: For Research Use only

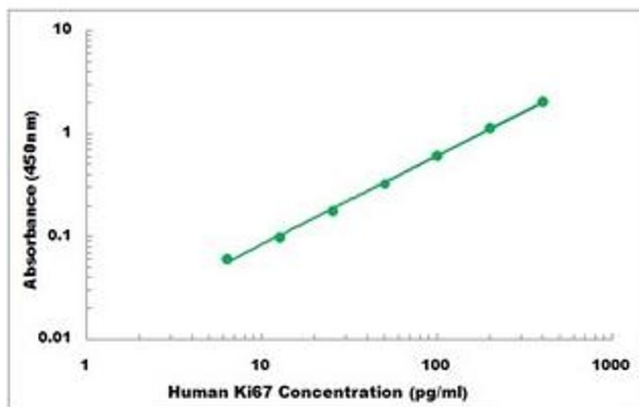
Handling

Storage: 4 °C, -20 °C

Storage Comment: Shipped and store at 4°C for 6 months, store at -20°C for one year.
Avoid freeze/thaw cycles.

Expiry Date: 12 months

Images



ELISA

Image 1. Representative Standard Curve