



[Go to Product page](#)

Datasheet for ABIN5526874

Notch1 ELISA Kit

1 Image

Overview

Quantity:	96 tests
Target:	Notch1 (NOTCH1)
Reactivity:	Human
Method Type:	Sandwich ELISA
Detection Range:	78-5000 pg/mL
Minimum Detection Limit:	78 pg/mL
Application:	ELISA

Product Details

Purpose:	Sandwich ELISA for quantitative detection of Human NOTCH1 concentrations.
Sample Type:	Plasma, Cell Lysate, Cell Culture Supernatant, Serum, Tissue Homogenate
Analytical Method:	Quantitative
Detection Method:	Colorimetric
Sensitivity:	40 pg/mL

Target Details

Target:	Notch1 (NOTCH1)
Alternative Name:	NOTCH1 (NOTCH1 Products)
Background:	TAN1, Neurogenic locus notch homolog protein 1, Notch 1, hN1, Translocation-associated notch protein TAN-1

Target Details

Gene ID: 4851

UniProt: [P46531](#)

Pathways: [Notch Signaling](#), [Stem Cell Maintenance](#), [Regulation of Muscle Cell Differentiation](#), [Tube Formation](#), [Skeletal Muscle Fiber Development](#)

Application Details

Plate: Pre-coated

Restrictions: For Research Use only

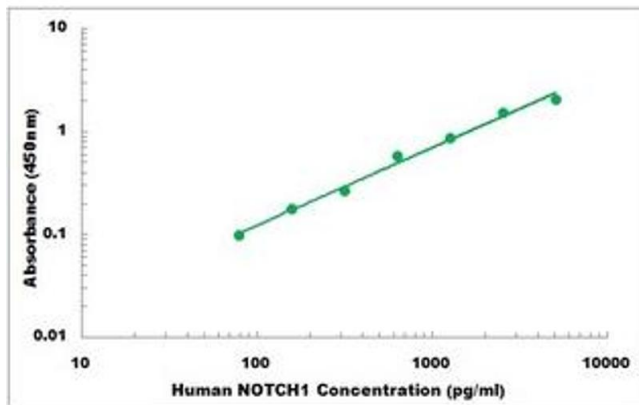
Handling

Storage: 4 °C, -20 °C

Storage Comment: Shipped and store at 4°C for 6 months, store at -20°C for one year.
Avoid freeze/thaw cycles.

Expiry Date: 12 months

Images



ELISA

Image 1. Representative Standard Curve