

Datasheet for ABIN5526889  
**anti-IL2 Receptor beta antibody**

## 3 Images

[Go to Product page](#)

## Overview

Quantity:	0.1 mg
Target:	IL2 Receptor beta (IL2RB)
Reactivity:	Human
Host:	Mouse
Clonality:	Monoclonal
Conjugate:	This IL2 Receptor beta antibody is un-conjugated
Application:	Flow Cytometry (FACS), Immunoprecipitation (IP)

## Product Details

Immunogen:	TL-Mor cell line
Clone:	TU27
Isotype:	IgG1 kappa
Specificity:	The mouse monoclonal antibody TU27 recognizes an extracellular epitope of CD122 (IL-2R beta), a 70-75 kDa type I transmembrane glycoprotein constitutively expressed by NK cells and a T cell subset, and upregulated upon activation.
Cross-Reactivity (Details):	Human
Purification:	Purified by protein-A affinity chromatography.
Purity:	> 95 % (by SDS-PAGE)

## Target Details

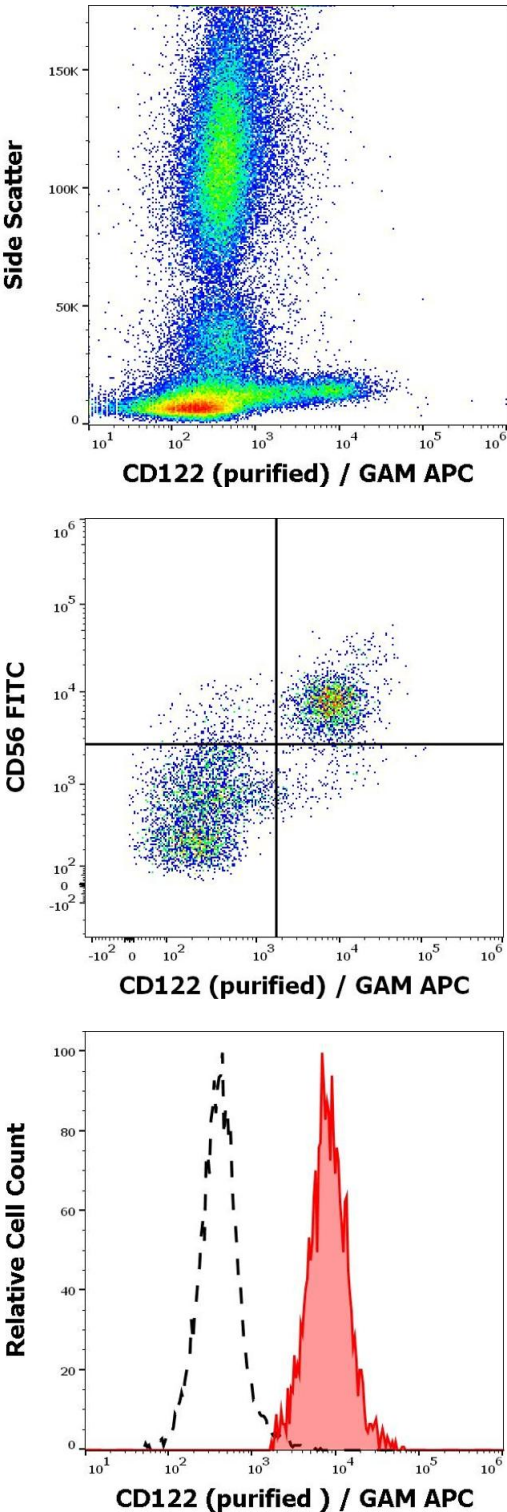
Target:	IL2 Receptor beta (IL2RB)
Alternative Name:	CD122 ( <a href="#">IL2RB Products</a> )
Background:	Interleukin 2 receptor subunit beta,CD122 (IL-2/IL-15R beta) constitutes together with CD132 (common gamma chain) and with CD25 (IL-2/IL15R alpha) the intermediate (CD122+CD132) and the high affinity (CD122+CD132+CD25) IL-2 and IL-15 receptor complex. CD122 is expressed on NK cells and lymphocytes, but at low level, unless the cell is activated. The cytoplasmic part of CD122 binds to Src-family and Jak-family kinases. The biological effect of CD122 ligation depends on whether IL-2 or IL-15 is bound to the receptor complex.,IL2RB, IL15RB, P70-75
Gene ID:	3560
UniProt:	<a href="#">P14784</a>
Pathways:	<a href="#">JAK-STAT Signaling</a> , <a href="#">Growth Factor Binding</a>

## Application Details

Application Notes:	Flow cytometry: Recommended dilution: 1-4 µg/mL.
Restrictions:	For Research Use only

## Handling

Concentration:	1 mg/mL
Buffer:	Phosphate buffered saline (PBS), pH 7.4, 15 mM sodium azide
Preservative:	Sodium azide
Precaution of Use:	This product contains Sodium azide: a POISONOUS AND HAZARDOUS SUBSTANCE which should be handled by trained staff only.
Storage:	4 °C
Storage Comment:	Store at 2-8°C. Do not freeze.



### Flow Cytometry

**Image 1.** Flow cytometry surface staining pattern of human peripheral whole blood stained using anti-human CD122 (TU27) purified antibody (concentration in sample 4 µg/mL) GAM APC.

### Flow Cytometry

**Image 2.** Flow cytometry multicolor surface staining of human CD3 negative lymphocytes stained using anti-human CD122 (TU27) purified antibody (concentration in sample 4 µg/mL, GAM APC) and anti-human CD56 (LT56) PE antibody (10 µL reagent / 100 µL of peripheral whole blood).

### Flow Cytometry

**Image 3.** Separation of human CD122 positive CD56 positive CD3 negative NK cells (red-filled) from neutrophil granulocytes (black-dashed) in flow cytometry analysis (surface staining) of human peripheral whole blood stained using anti-human CD122 (TU27) purified antibody (concentration in sample 4 µg/mL) GAM APC.