



[Go to Product page](#)

Datasheet for ABIN5526895
anti-PDCD1LG2 antibody

4 Images

Overview

Quantity:	0.1 mg
Target:	PDCD1LG2
Reactivity:	Human
Host:	Mouse
Clonality:	Monoclonal
Conjugate:	This PDCD1LG2 antibody is un-conjugated
Application:	Flow Cytometry (FACS), Immunohistochemistry (IHC)

Product Details

Immunogen:	human CD273 cDNA
Clone:	24F-10C12
Isotype:	IgG2a kappa
Specificity:	The mouse monoclonal antibody 24F.10C12 recognizes an extracellular epitope of CD273 / PD-L2 (also known as B7-DC), a 25 kDa type I transmembrane protein expressed by dendritic cells, activated monocytes and T cells, heart, first trimester placenta, lung and liver, as well as in Hodgkin's lymphoma cells and primary mediastinal B cell lymphoma (PMBL).
Cross-Reactivity (Details):	Human
Purification:	Purified by protein-A affinity chromatography.
Purity:	> 95 % (by SDS-PAGE)

Target Details

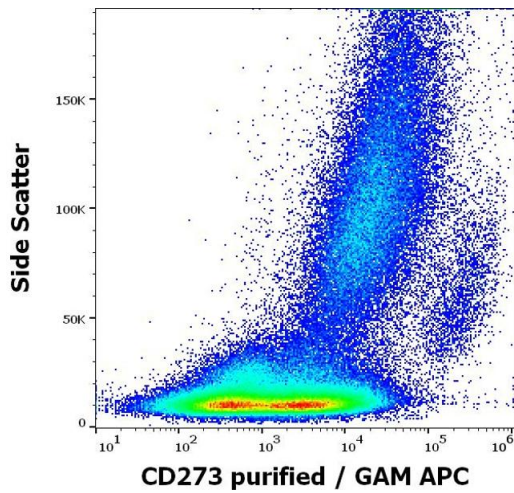
Target:	PDCD1LG2
Alternative Name:	CD273 / PD-L2 (PDCD1LG2 Products)
Background:	Programmed cell death 1 ligand 2,CD273 / PD-L2 (programmed death ligand-1), also known as B7-DC, is a member of the B7 family of regulatory proteins. It costimulates the proliferation of T cells, and mediates IFN gamma production. Ligation of CD273 on dendritic cells enhances dendritic cell activation and T cell responses. When interacting with CD279, it can act as a coinhibitor of the T cell function. CD273 expression is a useful marker to distinguish primary mediastinal B cell lymphoma from other diffuse large B cell lymphomas.,PDCD1LG2, B7DC, Btdc, PDL2, PDCD1L2, bA574F11.2, Butyrophilin, B7-DC,
Gene ID:	80380
UniProt:	Q9BQ51

Application Details

Application Notes:	Flow cytometry: Recommended dilution: 1-4 µg/mL
Restrictions:	For Research Use only

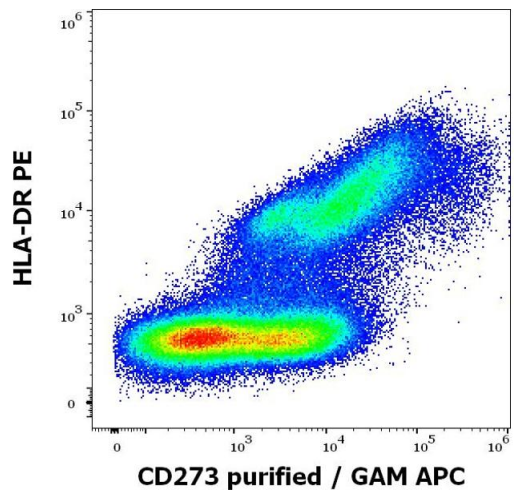
Handling

Concentration:	1 mg/mL
Buffer:	Phosphate buffered saline (PBS), pH 7.4, 15 mM sodium azide
Preservative:	Sodium azide
Precaution of Use:	This product contains Sodium azide: a POISONOUS AND HAZARDOUS SUBSTANCE which should be handled by trained staff only.
Storage:	4 °C
Storage Comment:	Store at 2-8°C. Do not freeze.



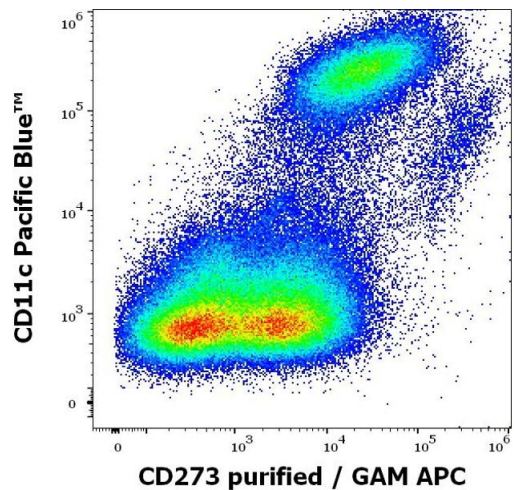
Flow Cytometry

Image 1. Flow cytometry surface staining pattern of human stimulated (GM-CSF + IL-4) monocytes stained using anti-human CD273 (24F.10C12) purified antibody (concentration in sample 0.6 µg/mL) GAM APC.



Flow Cytometry

Image 2. Flow cytometry multicolor surface staining pattern of human stimulated (GM-CSF + IL-4) monocytes using anti-human HLA-DR (L243) PE antibody (10 µL reagent / 100 µL of peripheral whole blood) and anti-human CD273 (24F.10C12) purified antibody (concentration in sample 0.6 µg/mL) GAM APC.



Flow Cytometry

Image 3. Flow cytometry multicolor surface staining pattern of human stimulated (GM-CSF + IL-4) monocytes using anti-human CD11c (BU15) Pacific Blue antibody (20 µL reagent / 100 µL of peripheral whole blood) and anti-human CD273 (24F.10C12) purified antibody (concentration in sample 0.6 µg/mL) GAM APC.

Please check the [product details page](#) for more images. Overall 4 images are available for ABIN5526895.