

Datasheet for ABIN5526900

**anti-NG2 antibody (PE)**[Go to Product page](#)**1** Image

## Overview

Quantity:	100 tests
Target:	NG2 (MCSP)
Reactivity:	Human
Host:	Mouse
Clonality:	Monoclonal
Conjugate:	This NG2 antibody is conjugated to PE
Application:	Flow Cytometry (FACS)

## Product Details

Immunogen:	Human bone marrow stromal cells infected with SV-40
Clone:	7-1
Isotype:	IgG1
Specificity:	The mouse monoclonal antibody 7.1 recognizes an extracellular epitope of NG2, the melanoma-associated chondroitin sulfate proteoglycan 4 of Mw approximately 220-300 kDa.
Cross-Reactivity (Details):	Human
Purification:	Purified antibody is conjugated with R-phycoerythrin (PE) under optimum conditions. Unconjugated antibody and free fluorochrome are removed by size-exclusion chromatography.

## Target Details

Target:	NG2 (MCSP)
---------	------------

## Target Details

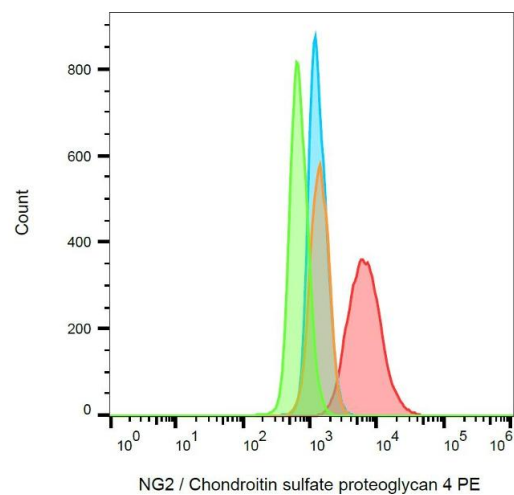
Alternative Name:	NG2 / Chondroitin sulfate proteoglycan 4 ( <a href="#">MCSP Products</a> )
Background:	Chondroitin sulfate proteoglycan 4,NG2 / chondroitin sulfate proteoglycan 4 is expressed on glial cell populations, but not on normal hepatopoietic cells. It is an integral membrane chondroitin sulfate proteoglycan expressed by human malignant melanoma cells, where it plays role in stabilizing cell-substratum interactions during early events of melanoma cell spreading on endothelial basement membranes, and supports signaling pathways important for tumor invasion and growth. NG2 also serves as an AML blast tumor marker associated with poor prognosis.,Chondroitin sulfate proteoglycan 4, MSK16, CSPG4, MCSP
Gene ID:	1464
UniProt:	<a href="#">Q6UVK1</a>
Pathways:	<a href="#">Glycosaminoglycan Metabolic Process</a>

## Application Details

Application Notes:	Flow cytometry: The reagent is designed for analysis of human blood cells using 10 µL reagent / 100 µL of whole blood or 10 <sup>6</sup> cells in a suspension. The content of a vial (1 ml) is sufficient for 100 tests.
Comment:	The purified antibody is conjugated with R-Phycoerythrin (PE) under optimum conditions. The conjugate is purified by size-exclusion chromatography and adjusted for direct use. No reconstitution is necessary.
Restrictions:	For Research Use only

## Handling

Buffer:	Stabilizing phosphate buffered saline (PBS), pH 7.4, 15 mM sodium azide
Preservative:	Sodium azide
Precaution of Use:	This product contains Sodium azide: a POISONOUS AND HAZARDOUS SUBSTANCE which should be handled by trained staff only.
Storage:	4 °C
Storage Comment:	Store at 2-8°C. Protect from prolonged exposure to light. Do not freeze.



Flow Cytometry

**Image 1.** Flow cytometry analysis (surface staining) of SK-MEL-30 cells with anti-NG2 (7.1) PE (red, blank orange), and SP2 cells (negative, blue, blank green).