

Datasheet for ABIN5530175
anti-Helical Factor antibody (C-Term)[Go to Product page](#)

2 Images

Overview

Quantity:	400 µL
Target:	Helical Factor (HF)
Binding Specificity:	AA 135-164, C-Term
Reactivity:	Mouse, Rat
Host:	Rabbit
Clonality:	Polyclonal
Conjugate:	This Helical Factor antibody is un-conjugated
Application:	Western Blotting (WB), Immunohistochemistry (Paraffin-embedded Sections) (IHC (p))

Product Details

Immunogen:	This Mouse DHFR antibody is generated from rabbits immunized with a KLH conjugated synthetic peptide between 135-164 amino acids from the C-terminal region of mouse DHFR.
Isotype:	Ig Fraction
Purification:	This antibody is prepared by Saturated Ammonium Sulfate (SAS) precipitation followed by dialysis

Target Details

Target:	Helical Factor (HF)
Alternative Name:	DHF (HF Products)
Background:	Dihydrofolate reductase converts dihydrofolate into tetrahydrofolate, a methyl group shuttle required for the de novo synthesis of purines, thymidylc acid, and certain amino acids. While

Target Details

the functional dihydrofolate reductase gene has been mapped to chromosome 5, multiple intronless processed pseudogenes or dihydrofolate reductase-like genes have been identified on separate chromosomes. Dihydrofolate reductase deficiency has been linked to megaloblastic anemia.

Molecular Weight: 22 kDa

Gene ID: 13361

UniProt: [P00375](#)

Application Details

Application Notes: For WB starting dilution is: 1:2000

For IHC-P starting dilution is: 1:50~100

Restrictions: For Research Use only

Handling

Format: Liquid

Concentration: 2 mg/mL

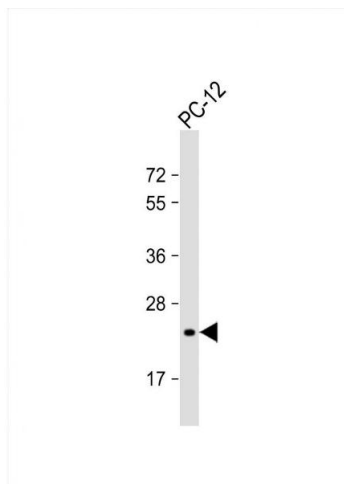
Buffer: Supplied in PBS with 0.09 % (W/V) sodium azide.

Preservative: Sodium azide

Precaution of Use: This product contains Sodium azide: a POISONOUS AND HAZARDOUS SUBSTANCE which should be handled by trained staff only.

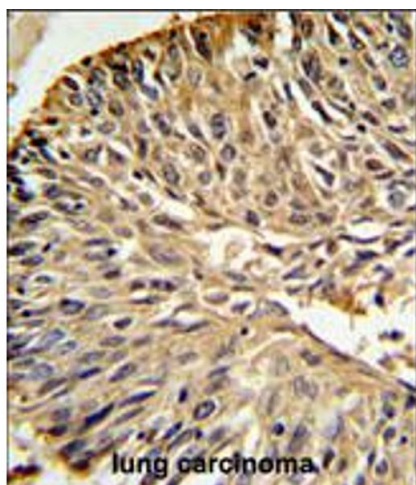
Storage: 4 °C, -20 °C

Storage Comment: Store at 4°C for three months and -20°C, stable for up to one year. As with all antibodies care should be taken to avoid repeated freeze thaw cycles. Antibodies should not be exposed to prolonged high temperatures.



Western Blotting

Image 1. Western Blot at 1:2000 dilution + PC-12 whole cell lysate Lysates/proteins at 20 ug per lane.



Immunohistochemistry

Image 2. DHFR Antibody IHC analysis in formalin fixed and paraffin embedded human lung carcinoma followed by peroxidase conjugation of the secondary antibody and DAB staining.