

Datasheet for ABIN5530187

anti-Membrane transport protein XK (XK) (AA 83-111), (N-Term) antibody



[Go to Product page](#)

1 Image

Overview

Quantity:	400 µL
Target:	Membrane transport protein XK (XK)
Binding Specificity:	AA 83-111, N-Term
Reactivity:	Human
Host:	Rabbit
Clonality:	Polyclonal
Conjugate:	Un-conjugated
Application:	Western Blotting (WB)

Product Details

Immunogen:	This XK antibody is generated from rabbits immunized with a KLH conjugated synthetic peptide between 83-111 amino acids from the N-terminal region of human XK.
Isotype:	Ig Fraction
Purification:	This antibody is purified through a protein A column, followed by peptide affinity purification.

Target Details

Target:	Membrane transport protein XK (XK)
Alternative Name:	XK (XK Products)
Background:	This locus controls the synthesis of the Kell blood group 'precursor substance' (Kx). Mutations in this gene have been associated with McLeod syndrome, an X-linked, recessive disorder characterized by abnormalities in the neuromuscular and hematopoietic systems. The encoded

Target Details

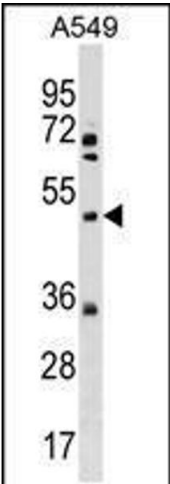
	protein has structural characteristics of prokaryotic and eukaryotic membrane transport proteins.
Molecular Weight:	51 kDa
Gene ID:	7504
UniProt:	P51811

Application Details

Application Notes:	For WB starting dilution is: 1:1000
Restrictions:	For Research Use only

Handling

Format:	Liquid
Concentration:	0.5 mg/mL
Buffer:	Supplied in PBS with 0.09 % (W/V) sodium azide.
Preservative:	Sodium azide
Precaution of Use:	This product contains Sodium azide: a POISONOUS AND HAZARDOUS SUBSTANCE which should be handled by trained staff only.
Storage:	4 °C,-20 °C
Storage Comment:	Store at 4°C for three months and -20°C, stable for up to one year. As with all antibodies care should be taken to avoid repeated freeze thaw cycles. Antibodies should not be exposed to prolonged high temperatures.



Western Blotting

Image 1. Western blot analysis in A549 cell line lysates (35ug/lane).This demonstrates the XK antibody detected the XK protein (arrow).