

Datasheet for ABIN5530212
anti-RBM22 antibody (AA 165-193)[Go to Product page](#)

3 Images

Overview

Quantity:	400 µL
Target:	RBM22
Binding Specificity:	AA 165-193
Reactivity:	Human
Host:	Rabbit
Clonality:	Polyclonal
Conjugate:	This RBM22 antibody is un-conjugated
Application:	Western Blotting (WB), Immunohistochemistry (Paraffin-embedded Sections) (IHC (p))

Product Details

Immunogen:	This RBM22 antibody is generated from rabbits immunized with a KLH conjugated synthetic peptide between 165-193 amino acids from the Central region of human RBM22.
Isotype:	Ig Fraction
Purification:	This antibody is purified through a protein A column, followed by peptide affinity purification.

Target Details

Target:	RBM22
Alternative Name:	RBM22 (RBM22 Products)
Background:	This gene encodes an RNA binding protein. The encoded protein may play a role in cell division and may be involved in pre-mRNA splicing. Related pseudogenes exist on chromosomes 6, 7, 9, 13, 16, 18, and X.

Target Details

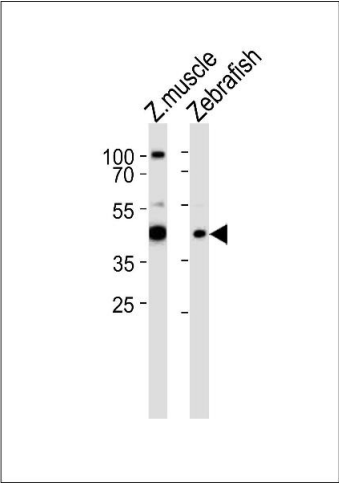
Molecular Weight:	47 kDa
Gene ID:	55696
UniProt:	Q9NW64
Pathways:	Protein targeting to Nucleus

Application Details

Application Notes:	For WB starting dilution is: 1:1000
	For IHC-P starting dilution is: 1:10~50
Restrictions:	For Research Use only

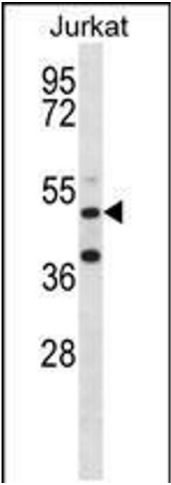
Handling

Format:	Liquid
Concentration:	0.38 mg/mL
Buffer:	Supplied in PBS with 0.09 % (W/V) sodium azide.
Preservative:	Sodium azide
Precaution of Use:	This product contains Sodium azide: a POISONOUS AND HAZARDOUS SUBSTANCE which should be handled by trained staff only.
Storage:	4 °C, -20 °C
Storage Comment:	Store at 4°C for three months and -20°C, stable for up to one year. As with all antibodies care should be taken to avoid repeated freeze thaw cycles. Antibodies should not be exposed to prolonged high temperatures.



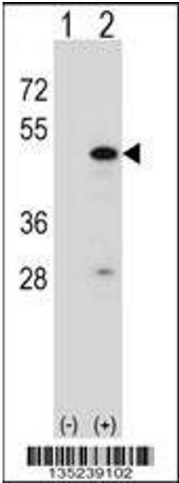
Western Blotting

Image 1. Western blot analysis of lysates from zebra fish muscle, Zebrafish tissue lysate (from left to right), using RBM22 Antibody at 1:1000 at each lane.



Western Blotting

Image 2. Western blot analysis in Jurkat cell line lysates (35ug/lane).



Western Blotting

Image 3. Western blot analysis of RBM22 using rabbit polyclonal RBM22 Antibody using 293 cell lysates (2 ug/lane) either nontransfected (Lane 1) or transiently transfected (Lane 2) with the RBM22 gene.