

Datasheet for ABIN5530328

anti-Aurora Kinase B antibody (AA 283-313)[Go to Product page](#)**3** Images

Overview

Quantity:	400 µL
Target:	Aurora Kinase B (AURKB)
Binding Specificity:	AA 283-313
Reactivity:	Human, Mouse
Host:	Rabbit
Clonality:	Polyclonal
Conjugate:	This Aurora Kinase B antibody is un-conjugated
Application:	Western Blotting (WB), Immunohistochemistry (Paraffin-embedded Sections) (IHC (p))

Product Details

Immunogen:	This Aurora-B (ARK/STK12) antibody is generated from rabbits immunized with a KLH conjugated synthetic peptide between 283-313 amino acids from the Central region of human Aurora-B (ARK/STK12).
Isotype:	Ig Fraction
Purification:	This antibody is prepared by Saturated Ammonium Sulfate (SAS) precipitation followed by dialysis

Target Details

Target:	Aurora Kinase B (AURKB)
Alternative Name:	Aurora-B (AURKB Products)
Background:	Chromosomal segregation during mitosis as well as meiosis is regulated by kinases and

Target Details

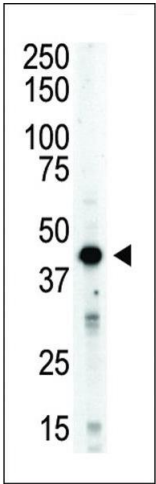
	phosphatases. The Aurora kinases associate with microtubules during chromosome movement and segregation. STK12 (Aurora kinase B) localizes to microtubules near kinetochores, specifically to the specialized microtubules called K-fibers, and Aurora kinase A localizes to centrosomes
Molecular Weight:	39 kDa
Gene ID:	9212
UniProt:	Q96GD4
Pathways:	TCR Signaling , Cell Division Cycle , Maintenance of Protein Location , Hepatitis C , Toll-Like Receptors Cascades

Application Details

Application Notes:	For WB starting dilution is: 1:1000 For IHC-P starting dilution is: 1:50~100
Restrictions:	For Research Use only

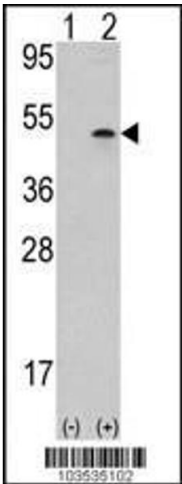
Handling

Format:	Liquid
Concentration:	2 mg/mL
Buffer:	Supplied in PBS with 0.09 % (W/V) sodium azide.
Preservative:	Sodium azide
Precaution of Use:	This product contains Sodium azide: a POISONOUS AND HAZARDOUS SUBSTANCE which should be handled by trained staff only.
Storage:	4 °C,-20 °C
Storage Comment:	Store at 4°C for three months and -20°C, stable for up to one year. As with all antibodies care should be taken to avoid repeated freeze thaw cycles. Antibodies should not be exposed to prolonged high temperatures.



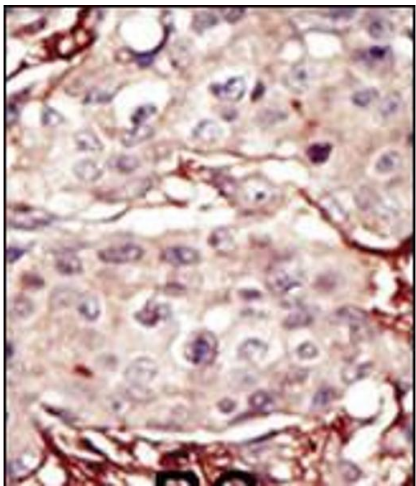
Western Blotting

Image 1. Antibody is used in Western blot to detect STK12 in mouse spleen tissue lysate.



Western Blotting

Image 2. Western blot analysis of AURKB using rabbit polyclonal Aurora-B (ARK/STK12) Antibody using 293 cell lysates (2 ug/lane) either nontransfected (Lane 1) or transiently transfected with the AURKB gene (Lane 2).



Immunohistochemistry

Image 3. Formalin-fixed and paraffin-embedded human cancer tissue reacted with the primary antibody, which was peroxidase-conjugated to the secondary antibody, followed by DAB staining. BC = breast carcinoma; HC = hepatocarcinoma.