



[Go to Product page](#)

Datasheet for ABIN5530337
anti-ATF5 antibody (C-Term)

2 Images

Overview

Quantity:	400 µL
Target:	ATF5
Binding Specificity:	AA 188-216, C-Term
Reactivity:	Human, Mouse
Host:	Rabbit
Clonality:	Polyclonal
Conjugate:	This ATF5 antibody is un-conjugated
Application:	Western Blotting (WB)

Product Details

Immunogen:	This ATF5 antibody is generated from rabbits immunized with a KLH conjugated synthetic peptide between 188-216 amino acids from the C-terminal region of human ATF5.
Isotype:	Ig Fraction
Purification:	This antibody is purified through a protein A column, followed by peptide affinity purification.

Target Details

Target:	ATF5
Alternative Name:	ATF5 (ATF5 Products)
Background:	Transcriptional activator which binds the cAMP response element (CRE) (consensus: 5'-GTGACGT[AC][AG]-3'), a sequence present in many viral and cellular promoters and blocks the differentiation of neuroprogenitor cells into neurons. Its transcriptional activity is enhanced by

Target Details

CCND3 and slightly inhibited by CDK4.

Molecular Weight: 31 kDa

Gene ID: 22809

UniProt: [Q9Y2D1](#)

Pathways: [Myometrial Relaxation and Contraction](#)

Application Details

Application Notes: For WB starting dilution is: 1:1000

Restrictions: For Research Use only

Handling

Format: Liquid

Concentration: 0.5 mg/mL

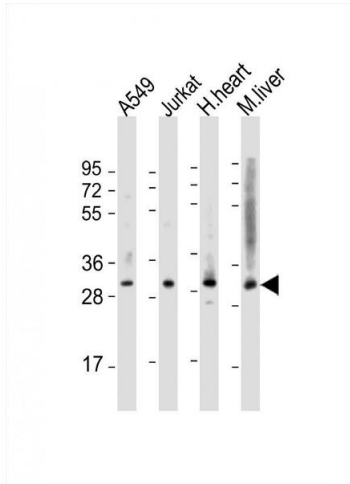
Buffer: Supplied in PBS with 0.09 % (W/V) sodium azide.

Preservative: Sodium azide

Precaution of Use: This product contains Sodium azide: a POISONOUS AND HAZARDOUS SUBSTANCE which should be handled by trained staff only.

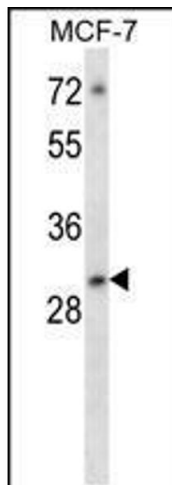
Storage: 4 °C,-20 °C

Storage Comment: Store at 4°C for three months and -20°C, stable for up to one year. As with all antibodies care should be taken to avoid repeated freeze thaw cycles. Antibodies should not be exposed to prolonged high temperatures.



Western Blotting

Image 1. Western Blot at 1:2000 dilution Lane 1: A549 whole cell lysate Lane 2: Jurkat whole cell lysate Lane 3: human heart lysate Lane 4: mouse liver lysate Lysates/proteins at 20 ug per lane.



Western Blotting

Image 2. Western blot analysis in MCF-7 cell line lysates (35ug/lane).