



[Go to Product page](#)

Datasheet for ABIN5530351

## anti-Alkaline Phosphatase antibody (AA 274-304)

### 3 Images

#### Overview

Quantity:	400 µL
Target:	Alkaline Phosphatase (ALP)
Binding Specificity:	AA 274-304
Reactivity:	Human
Host:	Rabbit
Clonality:	Polyclonal
Conjugate:	This Alkaline Phosphatase antibody is un-conjugated
Application:	Western Blotting (WB), Immunofluorescence (IF), Immunohistochemistry (Paraffin-embedded Sections) (IHC (p))

#### Product Details

Immunogen:	This Alkaline Phosphatase (ALPI) antibody is generated from rabbits immunized with a KLH conjugated synthetic peptide between 274-304 amino acids from the Central region of human Alkaline Phosphatase (ALPI).
Isotype:	Ig Fraction
Purification:	This antibody is purified through a protein A column, followed by peptide affinity purification.

#### Target Details

Target:	Alkaline Phosphatase (ALP)
Alternative Name:	Alkaline Phosphatase ( <a href="#">ALP Products</a> )
Background:	There are at least four distinct but related alkaline phosphatases: intestinal, placental, placental-

## Target Details

---

like, and liver/bone/kidney (tissue non-specific). The intestinal alkaline phosphatase gene encodes a digestive brush-border enzyme. This enzyme is upregulated during small intestinal epithelial cell differentiation.

Molecular Weight: 57 kDa

Gene ID: 248

UniProt: [P09923](#)

## Application Details

---

Application Notes: For WB starting dilution is: 1:1000

For IHC-P starting dilution is: 1:100

For IF starting dilution is: 1:100

Restrictions: For Research Use only

## Handling

---

Format: Liquid

Concentration: 0.5 mg/mL

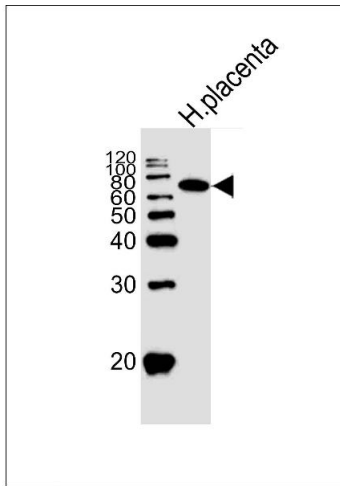
Buffer: Supplied in PBS with 0.09 % (W/V) sodium azide.

Preservative: Sodium azide

Precaution of Use: This product contains Sodium azide: a POISONOUS AND HAZARDOUS SUBSTANCE which should be handled by trained staff only.

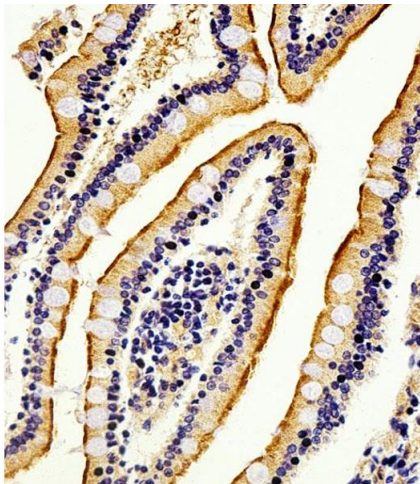
Storage: 4 °C, -20 °C

Storage Comment: Store at 4°C for three months and -20°C, stable for up to one year. As with all antibodies care should be taken to avoid repeated freeze thaw cycles. Antibodies should not be exposed to prolonged high temperatures.



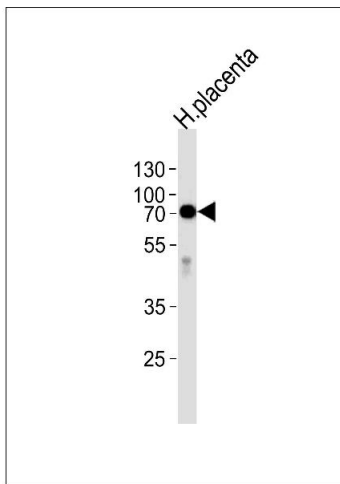
### Western Blotting

**Image 1.** Western blot analysis of lysate from human placenta tissue lysate, using ALPI Antibody at 1:1000.



### Immunohistochemistry

**Image 2.** Immunohistochemical analysis of paraffin-embedded H. small intestine section using Alkaline Phosphatase (ALPI) Antibody . Antibody was diluted at 1:100 dilution. A peroxidase-conjugated goat anti-rabbit IgG at 1:400 dilution was used as the secondary antibody, followed by DAB staining.



### Western Blotting

**Image 3.** Western blot analysis of lysate from human placenta tissue, using ALPI Antibody at 1:1000 at each lane