

Datasheet for ABIN5530353
anti-PLAP antibody (N-Term)



[Go to Product page](#)

3 Images

Overview

Quantity:	400 µL
Target:	PLAP (ALPP)
Binding Specificity:	AA 56-83, N-Term
Reactivity:	Human
Host:	Rabbit
Clonality:	Polyclonal
Conjugate:	This PLAP antibody is un-conjugated
Application:	Western Blotting (WB), Immunohistochemistry (Paraffin-embedded Sections) (IHC (p))

Product Details

Immunogen:	This ALPP antibody is generated from rabbits immunized with a KLH conjugated synthetic peptide between 56-83 amino acids from the N-terminal region of human ALPP.
Isotype:	Ig Fraction
Purification:	This antibody is purified through a protein A column, followed by peptide affinity purification.

Target Details

Target:	PLAP (ALPP)
Alternative Name:	ALPP (ALPP Products)
Background:	There are at least four distinct but related alkaline phosphatases: intestinal, placental, placental-like, and liver/bone/kidney (tissue non-specific). The first three are located together on chromosome 2 while the tissue non-specific form is located on chromosome 1. The product of

Target Details

this gene is a membrane bound glycosylated enzyme, also referred to as the heat stable form, that is expressed primarily in the placenta although it is closely related to the intestinal form of the enzyme as well as to the placental-like form. The coding sequence for this form of alkaline phosphatase is unique in that the 3' untranslated region contains multiple copies of an Alu family repeat. In addition, this gene is polymorphic and three common alleles (type 1, type 2 and type 3) for this form of alkaline phosphatase have been well characterized.

Molecular Weight:	58 kDa
-------------------	--------

Gene ID:	250
----------	-----

UniProt:	P05187
----------	------------------------

Application Details

Application Notes:	For WB starting dilution is: 1:1000
--------------------	-------------------------------------

	For IHC-P starting dilution is: 1:10~50
--	---

Restrictions:	For Research Use only
---------------	-----------------------

Handling

Format:	Liquid
---------	--------

Concentration:	0.5 mg/mL
----------------	-----------

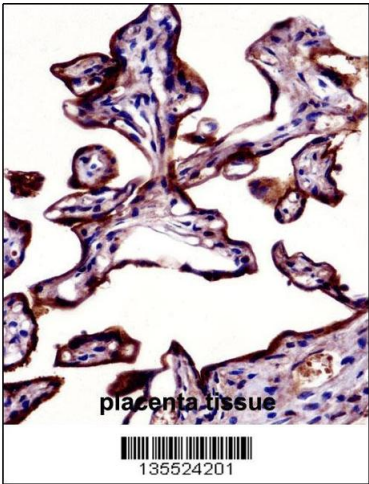
Buffer:	Supplied in PBS with 0.09 % (W/V) sodium azide.
---------	---

Preservative:	Sodium azide
---------------	--------------

Precaution of Use:	This product contains Sodium azide: a POISONOUS AND HAZARDOUS SUBSTANCE which should be handled by trained staff only.
--------------------	--

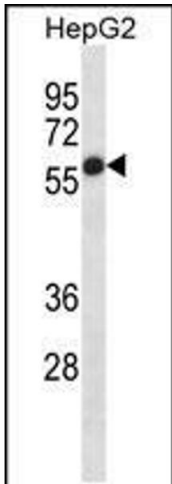
Storage:	4 °C,-20 °C
----------	-------------

Storage Comment:	Store at 4°C for three months and -20°C, stable for up to one year. As with all antibodies care should be taken to avoid repeated freeze thaw cycles. Antibodies should not be exposed to prolonged high temperatures.
------------------	--



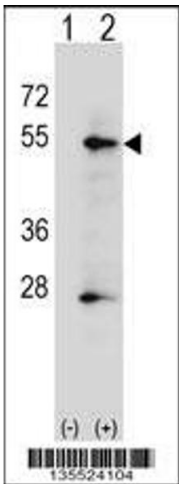
Immunohistochemistry

Image 1. ALPP Antibody immunohistochemistry analysis in formalin fixed and paraffin embedded human placenta tissue followed by peroxidase conjugation of the secondary antibody and DAB staining.



Western Blotting

Image 2. Western blot analysis in HepG2 cell line lysates (35ug/lane).



Western Blotting

Image 3. Western blot analysis of ALPP using rabbit polyclonal ALPP Antibody using 293 cell lysates (2 ug/lane) either nontransfected (Lane 1) or transiently transfected (Lane 2) with the ALPP gene.